



jordan fishwick

New Mills Road Hayfield High Peak



**New Mills Road Hayfield High Peak
SK22 2EU**

Reduced To £230,000



The Property

In the popular village of Hayfield and on the doorstep to Kinder Scout, a well presented stone mid terrace property. With two bedrooms and dining kitchen together with off road parking, a well stocked, generous private rear garden with stone utility room and storage area, and add garden shed , lawn and garden pond, pvc double glazing and gas central heating. Comprising: living room, fitted dining kitchen, two first floor bedrooms and a bathroom with white suite. Close to local amenities and the Sett Valley Trail with stunning open views to the rear. Viewing highly recommended.



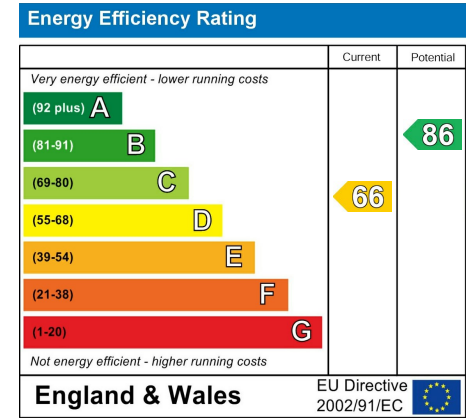
- Popular Hayfield Location
- Off Road Parking to Rear
- Stunning Rear Garden
- Well Presented Accommodation
- Two Bedrooms
- Dining Kitchen with Stable Door into Rear Garden
- stone utility room storage area, and garden shed
- Close to The Sett Valley Trail

Postcode SK22 2EU

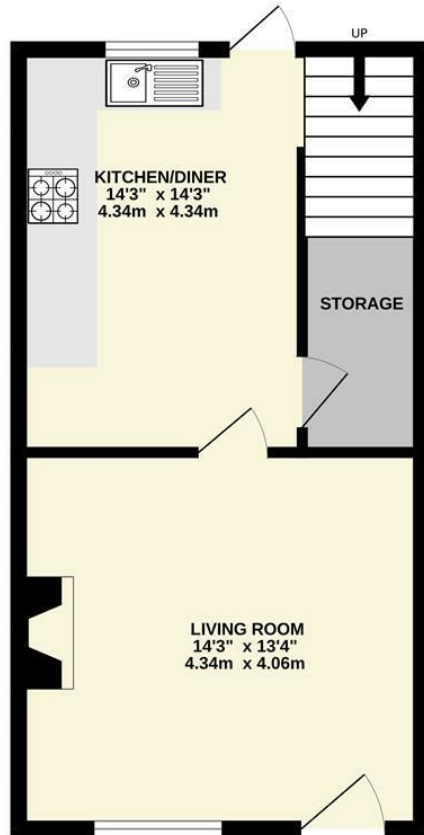
EPC Rating D

Local Authority High Peak

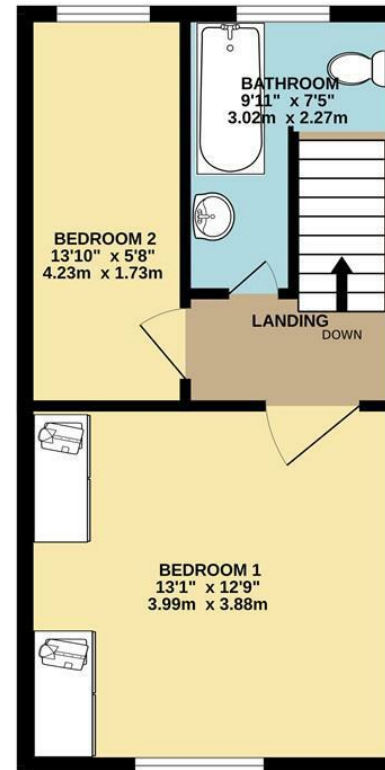
Council Tax B



GROUND FLOOR
386 sq.ft. (35.9 sq.m.) approx.



1ST FLOOR
348 sq.ft. (32.4 sq.m.) approx.



TOTAL FLOOR AREA: 734 sq.ft. (68.2 sq.m.) approx.

Whilst every attempt has been made to ensure the accuracy of the floorplan contained here, measurements of doors, windows, rooms and any other items are approximate and no responsibility is taken for any error, omission or mis-statement. This plan is for illustrative purposes only and should be used as such by any prospective purchaser. The services, systems and appliances shown have not been tested and no guarantee as to their operability or efficiency can be given.
Made with Metroplan ©2024



These particulars are believed to be accurate but they are not guaranteed and do not form a contract. Neither Jordan Fishwick nor the vendor or lessor accept any responsibility in respect of these particulars, which are not intended to be statements or representations of fact and any intending purchaser or lessee must satisfy himself by inspection or otherwise as to the correctness of each of the statements contained in these particulars. Any floorplans on this brochure are for illustrative purposes only and are not necessarily to scale.

Offices at: Chorlton, Didsbury, Disley, Hale, Glossop, Macclesfield, Manchester Deansgate, Manchester Whitworth Street, New Mills, Sale, Wilmslow and Withington

2 Union Road, New Mills, High Peak, Derbyshire, SK22 3ES

01663 767878

newmills@jordanfishwick.co.uk

www.jordanfishwick.co.uk