



jordan fishwick

The Risings New Mills High Peak

The Risings New Mills High Peak SK22 3DJ

£600,000



The Property

Commanding open forward views over New Mills and occupying an enviable position within an established, sought after residential area, a substantial detached family home. Superbly presented spacious accommodation comprising: entrance hall, living room, sitting room, cloaks/wc, open plan dining kitchen, utility, first floor galleried landing with balcony, master bedroom with en-suite, four further bedrooms and a bathroom. Integral double garage, double driveway and enclosed private, tiered gardens. Pvc double glazing and gas central heating. Viewing highly recommended.



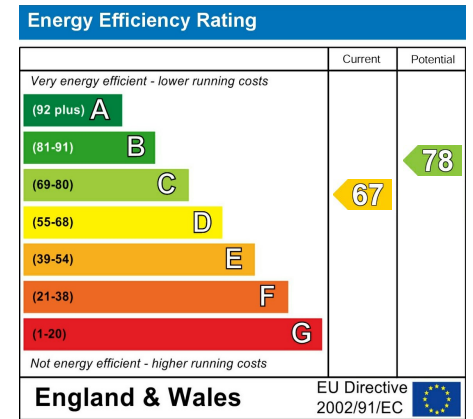
- Stunning Five Bedroom Detached
- Substantial Family Home
- Excellent Location
- Forward Views
- Private Tiered Gardens
- Double Garage and Double Driveway
- Through Living Room Plus Family Room
- Open Plan Dining Kitchen
- Re-Fitted Bathroom And En-Suite
- Front Balcony

Postcode SK22 3DJ

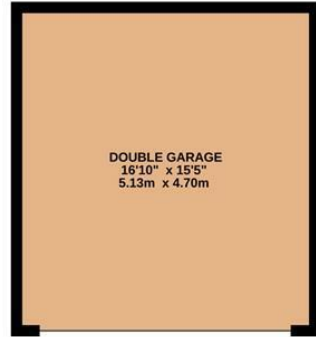
EPC Rating D

Local Authority High Peak

Council Tax F



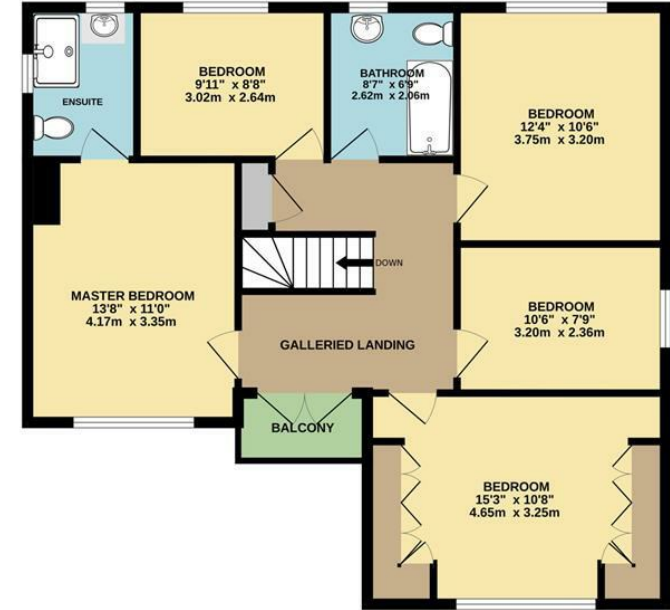
BASEMENT



GROUND FLOOR



1ST FLOOR



Whilst every attempt has been made to ensure the accuracy of the floorplan contained here, measurements of doors, windows, rooms and any other items are approximate and no responsibility is taken for any error, omission or mis-statement. This plan is for illustrative purposes only and should be used as such by any prospective purchaser. The services, systems and appliances shown have not been tested and no guarantee as to their operability or efficiency can be given.
Made with Metropix ©2024



These particulars are believed to be accurate but they are not guaranteed and do not form a contract. Neither Jordan Fishwick nor the vendor or lessor accept any responsibility in respect of these particulars, which are not intended to be statements or representations of fact and any intending purchaser or lessee must satisfy himself by inspection or otherwise as to the correctness of each of the statements contained in these particulars. Any floorplans on this brochure are for illustrative purposes only and are not necessarily to scale.

Offices at: Chorlton, Didsbury, Disley, Hale, Glossop, Macclesfield, Manchester Deansgate, Manchester Whitworth Street, New Mills, Sale, Wilmslow and Withington

2 Union Road, New Mills, High Peak, Derbyshire, SK22 3ES

newmillsforward@jordanfishwick.co.uk

www.jordanfishwick.co.uk