



*Jordan fishwick*

73 Marsh Lane New Mills High Peak

## 73 Marsh Lane New Mills High Peak SK22 4PP

£600,000



### The Property

Commanding open forward views and backing onto farmland, an impressive stone built, double fronted detached residence. Convenient for New Mills amenities yet on the cusp of open countryside, this deceptive, versatile home offers spacious accommodation arranged over four floors. With potential to improve and standing in generous private gardens in excess of 100ft, with off road parking and a detached garage. Comprising: entrance hall, living room, dining room, home office, breakfast kitchen, sun room and utility porch, two useful cellars, four first floor bedrooms, bathroom, separate shower and wc, together with a fantastic dormer loft conversion with two large rooms overlooking fields. Pvc double glazing, gas central heating and viewing highly recommended.



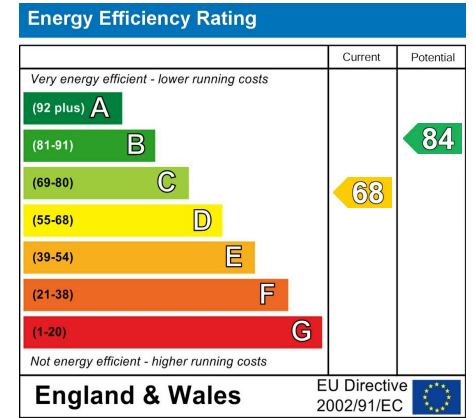
- Substantial Detached Home
- Four Bedrooms Plus Two Loft Rooms
- Backing onto Farmland
- Fantastic Forward Views
- Arranged Over Three Floors Plus Cellars
- Potential to Improve
- Ample Off Road Parking
- Detached Garage
- Large 100FT Private Gardens With Stone Outbuilding
- Energy Rating: D Council Tax Band: D

**Postcode** SK22 4PP

**EPC Rating** D

**Local Authority** High Peak

**Council Tax** D

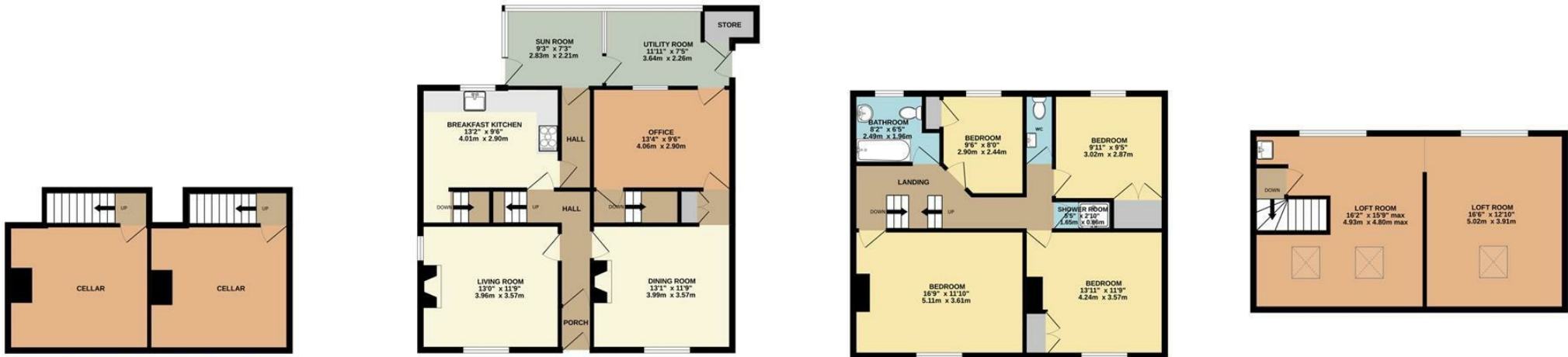


BASEMENT

GROUND FLOOR

1ST FLOOR

2ND FLOOR



Whilst every attempt has been made to ensure the accuracy of the floorplan contained here, measurements of doors, windows, rooms and any other items are approximate and no responsibility is taken for any error, omission or mis-statement. This plan is for illustrative purposes only and should be used as such by any prospective purchaser. The services, systems and appliances shown have not been tested and no guarantee as to their operability or efficiency can be given.

Made with Metropix ©2024



These particulars are believed to be accurate but they are not guaranteed and do not form a contract. Neither Jordan Fishwick nor the vendor or lessor accept any responsibility in respect of these particulars, which are not intended to be statements or representations of fact and any intending purchaser or lessee must satisfy himself by inspection or otherwise as to the correctness of each of the statements contained in these particulars. Any floorplans on this brochure are for illustrative purposes only and are not necessarily to scale.

Offices at: Chorlton, Didsbury, Disley, Hale, Glossop, Macclesfield, Manchester Deansgate, Manchester Whitworth Street, New Mills, Sale, Wilmslow and Withington

2 Union Road, New Mills, High Peak, Derbyshire, SK22 3ES

01663 767878

[newmills@jordanfishwick.co.uk](mailto:newmills@jordanfishwick.co.uk)

[www.jordanfishwick.co.uk](http://www.jordanfishwick.co.uk)