



*Jordan fishwick*

The Priestley Hayfield Road, New Mills,  
Guide Price £514,950



## Hayfield Road High Peak SK22 4HY

Price £514,950



### The Property


The Priestley is an attractive four bedroom detached home, with plenty of kerb appeal, which you'll get to enjoy every time you arrive home. Both upstairs and downstairs, you'll find excellent space for flexible family living.

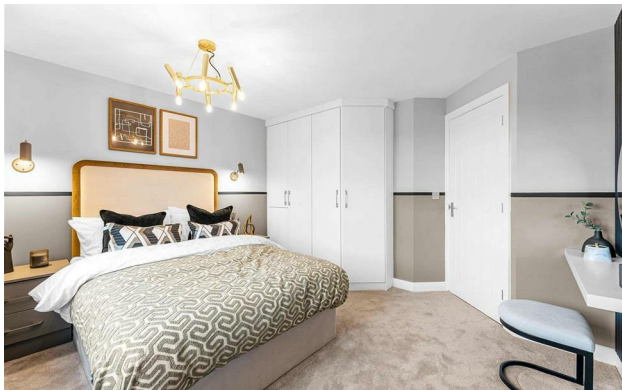
Downstairs, you'll discover a large lounge, with an impressive bay window for you to watch the world go by. French doors lead to your garden from both the lounge and open plan kitchen/diner, which really does add a wow factor. The open plan kitchen/diner is a light and bright space, which is brilliant for family gatherings. If you're looking to work from home, The Priestley features a ground floor study, allowing you to keep home and work life separate.

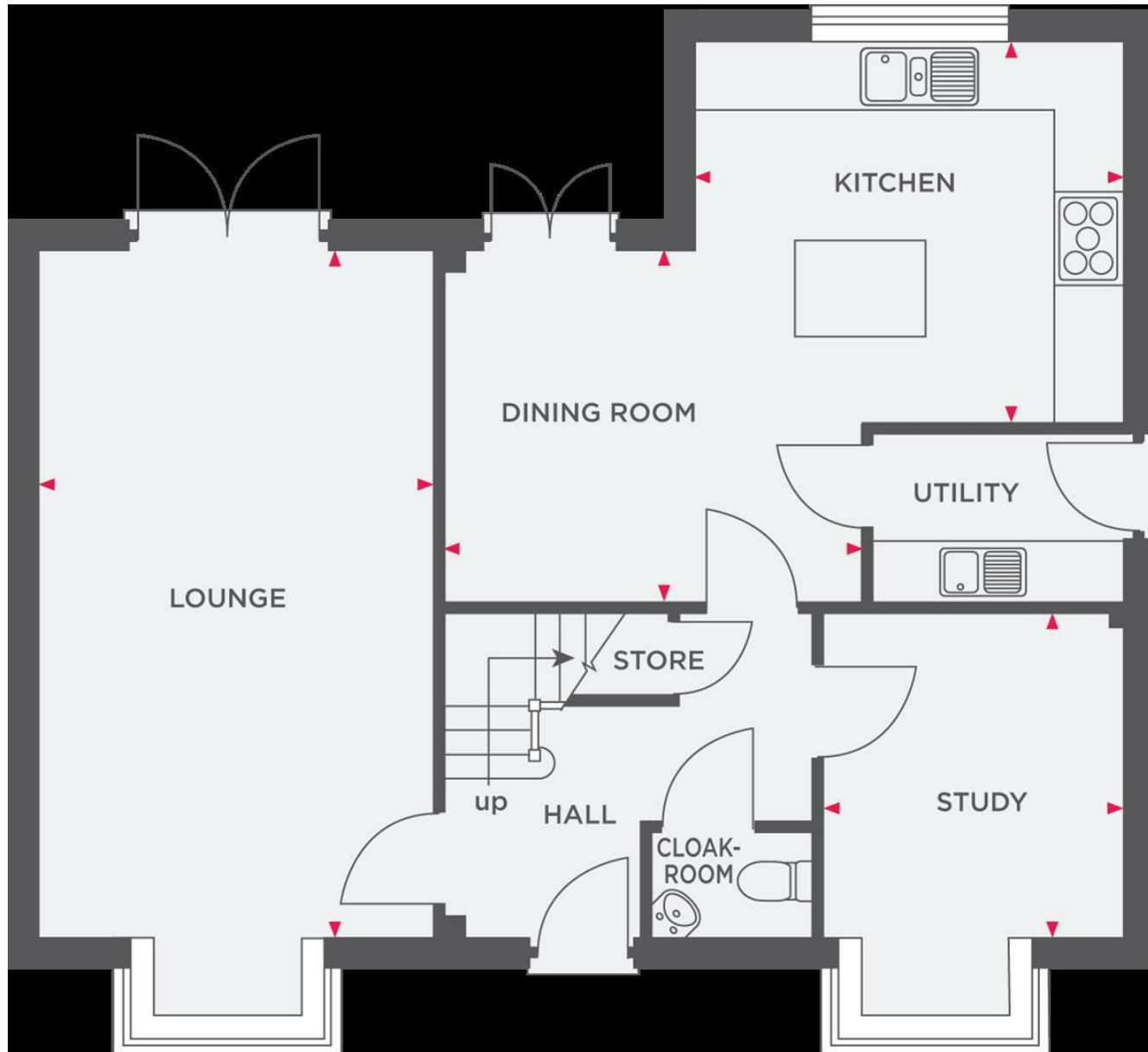
On the first floor, you'll find 4 bedrooms for the family to choose from. Both the main and second bedroom enjoy private en-suite's, so arguing over the bathroom in the morning really will become a thing of the past. There are two further good sized bedrooms and a bathroom for the rest of the family.

- 4 bedrooms
- Open plan kitchen/family/dining area
- Luxury Fitted Kitchen with a Choice of Finishes
- Spacious lounge
- Separate Study & Utility Room
- Single detached garage
- 2 En-suite bathrooms
- Choice of Porcelanosa tiles in bathroom/en-suites
- French doors to rear garden from lounge and dining area
- 10 year NHBC warranty and 2 year builders warranty



Energy Efficiency Rating		
	Current	Potential
Very energy efficient - lower running costs		
(92 plus) <b>A</b>		
(81-91) <b>B</b>		
(69-80) <b>C</b>		
(55-68) <b>D</b>		
(39-54) <b>E</b>		
(21-38) <b>F</b>		
(1-20) <b>G</b>		
Not energy efficient - higher running costs		
<b>England &amp; Wales</b>	EU Directive 2002/91/EC 	





These particulars are believed to be accurate but they are not guaranteed and do not form a contract. Neither Jordan Fishwick nor the vendor or lessor accept any responsibility in respect of these particulars, which are not intended to be statements or representations of fact and any intending purchaser or lessee must satisfy himself by inspection or otherwise as to the correctness of each of the statements contained in these particulars. Any floorplans on this brochure are for illustrative purposes only and are not necessarily to scale.

Offices at: Chorlton, Didsbury, Disley, Hale, Glossop, Macclesfield, Manchester Deansgate, Manchester Whitworth Street, New Mills, Sale, Wilmslow and Withington