



jordan fishwick

High Hill Road Birch Vale High Peak



High Hill Road Birch Vale High Peak SK22 1BA

£259,000



The Property

REDUCED PRICE Forming part of a very popular row of larger style cottages on the doorstep of the Sett Valley Trail in Birch Vale, an immaculate, stone built mid terraced character property. Situated behind a walled frontage and boasting low maintenance 'Indian Stone' paved garden with stone stores, this superb property will appeal to many. Ceramic wood burning stove, re-fitted kitchen (with Granite tops), two generous bedrooms (smallest 10'2 x 7'7) and re-fitted shower room. Pvc double glazing, gas central heating and NO CHAIN. Viewing highly recommended.




- Reduced Price
- Larger Style Stone Built Terrace
- Close to The Sett Valley Trail
- Two Good Sized Bedrooms
- Re-Fitted Kitchen with Granite Tops
- Energy Rating: D Council Tax: B
- Ornate Ceramic Wood Burning Stove
- Open Aspect
- Indian Stone Paved Garden With Store
- No Chain

Postcode SK22 1BA

EPC Rating D

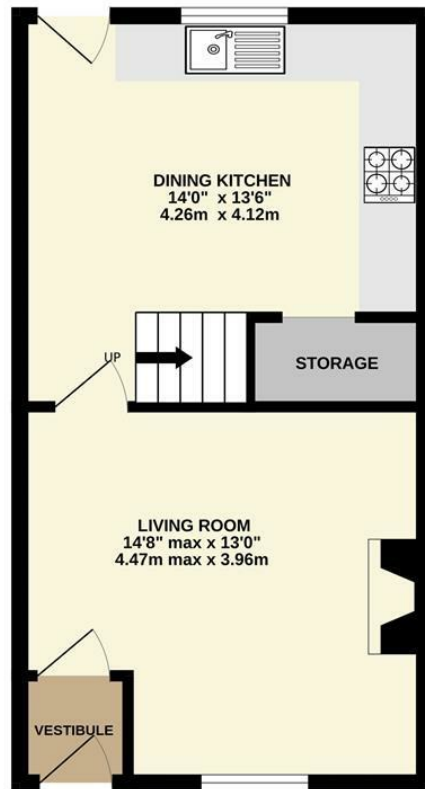
Local Authority High Peak

Council Tax B

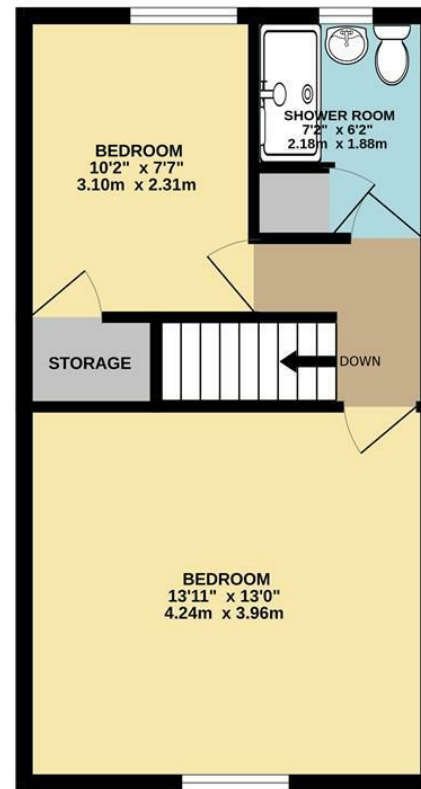
Energy Efficiency Rating		Current	Potential
Very energy efficient - lower running costs			
(92 plus) A			
(81-91) B			85
(69-80) C		67	
(55-68) D			
(39-54) E			
(21-38) F			
(1-20) G			
Not energy efficient - higher running costs			
England & Wales		EU Directive 2002/91/EC 	



GROUND FLOOR



1ST FLOOR



Whilst every attempt has been made to ensure the accuracy of the floorplan contained here, measurements of doors, windows, rooms and any other items are approximate and no responsibility is taken for any error, omission or mis-statement. This plan is for illustrative purposes only and should be used as such by any prospective purchaser. The services, systems and appliances shown have not been tested and no guarantee as to their operability or efficiency can be given.
Made with Metropix ©2024



These particulars are believed to be accurate but they are not guaranteed and do not form a contract. Neither Jordan Fishwick nor the vendor or lessor accept any responsibility in respect of these particulars, which are not intended to be statements or representations of fact and any intending purchaser or lessee must satisfy himself by inspection or otherwise as to the correctness of each of the statements contained in these particulars. Any floorplans on this brochure are for illustrative purposes only and are not necessarily to scale.

Offices at: Chorlton, Didsbury, Disley, Hale, Glossop, Macclesfield, Manchester Deansgate, Manchester Whitworth Street, New Mills, Sale, Wilmslow and Withington

2 Union Road, New Mills, High Peak, Derbyshire, SK22 3ES

01663 767878

newmills@jordanfishwick.co.uk

www.jordanfishwick.co.uk