



*jordan fishwick*

Godward Road New Mills High Peak





## Godward Road New Mills High Peak SK22 3BU

£525,000



### The Property

Situated within a most sought after location with fantastic southerly facing gardens and open views, a truly deceptive and immaculately presented family home. Extended and improved over the years, providing spacious, versatile accommodation that is sure to appeal to many families. Standing in a generous plot and comprising: ground floor entrance hall, beautiful re-fitted breakfast kitchen with Neff appliances, sitting room, open plan dining and living room, study, lower ground floor master bedroom with fitted furniture and en-suite bathroom, three further bedrooms (smallest 9'3 x 8'11) family bathroom, utility room and wc. Ample driveway parking, integral garage, bespoke double glazing and gas central heating. Viewing essential.





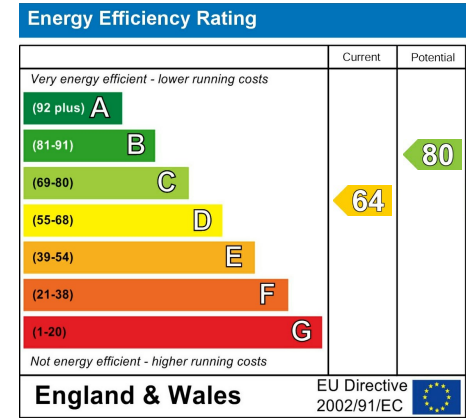
- Fantastic Rear Aspect
- Amazing Views
- Large Gardens
- Extended Accommodation
- Four Bedrooms
- Immaculately Presented
- Sought After Location
- Driveway and Garage
- En-Suite, Utility and Study
- Re-fitted Kitchen with Neff Appliances

**Postcode** SK22 3BU

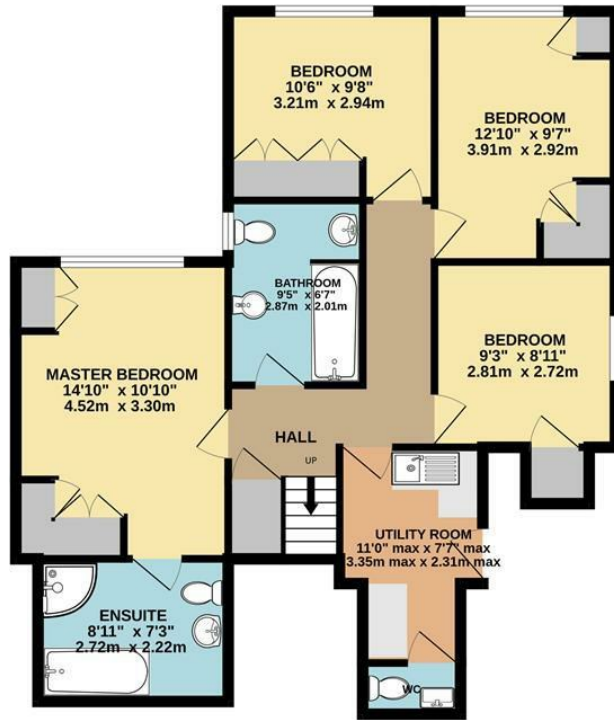
**EPC Rating** D

**Local Authority** High Peak Borough Council

**Council Tax** D



LOWER GROUND FLOOR



GROUND FLOOR



Whilst every attempt has been made to ensure the accuracy of the floorplan contained here, measurements of doors, windows, rooms and any other items are approximate and no responsibility is taken for any error, omission or mis-statement. This plan is for illustrative purposes only and should be used as such by any prospective purchaser. The services, systems and appliances shown have not been tested and no guarantee as to their operability or efficiency can be given.  
 Made with Metropix ©2024



These particulars are believed to be accurate but they are not guaranteed and do not form a contract. Neither Jordan Fishwick nor the vendor or lessor accept any responsibility in respect of these particulars, which are not intended to be statements or representations of fact and any intending purchaser or lessee must satisfy himself by inspection or otherwise as to the correctness of each of the statements contained in these particulars. Any floorplans on this brochure are for illustrative purposes only and are not necessarily to scale.

Offices at: Chorlton, Didsbury, Disley, Hale, Glossop, Macclesfield, Manchester Deansgate, Manchester Whitworth Street, New Mills, Sale, Wilmslow and Withington

2 Union Road, New Mills, High Peak, Derbyshire, SK22 3ES

[newmillsforward@jordanfishwick.co.uk](mailto:newmillsforward@jordanfishwick.co.uk)

[www.jordanfishwick.co.uk](http://www.jordanfishwick.co.uk)