



*jordan fishwick*

High Lea Road New Mills High Peak



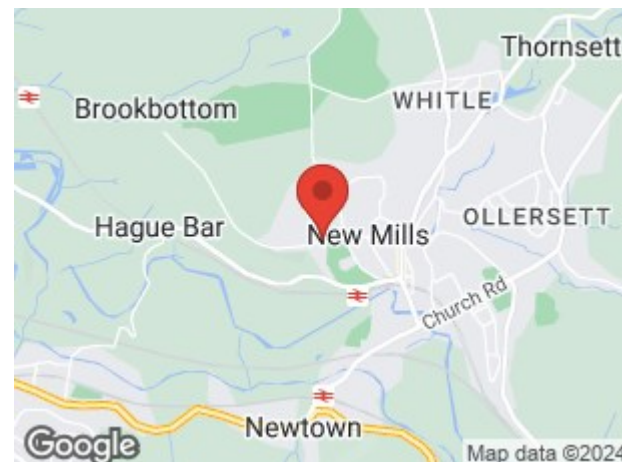
## High Lea Road New Mills High Peak SK22 3DP

Price £390,000



### The Property

Located within one of the most desirable areas in New Mills, overlooking High Lea Park, a superb stone built semi-detached period home. Accommodation arranged over three floors, walled frontage and enclosed rear garden. Wooded forward aspect, gas central heating and pvc double glazing. Comprising: entrance hall with original style tiled floor, living room, separate dining room, breakfast kitchen, wc, two first floor double bedrooms, 26ft landing, study/dressing area, bathroom with separate shower and a second floor loft bedroom with fitted wardrobes. Close to New Mills centre and railway station. Viewing essential.




- Sought After Location
- Overlooking High Lea Park
- Large Stone Semi-Detached
- Arranged Over Three Floors
- Three Bedrooms Plus Study Area
- Energy Rating: D Council Tax: D
- Living and Dining Room
- Convenient For New Mills Centre and Station
- Enclosed Garden

**Postcode** SK22 3DP

**EPC Rating** D

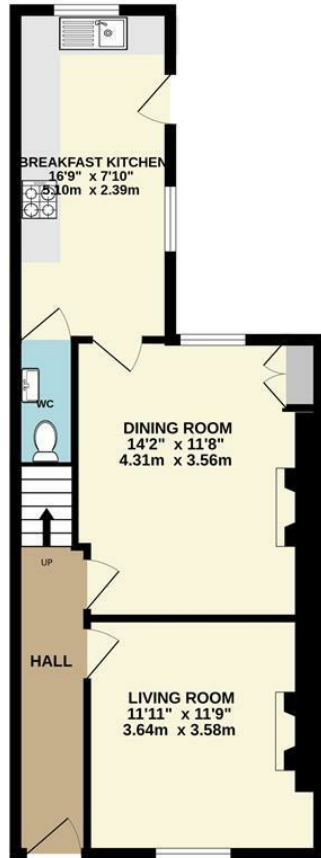
**Local Authority** High Peak Borough

**Council Tax** D

Energy Efficiency Rating		Current	Potential
Very energy efficient - lower running costs			
(92 plus) A			
(81-91) B			82
(69-80) C		64	
(55-68) D			
(39-54) E			
(21-38) F			
(1-20) G			
Not energy efficient - higher running costs			
<b>England &amp; Wales</b>		EU Directive 2002/91/EC 	



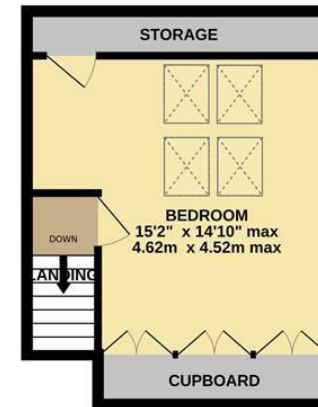
GROUND FLOOR



1ST FLOOR



2ND FLOOR



Whilst every attempt has been made to ensure the accuracy of the floorplan contained here, measurements of doors, windows, rooms and any other items are approximate and no responsibility is taken for any error, omission or mis-statement. This plan is for illustrative purposes only and should be used as such by any prospective purchaser. The services, systems and appliances shown have not been tested and no guarantee as to their operability or efficiency can be given.  
Made with Metropix ©2024



These particulars are believed to be accurate but they are not guaranteed and do not form a contract. Neither Jordan Fishwick nor the vendor or lessor accept any responsibility in respect of these particulars, which are not intended to be statements or representations of fact and any intending purchaser or lessee must satisfy himself by inspection or otherwise as to the correctness of each of the statements contained in these particulars. Any floorplans on this brochure are for illustrative purposes only and are not necessarily to scale.

Offices at: Chorlton, Didsbury, Disley, Hale, Glossop, Macclesfield, Manchester Deansgate, Manchester Whitworth Street, New Mills, Sale, Wilmslow and Withington

2 Union Road, New Mills, High Peak, Derbyshire, SK22 3ES

[newmillsforward@jordanfishwick.co.uk](mailto:newmillsforward@jordanfishwick.co.uk)

[www.jordanfishwick.co.uk](http://www.jordanfishwick.co.uk)