



jordan fishwick

Lea Road Hayfield High Peak



Lea Road Hayfield High Peak SK22 2HE

Auction Guide £220,000



The Property

** This property is for sale by Modern Method of Auction powered by iamsold LTD - Starting Bid £220,000 + Reservation Fee**

Towards the head of cul-de-sac with views to The Lantern Pike in Hayfield, a two double bedroom semi-detached family home. Standing in fantastic, generous sized gardens extending to approx 100ft with off road parking to the front and well presented accommodation internally comprising: entrance hall, 19ft living/dining room, kitchen, conservatory, utility/store, two first floor bedrooms (smallest 10'2 x 10'2) and family bathroom. Pvc double glazing, recently installed gas central heating, cavity wall and loft insulation. Viewing highly recommended.




- For Sale by Modern Auction
- Subject to Reserve Price & Reservation Fee
- Off Road Parking and 100ft Garden
- 19FT Living Room Plus Conservatory
- Hayfield Village Location
- Pvc Double Glazing and Recently Installed Gas Central Heating
- Cul-de-sac Position with Pleasant Views
- Recently Installed Cavity Wall and Loft Insulation

Postcode SK22 2HE

EPC Rating C

Local Authority High Peak

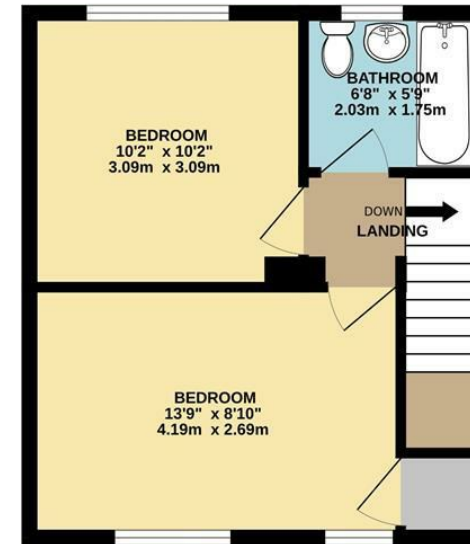
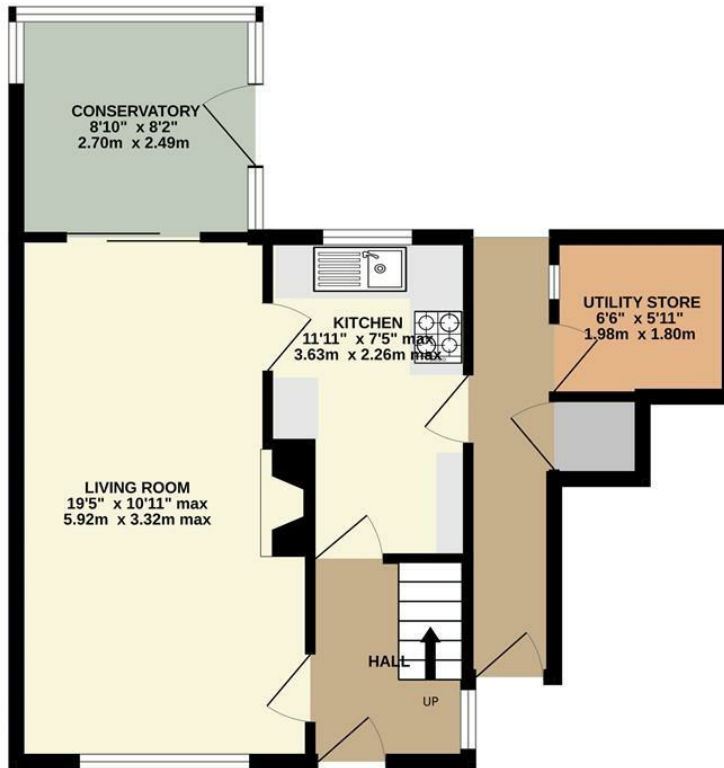
Council Tax B

Energy Efficiency Rating		Current	Potential
Very energy efficient - lower running costs			
(92 plus) A			85
(81-91) B			
(69-80) C		70	
(55-68) D			
(39-54) E			
(21-38) F			
(1-20) G			
Not energy efficient - higher running costs			
England & Wales		EU Directive 2002/91/EC 	



GROUND FLOOR

1ST FLOOR



Whilst every attempt has been made to ensure the accuracy of the floorplan contained here, measurements of doors, windows, rooms and any other items are approximate and no responsibility is taken for any error, omission or mis-statement. This plan is for illustrative purposes only and should be used as such by any prospective purchaser. The services, systems and appliances shown have not been tested and no guarantee as to their operability or efficiency can be given.
Made with Metropix ©2023



These particulars are believed to be accurate but they are not guaranteed and do not form a contract. Neither Jordan Fishwick nor the vendor or lessor accept any responsibility in respect of these particulars, which are not intended to be statements or representations of fact and any intending purchaser or lessee must satisfy himself by inspection or otherwise as to the correctness of each of the statements contained in these particulars. Any floorplans on this brochure are for illustrative purposes only and are not necessarily to scale.

Offices at: Chorlton, Didsbury, Disley, Hale, Glossop, Macclesfield, Manchester Deansgate, Manchester Whitworth Street, New Mills, Sale, Wilmslow and Withington

2 Union Road, New Mills, High Peak, Derbyshire, SK22 3ES

newmillsforward@jordanfishwick.co.uk

www.jordanfishwick.co.uk