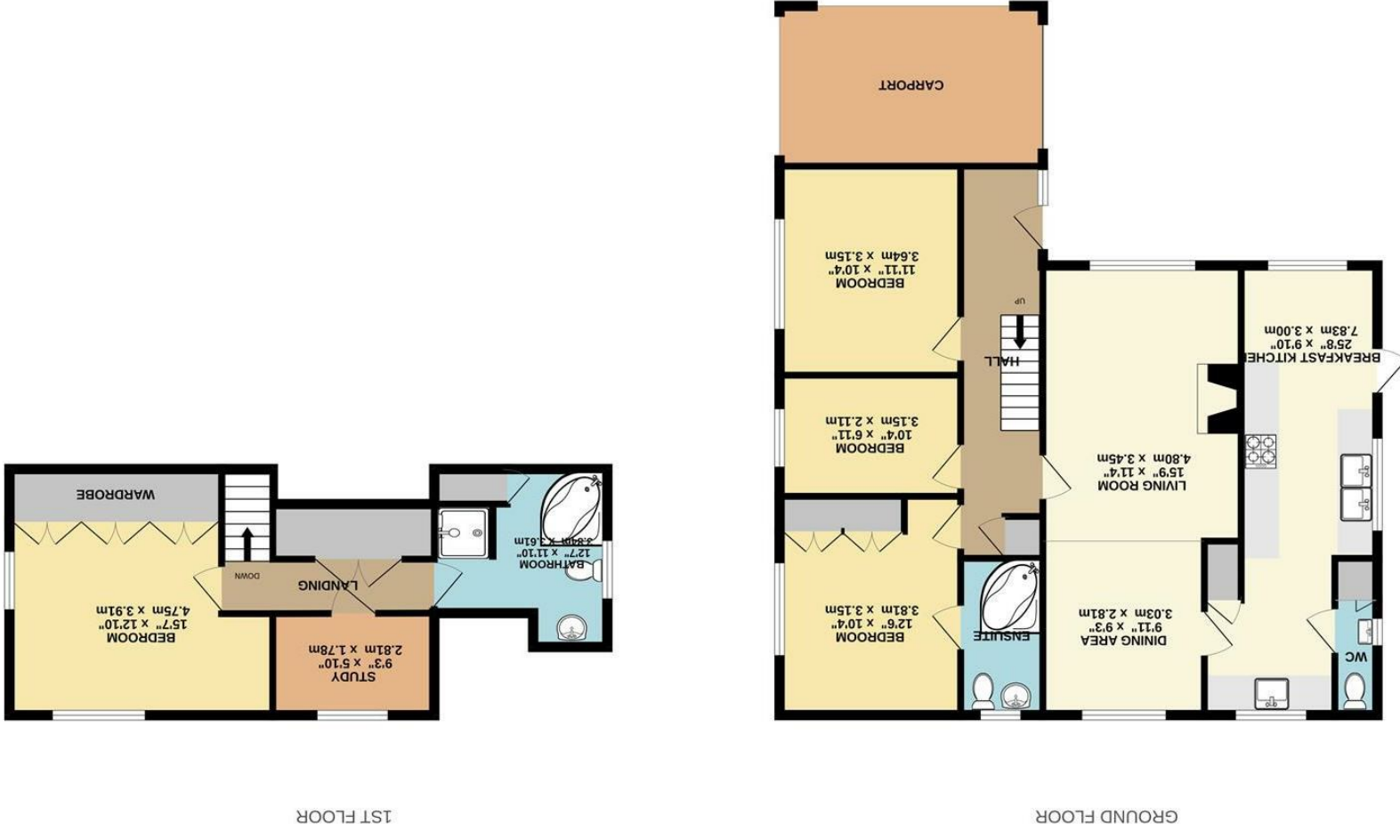


These particulars are believed to be accurate but they are not guaranteed and do not form a contract. Neither Jordan Fishwick nor the vendor or lessor accept any responsibility in respect of these particulars, which are not intended to be statements or representations of fact and any intending purchaser or lessee must satisfy himself by inspection or otherwise as to the correctness of each of the statements contained in these particulars. Any floorplans on this brochure are for illustrative purposes only and are not necessarily to scale.

Whilst every attempt has been made to ensure the accuracy of the floorplan contained here, measurements of doors, windows, rooms and other items are approximate and no responsibility is taken for any error, omission or mis-statement. This plan is for illustrative purposes only and should be used as such by any prospective purchaser. The services, systems and appliances shown have not been tested and no guarantee as to their operability or efficiency can be given.  
Made with Metropix ©2024



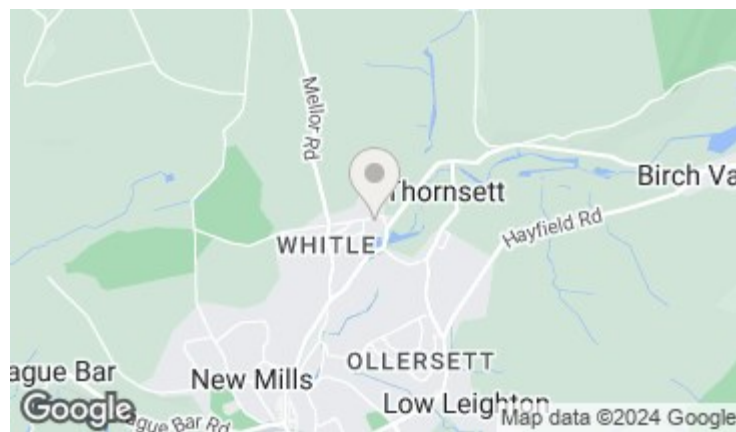
9 Watford Road, New Mills, High Peak, SK22 4EJ

Reduced £460,000



### The Property

Tucked away in a secluded position with fabulous open rear views, a versatile and deceptive, four bedroom detached dormer bungalow. Occupying an enviable position on the cusp of New Mills and close to open countryside, this wonderful home will appeal to many. Private manageable gardens, off road parking and useful car port. Comprising: entrance hall, 25ft lounge through dining room, 25ft breakfast kitchen with utility area, wc, master bedroom with en-suite bathroom, two further ground floor bedrooms, first floor bedroom, study and family bathroom. Well presented throughout and Viewing highly recommended.



- Fantastic Rear Views
- Detached Dormer Bungalow
- Four Bedrooms Plus Study
- Sought After Location
- Private Gardens
- Off Road Parking and Car Port
- Well Presented Throughout
- 25ft Breakfast Kitchen
- 25ft Lounge/Dining Room

Postcode - SK22 4EJ  
EPC Rating - D  
Local Authority - High Peak  
Council Tax - C

