



jordan fishwick

New Street New Mills High Peak

New Street New Mills High Peak SK22 4PE

Auction Guide £160,000



The Property

** This property is for sale by Modern Method of Auction powered by iamsold LTD - Starting Bid £160,000 + Reservation Fee**

Conveniently located on a popular side street in New Mills and backing onto playing fields, a traditional stone built terraced cottage. Sat behind a walled frontage and boasting a delightful enclosed rear gardens, this two bedroom property is offered for sale with no onward chain. Pvc double glazing and gas central heating. Comprising: entrance vestibule, living room, dining kitchen with feature brick chimney breast, two first floor bedrooms and a bathroom with white suite. Ideal First Time Buyer property.



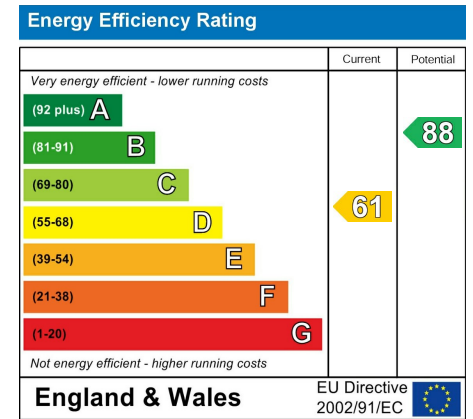
- For Sale By Auction - T & C's Apply
- Within 1/2 a Mile of New Mills Centre
- Backing Onto Playing Fields
- Two Bedrooms
- Traditional Cottage
- Energy Rating: D Council Tax Band: B
- Pvc Double Glazing and Gas Central Heating
- No Chain

Postcode SK22 4PE

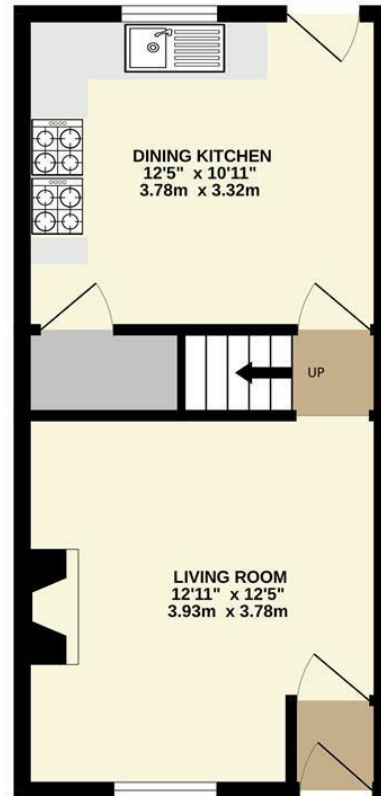
EPC Rating D

Local Authority High Peak

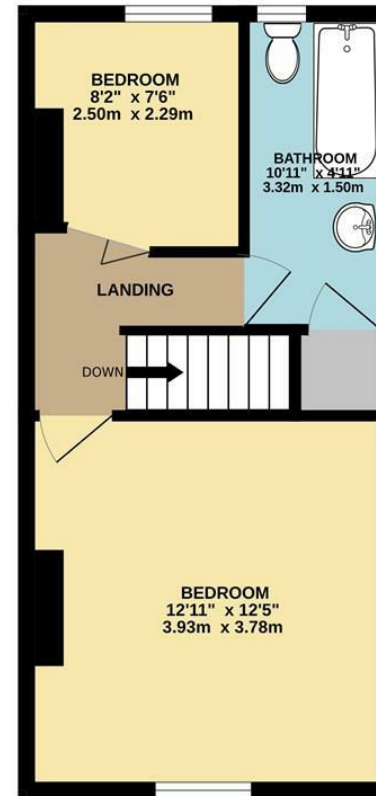
Council Tax B



GROUND FLOOR



1ST FLOOR



Whilst every attempt has been made to ensure the accuracy of the floorplan contained here, measurements of doors, windows, rooms and any other items are approximate and no responsibility is taken for any error, omission or mis-statement. This plan is for illustrative purposes only and should be used as such by any prospective purchaser. The services, systems and appliances shown have not been tested and no guarantee as to their operability or efficiency can be given.
Made with Metropix ©2023



These particulars are believed to be accurate but they are not guaranteed and do not form a contract. Neither Jordan Fishwick nor the vendor or lessor accept any responsibility in respect of these particulars, which are not intended to be statements or representations of fact and any intending purchaser or lessee must satisfy himself by inspection or otherwise as to the correctness of each of the statements contained in these particulars. Any floorplans on this brochure are for illustrative purposes only and are not necessarily to scale.

Offices at: Chorlton, Didsbury, Disley, Hale, Glossop, Macclesfield, Manchester Deansgate, Manchester Whitworth Street, New Mills, Sale, Wilmslow and Withington

2 Union Road, New Mills, High Peak, Derbyshire, SK22 3ES

newmillsforward@jordanfishwick.co.uk

www.jordanfishwick.co.uk