



jordan fishwick

The Glade Hayfield High Peak



The Glade Hayfield High Peak SK22 2AB

Reduced To £599,950



The Property

Sitting on a popular small modern development in the heart of Hayfield Village, a beautiful home of generous proportions. Landscaped low maintenance gardens and spacious, well presented accommodation are sure to appeal to many buyers. Conveniently positioned for the village centre and primary school this five bedroom detached executive home has to be viewed. Comprising: storm porch, entrance hall, wc, 23ft living room, 29ft living dining kitchen, utility room, first floor master bedroom with en-suite, guest bedroom with en-suite, three further bedrooms plus a family bathroom. Integral garage and double width driveway. Get in touch today 01663 767878




- Executive Detached House
- Popular Village Location
- Cul-de-sac Position
- Five Proper Bedrooms
- Two En-Suites
- Energy Rating: B Council Tax: E
- 2014 Built Home
- Landscaped Gardens
- Garage and Driveway Parking
- 29ft Living Dining Kitchen

Postcode SK22 2AB

EPC Rating B

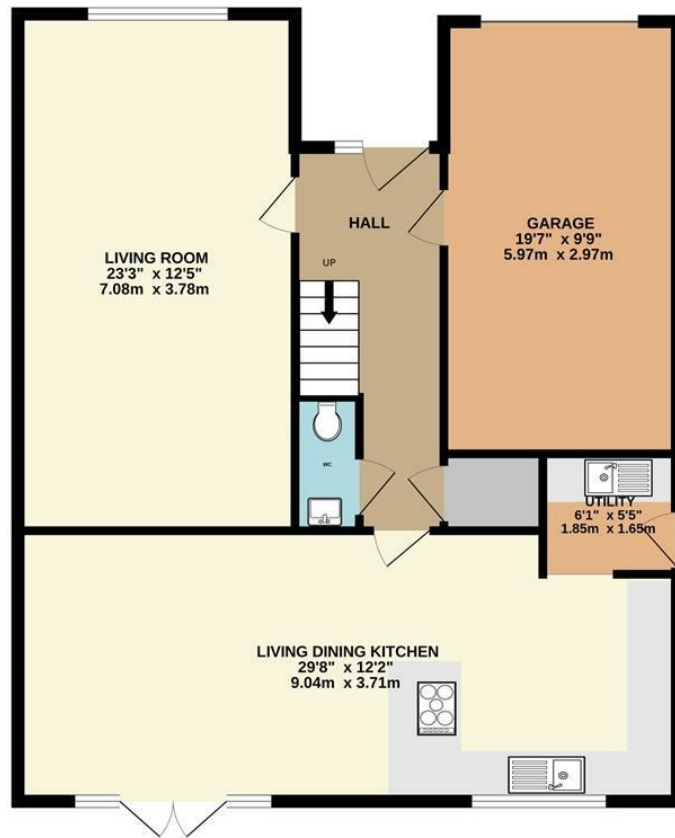
Local Authority High Peak Borough Council

Council Tax E

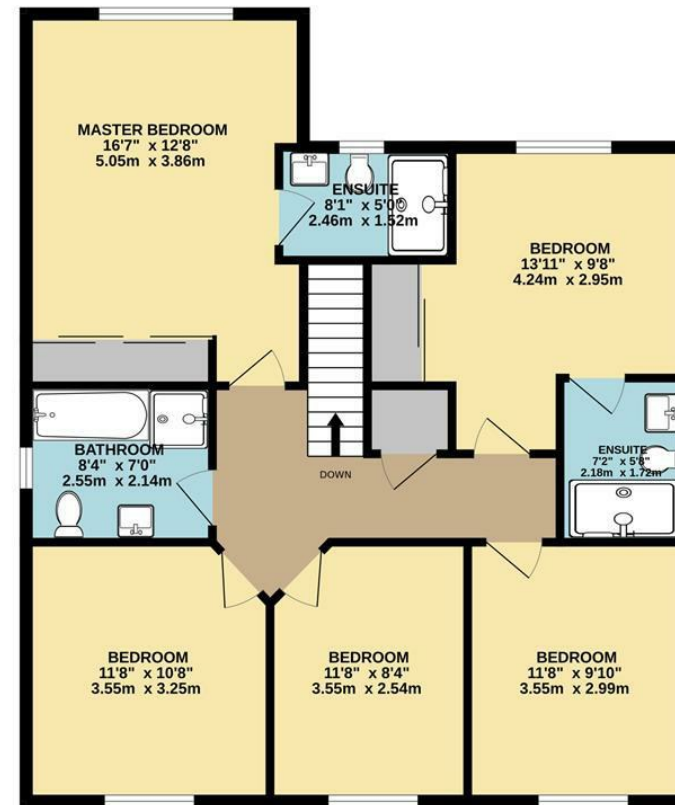
Energy Efficiency Rating		
	Current	Potential
Very energy efficient - lower running costs		
(92 plus) A		91
(81-91) B	84	
(69-80) C		
(55-68) D		
(39-54) E		
(21-38) F		
(1-20) G		
Not energy efficient - higher running costs		
England & Wales	EU Directive 2002/91/EC 	



GROUND FLOOR



1ST FLOOR



Whilst every attempt has been made to ensure the accuracy of the floorplan contained here, measurements of doors, windows, rooms and any other items are approximate and no responsibility is taken for any error, omission or mis-statement. This plan is for illustrative purposes only and should be used as such by any prospective purchaser. The services, systems and appliances shown have not been tested and no guarantee as to their operability or efficiency can be given.
 Made with Metropix ©2023



These particulars are believed to be accurate but they are not guaranteed and do not form a contract. Neither Jordan Fishwick nor the vendor or lessor accept any responsibility in respect of these particulars, which are not intended to be statements or representations of fact and any intending purchaser or lessee must satisfy himself by inspection or otherwise as to the correctness of each of the statements contained in these particulars. Any floorplans on this brochure are for illustrative purposes only and are not necessarily to scale.

Offices at: Chorlton, Didsbury, Disley, Hale, Glossop, Macclesfield, Manchester Deansgate, Manchester Whitworth Street, New Mills, Sale, Wilmslow and Withington

2 Union Road, New Mills, High Peak, Derbyshire, SK22 3ES

01663 767878

newmills@jordanfishwick.co.uk

www.jordanfishwick.co.uk