



## Panorama Reigit Lane, Murton, Swansea, City & County Of Swansea, SA3 3AN

**£525,000**

Welcome to Panorama. Positioned on a private road in a tranquil rural setting, this family home offers picturesque countryside and sea views that must be seen to be appreciated. This property has a substantial internal footprint of over 1591 square feet, set on a good-sized plot of 0.16 acres. The property does require some modernisation, however, the potential of this home and its location offer an exciting opportunity for buyers to create their dream rural retreat with stunning countryside and sea views.

The property comprises a hallway, cloakroom, lounge, dining room leading into a conservatory, and a kitchen that completes the ground floor. Upstairs, there are three bedrooms and a bathroom.

Externally, the property features driveway parking for several vehicles leading to a garage, along with a storage room and WC for added convenience. The rear of the property boasts a lawned garden with patio

### Entrance

Via a frosted double glazed PVC door with frosted double glazed side panels into the hallway.

### Hallway



With stairs to the first floor. Door to the cloakroom. Door to the lounge. Door to the kitchen. Radiator. Parquet flooring.

### Cloakroom 9'3" x 2'6" (2.834 x 0.781 )

You have a frosted double glazed window to the side. Suite comprising; WC. Wash hand basin. Tiled floor. Tiled walls. Spotlights.

### Lounge 11'11" x 12'5" (3.633 x 3.807 )



You have a double glazed bay window to the front. Radiator. Feature fireplace. Sliding doors to the dining room.

### Lounge



### Dining Room 13'1" x 12'7" (4.006 x 3.845 )



With a set of double glazed windows to the side. Radiator. Set of French doors to the conservatory.

## Dining Room



## Conservatory 13'10" x 20'2" (4.235 x 6.167 )



With two double glazed PVC doors to the rear. Set of double glazed windows to the rear. Two radiators. Opening to the kitchen.

## Conservatory



## Kitchen 11'4" x 9'11" (3.46 x 3.04 )

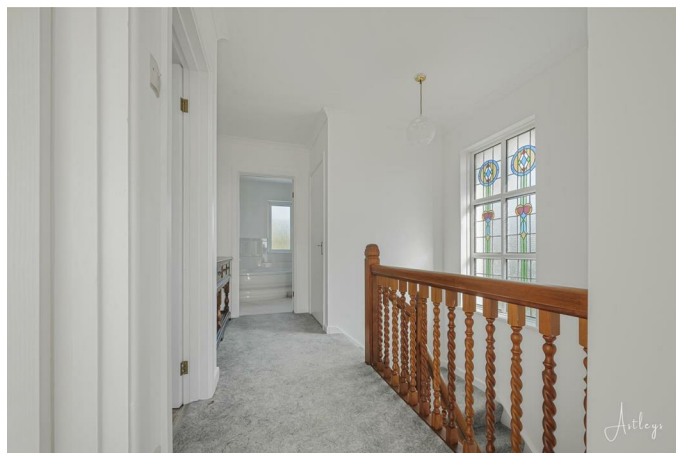


With a set of double glazed windows to the side. Doors to built in storage cupboards. Running work surface incorporating a one and a half bowl stainless steel sink and drainer unit. The kitchen is fitted with a range of base and wall units. Space for cooker. Space for dishwasher. Space for fridge/freezer. Plumbing for washing machine. Tiled floor. Radiator.

## Kitchen



## Landing



## First Floor

### Landing



With loft access. Door to bathroom. Doors to bedrooms. Door to storage cupboard. Frosted double glazed stained glass to the side.

## Bathroom 8'2" x 9'10" (2.506 x 3.012 )



You have a set of frosted double glazed windows to the rear. Suite comprising large corner bathtub. Large corner shower cubicle. WC. Wash hand basin. Radiator. Spotlights.

## Bathroom



## Bedroom One



## Bedroom One 12'0" x 12'8" (3.659 x 3.872 )



You have a double glazed bay window to the front offering sea views. Radiator.

## Bedroom Two 13'3" x 12'7" (4.055 x 3.844)



You have a set of double glazed windows to the rear. Radiator.

### Bedroom Three 8'4" x 8'4" (2.565 x 2.541 )



You have a set of double glazed windows to the front offering sea views. Radiator.

### Bedroom Three



### External

### Another Aspect



### Aerial Aspect



### Aerial Aspect



### Aerial Aspect



### Front



You have private parking for several vehicles leading to the detached garage. Side access on both sides of the property to the rear. Lawned garden with a variety of flowers, trees and shrubs.

### Garage 18'1" x 10'7" (5.533 x 3.236 )

Accessed via a set of metal doors, you have a set of frosted glazed windows to the side and a double glazed window to the side. Power & light.

### Rear



You have a patio seating area with ample room for tables and chairs which in turn leads to a lawned garden. The rear garden is home again to a variety of flowers, trees and shrubs. You also have a detached greenhouse.

### Rear



### Rear



### Services

Oil. Mains electric. Cesspit. Mains water. Private Road, costs shared by residents. Broadband type - No broadband installed -Broadband (estimated speeds) available- Standard 28 mbps & Superfast 76 mbps. Mobile phone coverage available with EE, Three, O2 & Vodafone.

### Council Tax Band

Council Tax Band - F

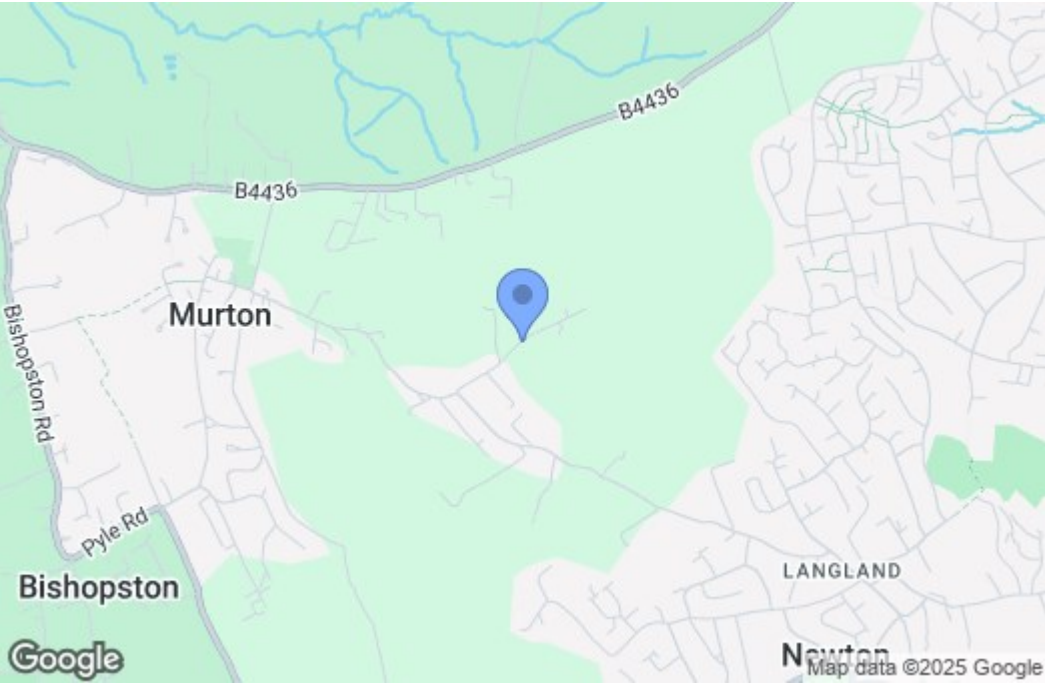
### Tenure

Freehold.

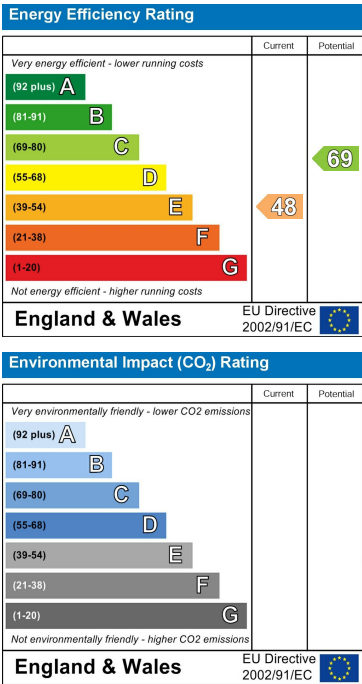
Floor Plan



Area Map



Energy Efficiency Graph



These particulars, whilst believed to be accurate are set out as a general outline only for guidance and do not constitute any part of an offer or contract. Intending purchasers should not rely on them as statements of representation of fact, but must satisfy themselves by inspection or otherwise as to their accuracy. No person in this firm's employment has the authority to make or give any representation or warranty in respect of the property.