



## 18 Chestnut Avenue, West Cross, Swansea, City & County Of Swansea, SA3 5NL

**Offers Over £300,000**

This three-bedroom detached bungalow presents an exciting opportunity for those looking to create a home to their own taste, offered for sale with no onward chain. Situated close to the vibrant village of Mumbles, the property occupies a plot of approximately 0.08 acres with a total floor area of 896 square feet. While requiring updating throughout, it offers tremendous scope for renovation and modernisation, making it an appealing prospect for a variety of buyers.

The accommodation comprises a welcoming hallway, a spacious lounge, a kitchen, a bathroom, and three bedrooms. Externally, the property benefits from private driveway parking for two to three vehicles, leading to a garage. The front garden is laid to lawn with side access leading to the rear. The rear garden is also lawned and is enclosed by fencing and hedging, offering a private outdoor space, with further access to the garage.

This property provides the perfect canvas for a purchaser wishing to add value and personalise a home, all within easy reach of the amenities, coastline, and charm that Mumbles has to offer.



### Entrance

Via a frosted double glazed PVC door with frosted double glazed side panel into the hallway.

### Hallway

With door to storage cupboard. Radiator. Door to bathroom. Door to kitchen. Door to lounge. Door to bedrooms.

### Lounge 17'0" x 11'6" (5.207 x 3.526 )



You have a set of double glazed windows to the rear overlooking the rear garden. Radiator and a feature fireplace.

### Lounge



### Kitchen 20'1" x 10'3" (6.125 x 3.125 )



You have a set of double glazed windows to the rear and a set of double glazed windows to the side. Frosted double glazed PVC door to the side. Radiator. Door to storage cupboard. The kitchen is fitted with a range of base and wall units. Running work surface incorporating a one and a half bowl sink and drainer unit. You have space for cooker, space for fridge freezer.

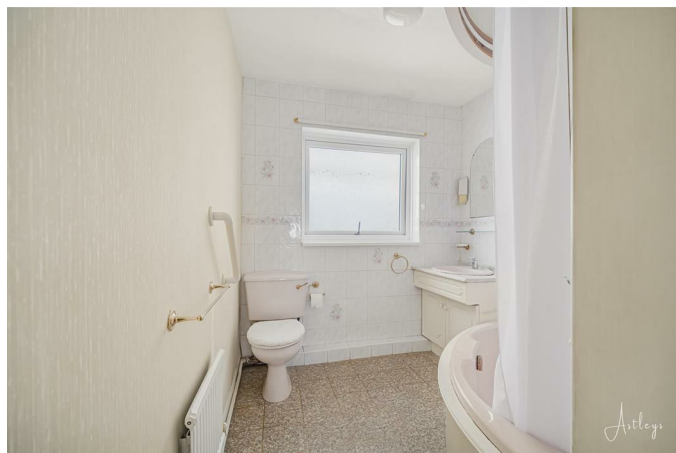
### Kitchen



## Kitchen



## Bathroom



## Bathroom 10'6" x 7'0" (3.222 x 2.154 )



With a frosted double glazed window to the side. Suite comprising corner bathtub with shower over. WC. Wash hand basin. Radiator.

## Bedroom One 13'0" x 10'3" (3.969 x 3.134 )



You have a set of double glazed windows to the front. Radiator. Sliding doors to built in wardrobe.

### Bedroom One



### Bedroom Two



### Bedroom Two 9'6" x 11'7" (2.908 x 3.546 )



You have a set of double glazed windows to the front. Radiator. Sliding doors to built in wardrobe.

### Bedroom Three 8'1" x 8'8" (2.489 x 2.663 )



You have a set of double glazed windows to the side. Radiator.



**Bedroom Three**



**External**

**Front**



You have private driveway parking for two to three vehicles leading to the garage. Externally to the front you have a lawned garden with side access to the rear.

**Aerial Aspect**



**Aerial Aspect**



**Garage 18'2" x 9'1" (5.555 x 2.770 )**

Via electric 'up and over' door. You have power and light and a frosted double glazed window to the rear and a frosted double glazed PVC door to the rear.

#### Rear



You have a lawned garden bordered by fencing and hedging. Side access. Door to the garage.

#### Rear



#### Rear



#### Services

Oil central heating. Mains Water and sewerage. Broadband - ultrafast available. Phone Signal available with multiple providers.

#### Council Tax Band

Council Tax Band - E

#### Tenure

Freehold.



Floor Plan

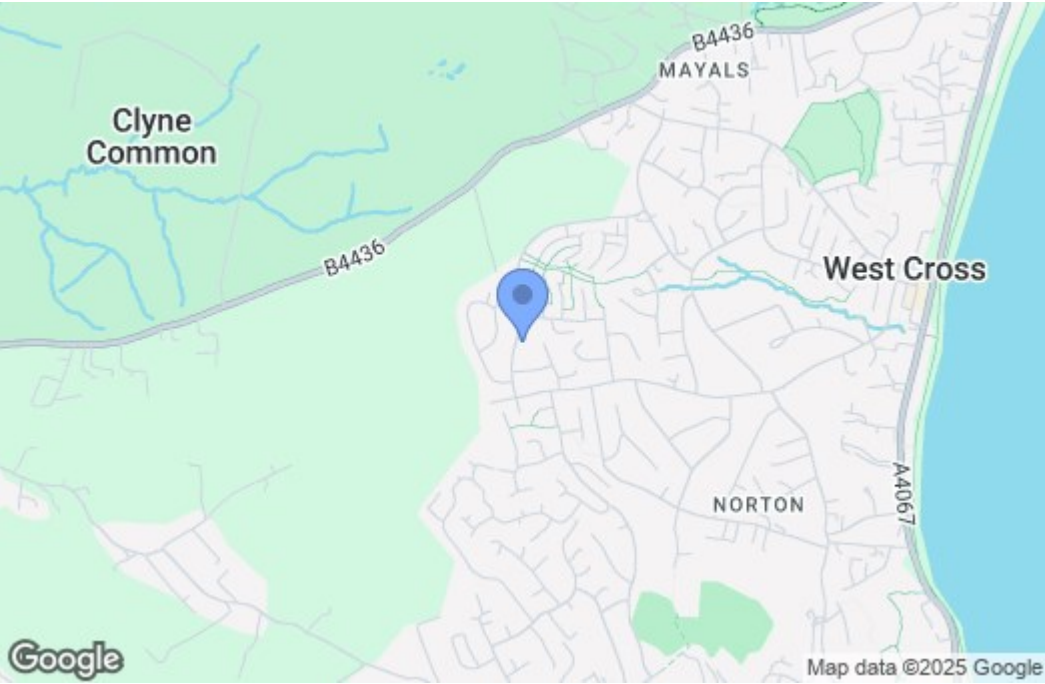


Total area: approx. 83.3 sq. metres (896.2 sq. feet)

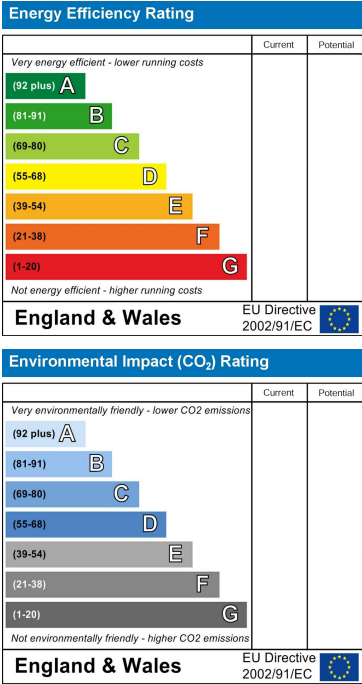
Astleys use all reasonable endeavours to supply accurate property information in line with the consumer protection from unfair trading regulations 2008. These property details do not constitute any part of the offer or contract and all measurements are approximate. The matters in these particulars should be independently verified by prospective purchasers and it should not be assumed this property has all the necessary building regulations and planning permissions. Any heating, services and appliances have not been checked or tested. Floor plan is not to scale and is for illustrative purposes only.

Plan produced using PlanUp.

Area Map



Energy Efficiency Graph



These particulars, whilst believed to be accurate are set out as a general outline only for guidance and do not constitute any part of an offer or contract. Intending purchasers should not rely on them as statements of representation of fact, but must satisfy themselves by inspection or otherwise as to their accuracy. No person in this firms employment has the authority to make or give any representation or warranty in respect of the property.