



11 Heatherslade Close, Langland, Swansea, City & County Of Swansea, SA3 4HP

Offers Over £450,000

This spacious and versatile four-bedroom detached family home is set across three floors and offers an impressive floor area of 1,813 square feet. Enjoying a generous plot of 0.06 acres, the property benefits from partial sea views over Swansea Bay to the rear, adding a scenic backdrop to everyday living.

To the front of the home, there is private parking for up to three vehicles, providing convenience and practicality. Upon entering the property, the ground floor welcomes you with a well-appointed bathroom, cloakroom, and two comfortable bedrooms—ideal for guests or multi-generational living.

The lower ground floor is the heart of the home, offering a thoughtfully laid-out kitchen, a bright lounge, and a separate dining room—perfect for both entertaining and family gatherings. Upstairs on the first floor, you

Entrance

Via a frosted double-glazed PVC door with frosted double-glazed side panel into the porch,

Porch

Frosted glazed hardwood door with frosted glazed side panel into the hallway. Tiled floor.

Hallway



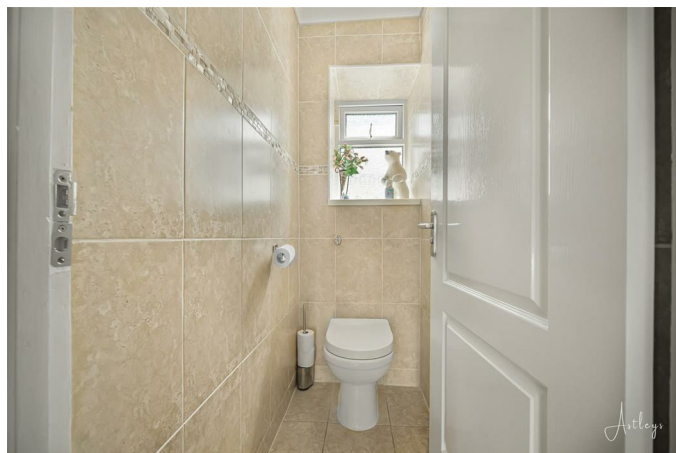
Stairs leading up to the first floor. Stairs leading down to the lower ground floor. Door to the bathroom. Door to the cloakroom. Doors to bedrooms three and four. Door to storage cupboard. Two radiators.

Bathroom 5'5" x 4'5" (1.67 x 1.36)



Frosted double-glazed window to the side. Suite comprising; bathtub with shower over. Wash hand basin. Tiled floor. Tiled walls. Chrome heated towel rail. Spotlights.

W/C 5'11" x 2'7" (1.81 x 0.79)



You have a frosted double-glazed window to the side. Low-level WC. Tiled floor. Tiled walls. Spotlights.

Bedroom Three 10'5" x 11'6" (3.19 x 3.53)



You have a set of double-glazed French doors to the front. Radiator. Doors to built-in wardrobes.

Bedroom Three



Bedroom Four



Bedroom Four 11'7" x 10'4" (3.54 x 3.16)



You have a double-glazed French doors to the front. Radiator. Doors to built-in wardrobes. Spotlights.

Lower Ground Floor

Dining Room 14'9" x 12'4" (4.52 x 3.77)



Opening to the lounge. Door to the kitchen. Two radiators. Double-glazed sliding door to the rear decked area.

Dining Room



Lounge



Lounge 14'9" x 11'5" (4.50 x 3.49)



Lounge



You have a set of double-glazed windows to the rear offering partial sea views of Swansea Bay and beyond. Radiator. Feature fireplace.

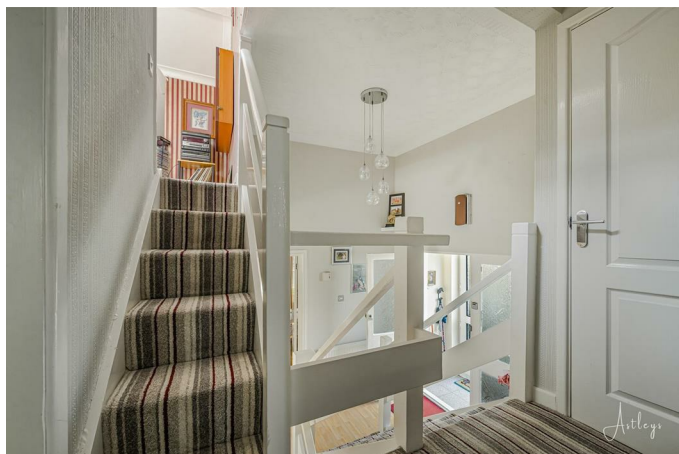
Kitchen 14'10" x 8'4" (4.54 x 2.55)



You have a frosted double-glazed PVC door to the side. Set of double-glazed windows to the rear. Kitchen is fitted with a range of base and wall units. Running work surface incorporating a stainless steel sink and drainer unit. Four ring gas hob with extractor hood over. Oven and grill under. Integral fridge. Integral freezer. Plumbing for washing machine. Breakfast bar. Radiator. Tiled floor. Spotlights.

First Floor

Landing



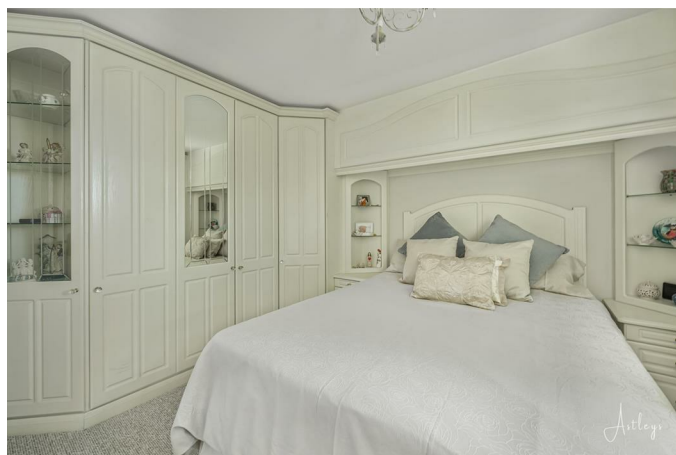
You have a door to storage cupboard. Doors to bedrooms one and two. Stairs leading up to the attic room.

Bedroom One 11'8" x 12'3" (3.56 x 3.74)



You have a set of double-glazed windows to the rear offering sea views of Swansea Bay and beyond. Radiator. Doors to built-in wardrobes.

Bedroom One



Bedroom Two 8'5" x 14'9" (2.57 x 4.50)

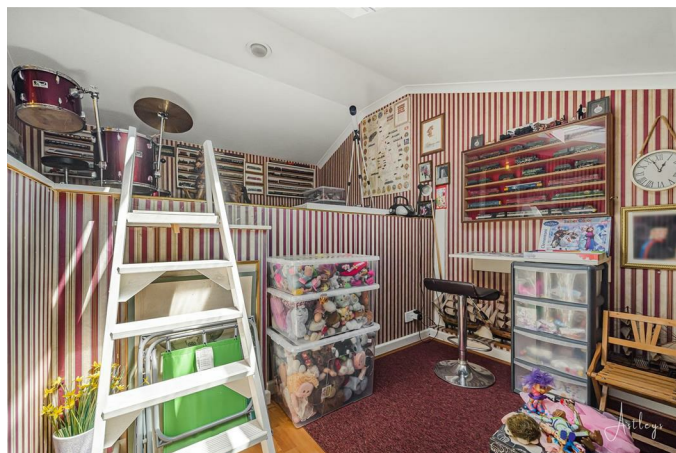


You have a set of double-glazed windows to the rear offering partial sea views of Swansea Bay and beyond. Radiator. Doors to built-in wardrobes. Spotlights.

Bedroom Two



Attic Room 11'11" x 10'4" (3.65 x 3.16)



Velux roof window to the front. Doors to eaves storage.

Attic Room



External

Aerial Aspect



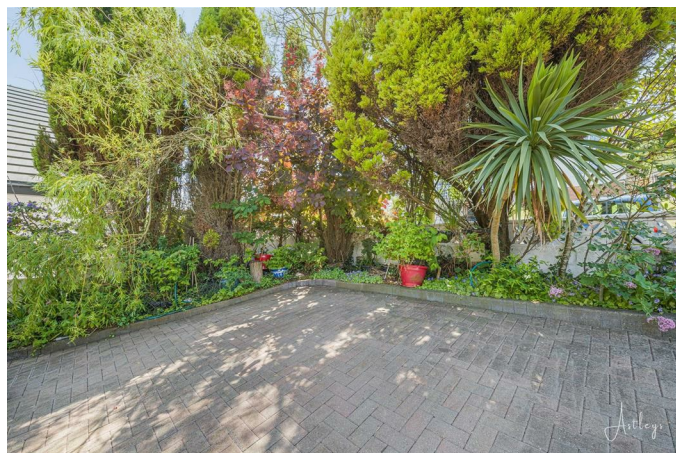
Aerial Aspect



Aerial Aspect

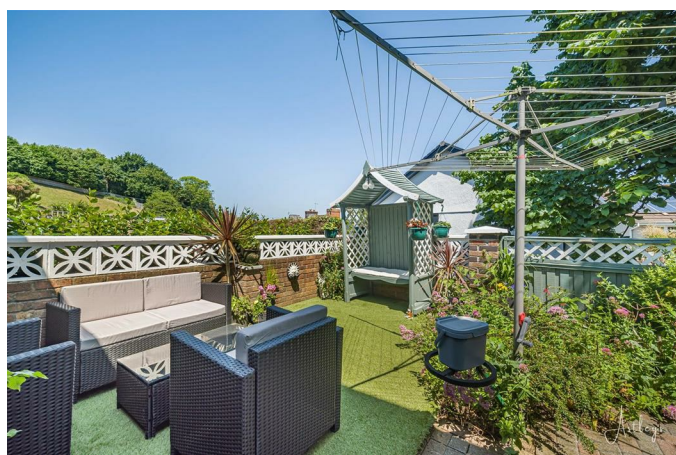


Front



You have private driveway parking for two to three vehicles. Side access to the rear.

Rear



You have a block paviour area with room for tables and chairs. Raised decked seating area. Detached garden shed.

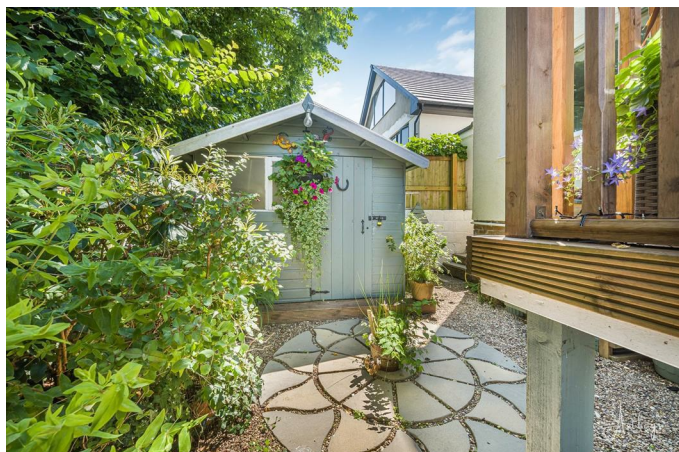
Rear



Rear



Rear



Rear



Rear



Services

Mains electric. Mains sewerage. Mains water. Mains Gas. Broadband type - full fibre. Mobile phone coverage available with EE, Three, O2 & Vodafone.

Council Tax Band

Council Tax Band - F

Tenure

Freehold.

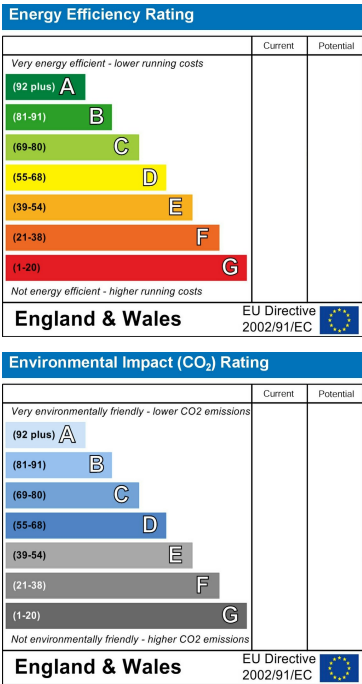
Floor Plan



Area Map



Energy Efficiency Graph



These particulars, whilst believed to be accurate are set out as a general outline only for guidance and do not constitute any part of an offer or contract. Intending purchasers should not rely on them as statements of representation of fact, but must satisfy themselves by inspection or otherwise as to their accuracy. No person in this firms employment has the authority to make or give any representation or warranty in respect of the property.