



16 Wimblewood Close, West Cross, Swansea, City & County Of Swansea, SA3 5LQ

Offers Over £200,000

Discover your perfect first home in the heart of West Cross! This charming three-bedroom terraced property on Wimblewood Close offers comfortable living spaces and a convenient layout for modern family life.

On the ground floor, you are welcomed by a hallway that leads to all main rooms. There is a cloakroom conveniently located for guests and everyday use, and a well-appointed kitchen with ample storage and worktop space. The spacious and bright lounge is perfect for relaxing and entertaining, while the third bedroom on this level can serve as a guest bedroom, home office, or playroom.

The lower ground floor comprises a generously sized master bedroom with space for wardrobes and furnishings, a comfortable second bedroom ideal for children or guests, a bathroom with contemporary fixtures and fittings.

Entrance

Via a frosted double glazed PVC door into the hallway.

Hallway



With a door to the cloakroom. Double glazed window to the front. Door to bedroom three. Door to built in storage cupboard. Radiator. Door to the lounge. Stairs leading down to the lower ground floor. Frosted double glazed window to the rear.

Hallway



Cloakroom 7'0" x 3'10" (2.148 x 1.175)

You have a frosted double glazed window to the front. WC. Wash hand basin.

Bedroom Three 8'5" x 10'8" (2.589 x 3.266)



You have a set of double glazed windows to the front. Radiator. Door to built in wardrobe.

Bedroom Three



Lounge 14'1" x 17'7" (4.312 x 5.373)

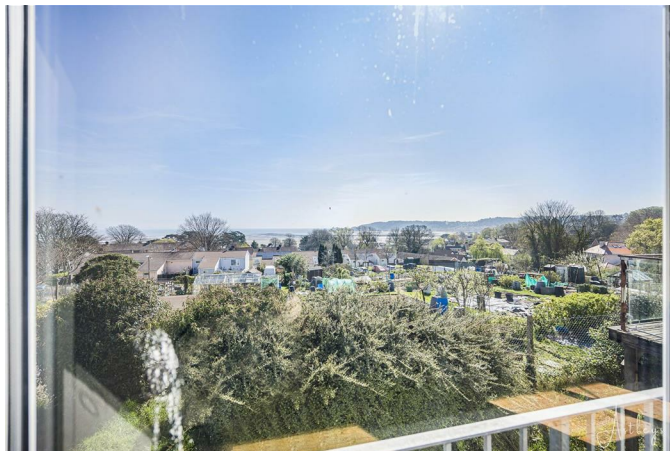


You have a set of double glazed windows to the rear and a set of double glazed sliding doors to the rear Juliet balcony which offer breath-taking sea views of Mumbles Bay and beyond, views of Mumbles Pier, views of Mumbles Lighthouse. Radiator. Feature fireplace. Door to the kitchen.

Lounge



View



Kitchen 9'11" x 7'4" (3.024 x 2.252)

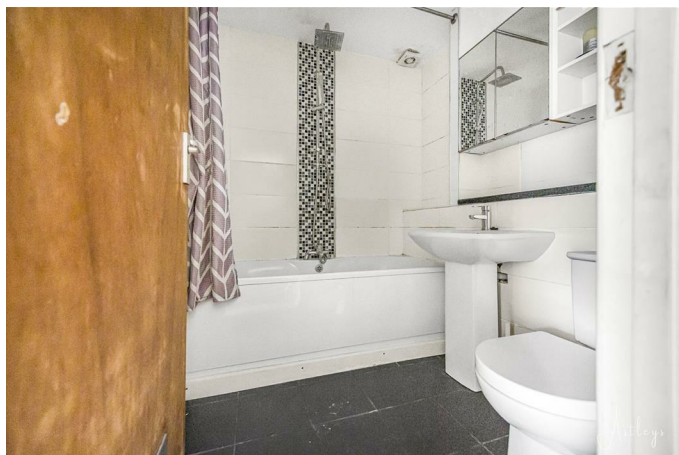


You have a double glazed window to the front. The kitchen is fitted with a range of base and wall units, running work surface incorporating a one and a half bowl stainless steel sink and drainer unit. Four ring gas hob with oven and grill under. Extractor hood over. Space for dishwasher. Space for American style fridge freezer.

Lower Ground Floor

You have a door to understairs storage. Door to the bathroom. Doors to bedrooms. Door to storage cupboard.

Bathroom 6'5" x 6'7" (1.966 x 2.011)



Suite comprising; bathtub with shower over. WC. Wash hand basin. Tiled floor. Tiled walls. Radiator.

Bedroom One 10'6" x 9'9" (3.205 x 2.975)

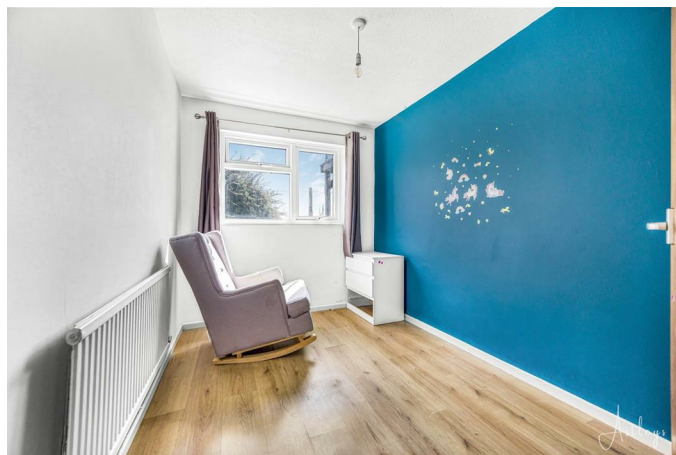


With a set of double glazed windows to the rear. Radiator. Door to built in wardrobe.

Bedroom One



Bedroom Two 10'3" x 7'5" (3.148 x 2.284)

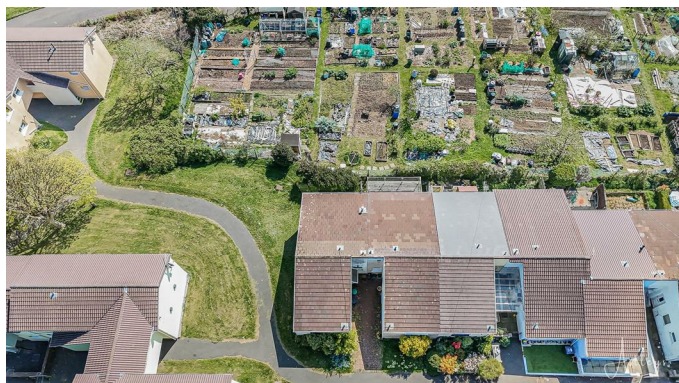


You have a set of double glazed windows to the rear and a radiator.

Services

Mains electric. Mains sewerage. Mains water. Mains Gas. Broadband type - ultrafast fibre. Mobile phone coverage available with EE, O2, Three & Vodafone.

Aerial Aspect



Council Tax Band

Council Tax Band - D

Tenure

Freehold.

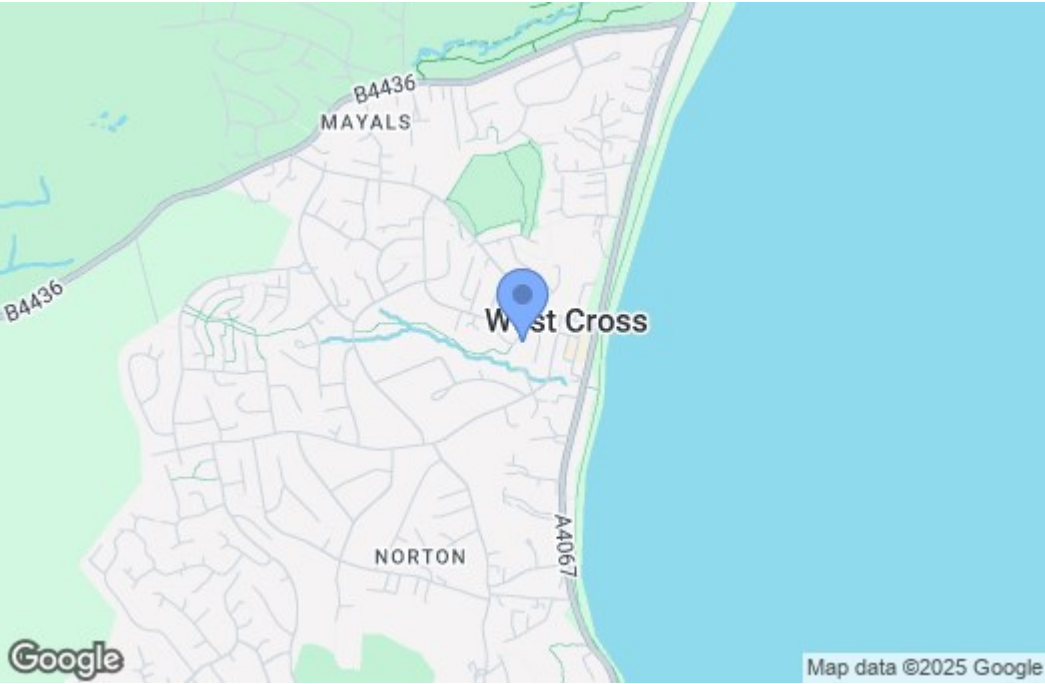
Floor Plan



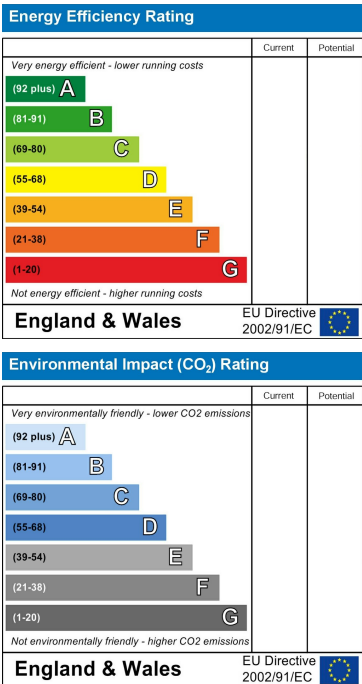
Total area: approx. 94.1 sq. metres (1012.5 sq. feet)

Astleys use all reasonable endeavours to supply accurate property information in line with the consumer protection from unfair trading regulations 2008. These property details do not constitute any part of the offer or contract and all measurements are approximate. The matters in these particulars should be independently verified by prospective purchasers and it should not be assumed the property has all the necessary building regulations and planning permissions. Any heating, services and appliances have not been checked or tested. This plan is not to scale and is for illustrative purposes only.
Plan produced using Planity.

Area Map



Energy Efficiency Graph



These particulars, whilst believed to be accurate are set out as a general outline only for guidance and do not constitute any part of an offer or contract. Intending purchasers should not rely on them as statements of representation of fact, but must satisfy themselves by inspection or otherwise as to their accuracy. No person in this firms employment has the authority to make or give any representation or warranty in respect of the property.