



3 Ambleside, West Cross, Swansea, City & County Of Swansea, SA3 5LN

£190,000

Welcome to this three-bedroom mid link terrace property, just a stone's throw away from the vibrant village of Mumbles. With no onward chain, this residence offers an enticing opportunity for a smooth transition into your new home.

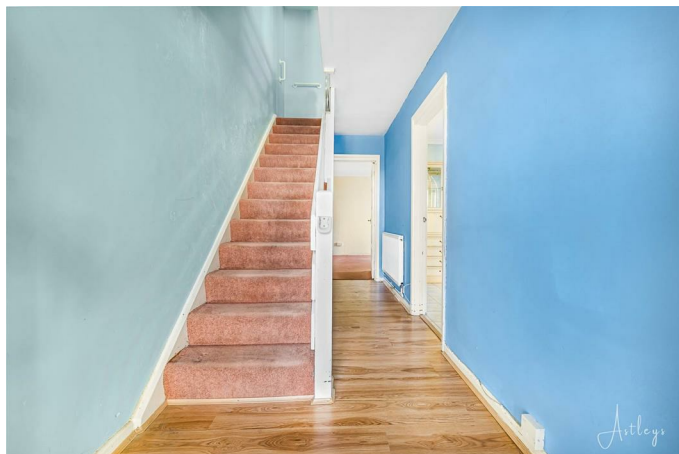
Spanning across a floor area of 969.7 square feet and nestled on a plot size of 0.02 acres.

The accommodation comprises; hallway, lounge, dining room, kitchen, utility room and cloakroom on the ground floor.

Entrance

Via a frosted double-glazed PVC door into the hallway.

Hallway



With stairs to the first floor. Radiator. Door to the dining room. Door to the lounge.

Lounge 11'0" x 15'10" (3.372 x 4.835)



You have a set of double-glazed French patio doors to the side leading out to the garden area. Radiator. Feature fireplace.

Lounge



Dining Room 9'7" x 9'5" (2.940 x 2.895)



You have a set of double-glazed windows to the side. Radiator. Opening to the kitchen.

Dining Room



Kitchen 7'5" x 10'3" (2.279 x 3.127)



You have a set of double-glazed windows to the front. Opening to the utility area. The kitchen has a range of base and wall units. Running work surface incorporating a stainless steel sink and drainer unit. Space for cooker. Space for dishwasher. Radiator.

Kitchen



Inner Hall

You have a door to the cloakroom. Frosted double-glazed PVC door to the garden. Door to the utility room.

Cloakroom 4'3" x 3'9" (1.317 x 1.164)

You have a frosted double-glazed window to the front. WC. Wash hand basin. Radiator.

Utility Room 8'9" x 5'7" (2.684 x 1.708)

You have a frosted double-glazed window to the front. Plumbing for washing machine. Space for American style fridge freezer.

First Floor

Landing

You have loft access. Door to storage cupboard. Door to the bathroom. Doors to bedrooms.

Bedroom One 8'9" x 15'8" (2.674 x 4.782)



You have a set of double-glazed windows to the side. Radiator.

Bedroom One



Bedroom Two 9'4" x 9'9" (2.869 x 2.987)



You have a set of double-glazed windows to the front. Radiator. Door to built-in storage cupboard.

Bedroom Two



Bedroom Three 9'5" x 8'2" (2.881 x 2.492)



You have a set of double-glazed windows to the front. Radiator. Door to built-in storage cupboard.

Bedroom Three



Shower Room 6'5" x 5'8" (1.964 x 1.735)



You have a frosted double-glazed window to the front. Suite comprising; walk-in shower. WC. Wash hand basin. Radiator. Tiled walls. Extractor fan.

External



You have a patio seating area with ample room for tables and chairs bordered by fencing.

External



Another Aspect



External



Aerial Aspect



Another Aspect



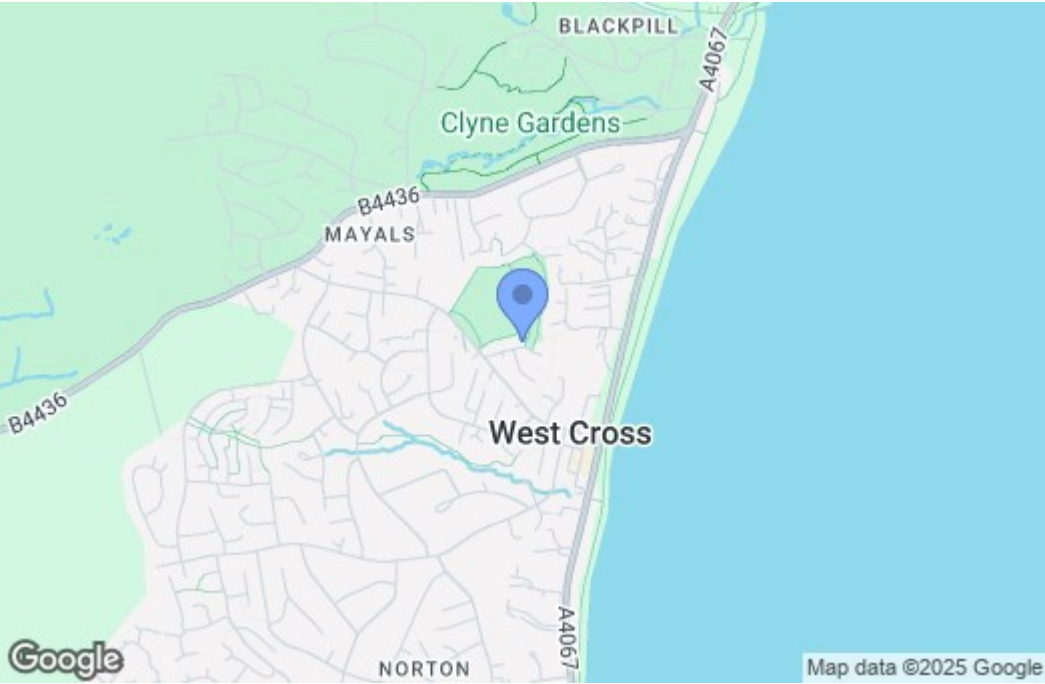
Aerial Aspect



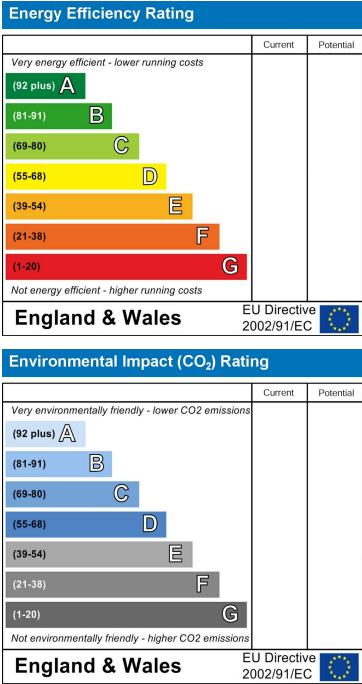
Floor Plan



Area Map



Energy Efficiency Graph



These particulars, whilst believed to be accurate are set out as a general outline only for guidance and do not constitute any part of an offer or contract. Intending purchasers should not rely on them as statements of representation of fact, but must satisfy themselves by inspection or otherwise as to their accuracy. No person in this firms employment has the authority to make or give any representation or warranty in respect of the property.