

20 Chestnut Avenue, West Cross, Swansea, City & County Of Swansea, SA3 5NL

Offers Over £450,000

Welcome to this stunning four-bedroom detached property with sea views of Swansea Bay to the rear. Situated in a prime location, this home offers the perfect blend of comfort, elegance, and tranquillity. Sold with no onward chain. Impressive plot size of 0.07 acres.

As you step inside, you'll immediately appreciate the spaciousness and natural light that flows throughout. The ground floor comprises; cloakroom, lounge, sitting room, kitchen/breakfast room and utility room.

Upstairs, you'll discover four generously sized bedrooms, each offering a tranquil haven for relaxation and rejuvenation. Bedroom two located at the rear of the property, benefits from the picturesque sea views, providing a serene backdrop to wake up to each morning. Bathroom and shower room complete this floor.

Entrance

Via a composite door into the hallway.

Hallway

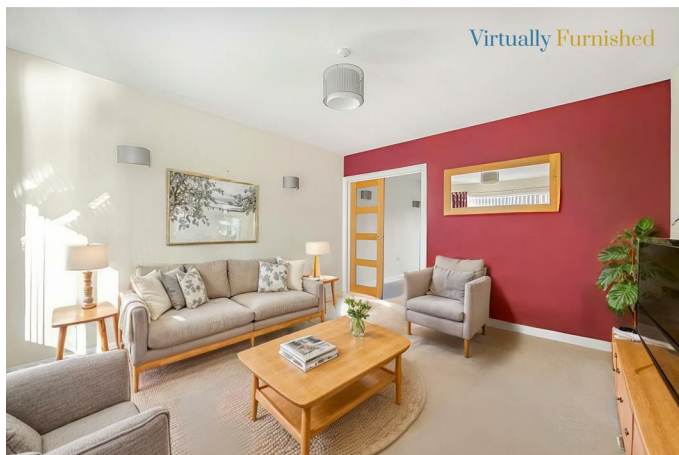


With stairs to the first floor. Door to cloakroom. Door to the lounge. Door to the open plan kitchen/breakfast room. Radiator,

Cloakroom 5'9" x 3'1" (1.768 x 0.940)

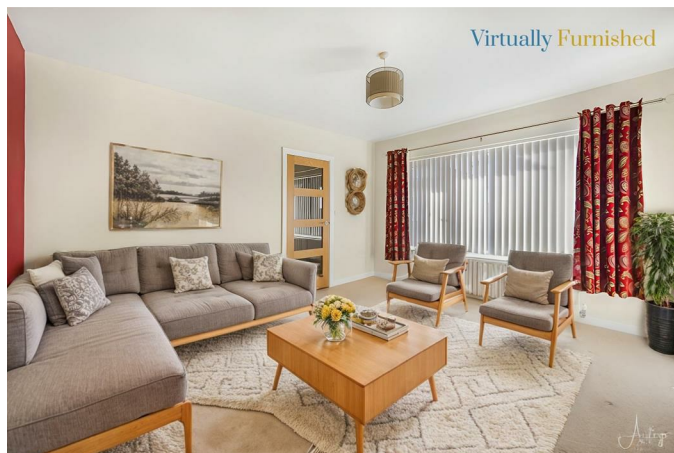
With a frosted double glazed window to the front. WC. Wash hand basin. Chrome heated towel rail. Tiled floor.

Lounge 13'11" x 12'3" (4.256 x 3.746)



With a set of double glazed windows to the front. Radiator. Set of doors to the open plan kitchen breakfast room.

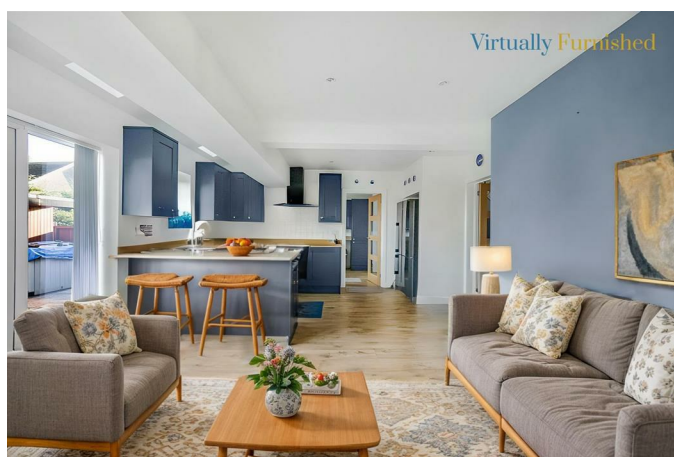
Lounge



Lounge

Lounge

Kitchen/Breakfast Room 15'0" x 20'1" (4.577 x 6.146)



With a set of double glazed French patio doors to the rear garden offering partial sea views. Double glazed window to the rear garden. Wall mounted radiator. Spotlights. Three Velux roof windows to the rear. Door to the utility room. The kitchen itself is fitted with a range of base and wall units. Running wood block work surface incorporating a one and a half bowl ceramic sink with mixer tap over. Five ring gas hob with extractor hood over. Oven and grill under. Space for dishwasher. Space for American-style fridge freezer.

Kitchen/Breakfast Room



Kitchen/Breakfast Room



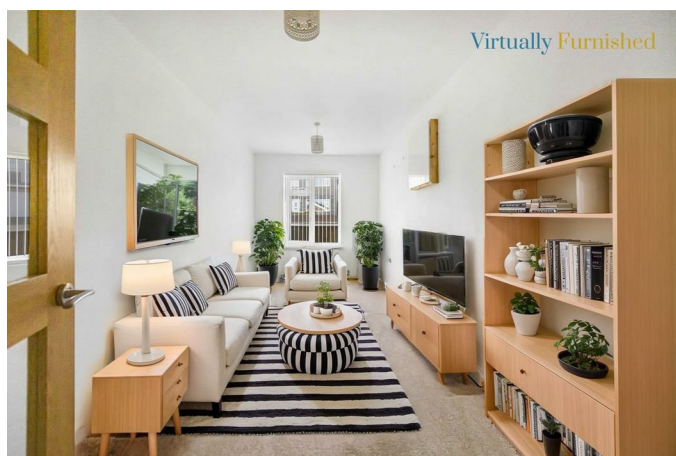
Kitchen/Breakfast Room

Utility Room 7'1" x 8'0" (2.160 x 2.441)



With a door to the sitting room. Frosted double glazed PVC door to the rear. Double glazed window to the rear. Running wood block work surface with a sink. Plumbing for washing machine. Space for tumble dryer. Radiator. Spotlights.

Sitting Room 18'1" x 8'0" (5.523 x 2.448)



with a double glazed window to the front and a radiator,

First Floor

Landing

You have loft access, door to airing cupboard, door to storage cupboard, door to bathroom, door to shower room, doors to bedrooms,

Bathroom 8'1" x 7'6" (2.468 x 2.290)



With a frosted double glazed window to the rear. Beautifully appointed bathroom suite comprising; bathtub with oversized shower head above. WC. Wash hand basin. Spotlights. Chrome heated towel rail.

Bathroom



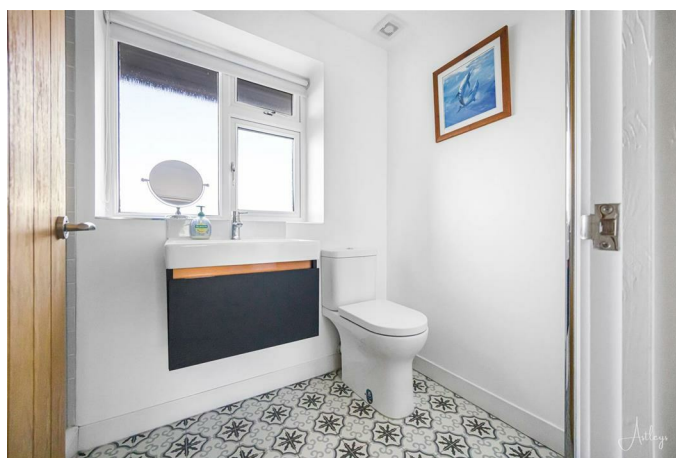
Bathroom

Shower Room 4'8" x 8'2" (1.433 x 2.497)

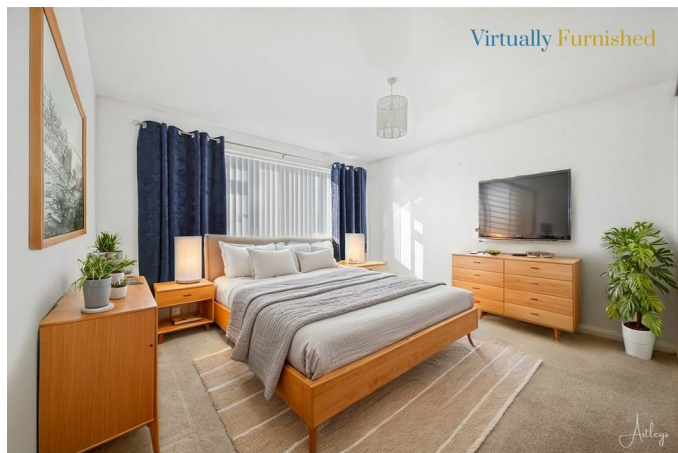


With a set of frosted double glazed windows to the rear. A beautifully appointed suite comprising a large walk-in shower cubicle with oversized shower head above. WC. Wash hand basin. Chrome heated towel rail. Tiled floor. Extractor fan. Spotlights.

Shower Room

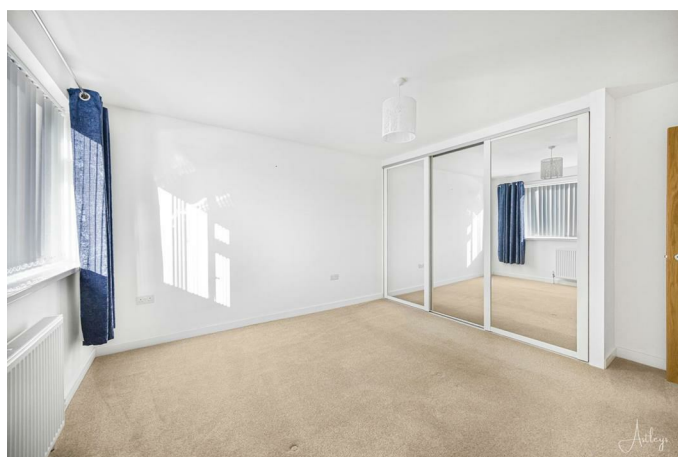


Bedroom One 13'2" x 12'6" (4.018 x 3.822)



With a set of double glazed windows to the front. Radiator. Sliding doors to built-in wardrobes.

Bedroom One

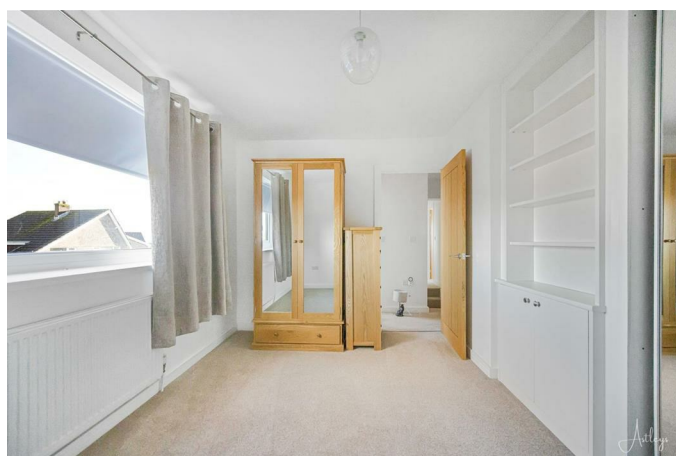


Bedroom Two 9'0" x 12'7" (2.747 x 3.860)



With a set of double glazed windows to the rear offering sea views of Swansea Bay and beyond, partial views of Mumbles lighthouse. Radiator. Sliding doors to built-in wardrobes.

Bedroom Two



View

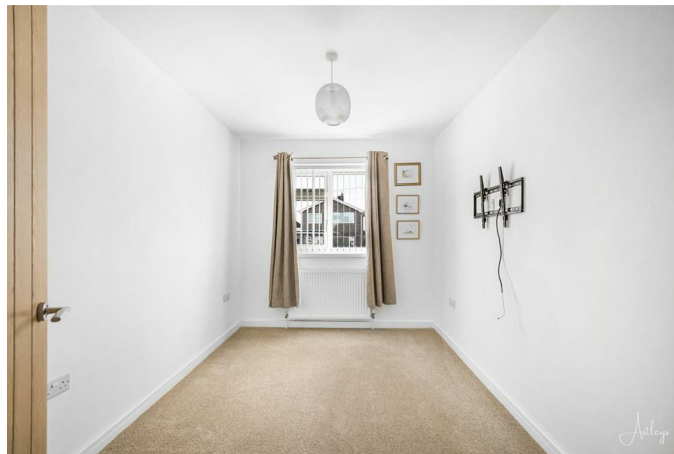


Bedroom Three 10'2" x 7'6" (3.099 x 2.293)



With a double glazed window to the front. Radiator. Opening to storage area.

Bedroom Four 11'0" x 8'1" (3.362 x 2.485)



With a double glazed window to the front and a radiator.

Bedroom Four

External

Aerial Aspect



Aerial Aspect



Rear Garden



Another Aspect



Rear Garden



Front

You have a lawned garden. Driveway parking for two vehicles. Side access to the rear.

Rear

You have a low maintenance rear garden comprising a raised patio seating area with ample room for tables and chairs which in turn leads down to a lawned garden home to a variety of flowers and shrubs. Door to the storage area. A set of doors to the outbuilding.

Outbuilding



With spotlights and two wall-mounted electric radiators. A versatile room that could be used for a variety of purposes such as for storage, an office or a gym.

Services

Mains Gas. Mains Water and sewerage. Broadband - ultrafast available. Phone Signal available with multiple providers.

Council Tax Band

Council Tax Band - E

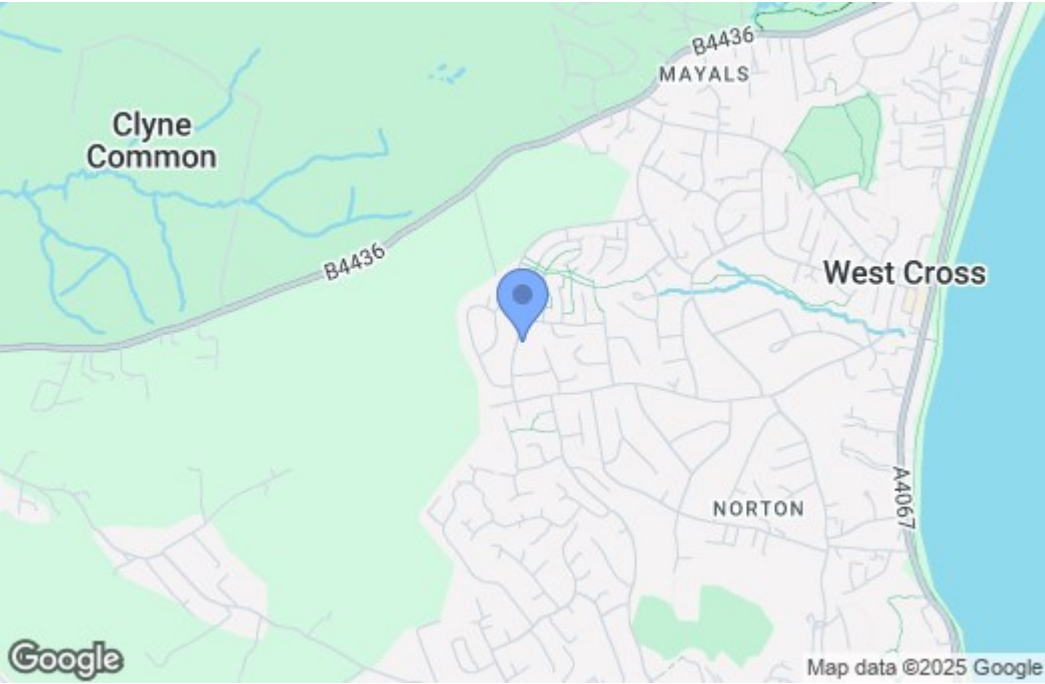
Tenure

Freehold.

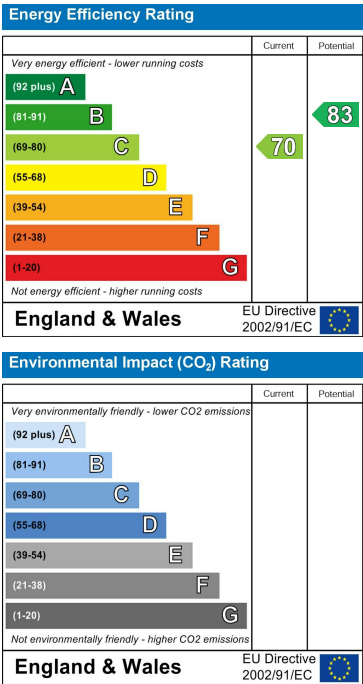
Floor Plan



Area Map



Energy Efficiency Graph



These particulars, whilst believed to be accurate are set out as a general outline only for guidance and do not constitute any part of an offer or contract. Intending purchasers should not rely on them as statements of representation of fact, but must satisfy themselves by inspection or otherwise as to their accuracy. No person in this firms employment has the authority to make or give any representation or warranty in respect of the property.