



63 Highmead Avenue, Newton, Swansea, City & County Of Swansea, SA3 4TY

£650,000

Situated in the desirable Newton area, this beautifully presented four-bedroom detached family home falls within the sought-after Bishopston Comprehensive School catchment area and is just a short distance from the vibrant village of Mumbles and the scenic Langland Bay, this property offers the perfect blend of convenience and tranquility.

The home features a spacious and modern open-plan kitchen, perfect for family gatherings and entertaining. There are two inviting reception rooms providing ample living space. The property boasts four well-appointed bedrooms, including a master bedroom with an en-suite, as well as a stylish family bathroom.

An integral double garage and a driveway with parking for multiple vehicles ensure plenty of space for cars and storage. The rear garden is beautifully presented, offering a low-maintenance retreat for relaxation and

Hallway 13'10" x 5'11" (4.22 x 1.82)



Stairs leading to the first floor, porcelain tiled flooring, and a radiator. Doors leading to the cloakroom, lounge, and kitchen/Dining room.

Cloakroom 5'1" x 4'3" (1.57 x 1.32)

This room features a double-glazed frosted window to the front, a two-piece suite with a low-level W.C. and a pedestal wash hand basin, wall-mounted chrome towel heater, tiled walls, porcelain tiled flooring.

Living Room 14'10" x 22'4" (4.53 x 6.83)



The spacious lounge has a double-glazed window to the front that floods the room with natural light. It features a contemporary wall-mounted fireplace, two radiators, wood effect flooring, and a coved ceiling with spotlights. French doors lead into the kitchen/breakfast area.

Living Room



Living Room



Kitchen/Dining Room 25'3" x 11'8" (7.71 x 3.56)



This expansive space includes a double-glazed window and door to the rear. It is fitted with a range of wall and base units with complementary work surfaces, a sink and drainer unit with a mixer tap and instant hot water tap, and a coordinating breakfast bar with space for seating. Integrated appliances include a dishwasher, fridge, freezer, microwave, an eye-level double oven, and a four-ring electric hob with a contemporary angled extractor hood. The area provides ample space for a large dining table, features porcelain tiled flooring, and has a coved ceiling with spotlights. There is also a door leading to the double garage, with water and power and plumbing for a washing machine. Opening to the sitting room.

Kitchen/Dining Room



Kitchen/Dining Room



Kitchen/Dining Room



Sitting Room 20'8" x 10'7" (6.3 x 3.24)



A beautiful, light filled room with two Velux windows and two sets of patio doors leading to the rear garden. It features a multifuel burner, two contemporary radiators, built-in speakers, and porcelain tiled flooring.

Sitting Room



Landing

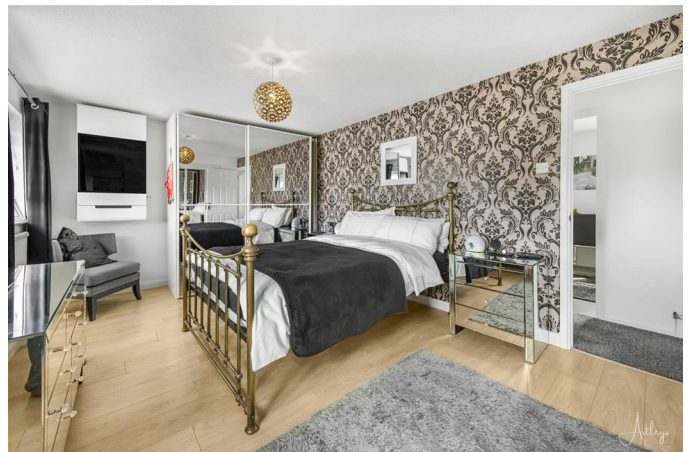
The landing has a built-in airing cupboard housing the hot water tank, access to the loft space, and a radiator. It leads to the bedrooms and bathroom.

Bedroom One 15'11" x 10'8" (4.86 x 3.27)



With two double-glazed windows to the front, built-in wardrobes, a radiator, and wood effect flooring. Door to en-suite bathroom.

Bedroom One

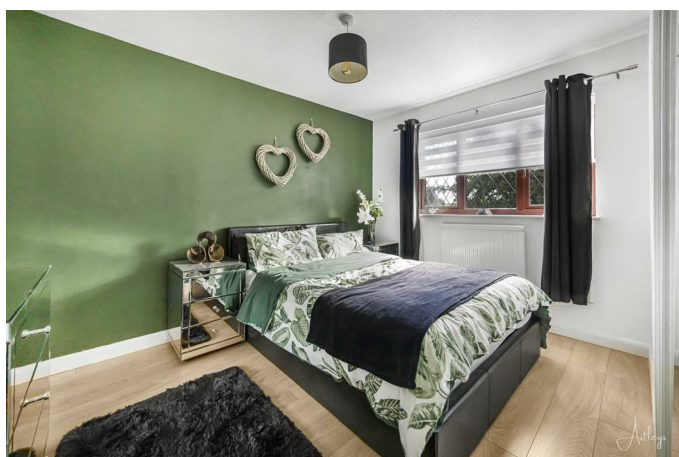


En-Suite 11'4" x 5'2" (3.46 x 1.59)



The en-suite has a double-glazed frosted window to the front and a three-piece suite consisting of a low-level W.C., a wash hand basin set over a vanity unit, and a bath with a shower over. Additional features include a wall-mounted chrome towel heater and spotlights on the ceiling.

Bedroom Two 11'6" x 8'6" (3.51 x 2.61)



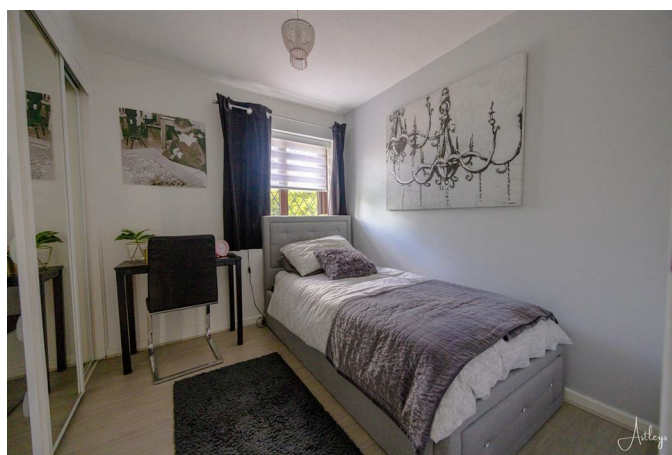
Double-glazed window to the rear, built-in wardrobes, and wood effect flooring.

Bedroom Three 8'9" x 7'5" (2.67 x 2.28)



This bedroom features a double-glazed window to the rear, a radiator, and wood effect flooring.

Bedroom Four 11'2" x 8'7" (3.42 x 2.62)



With a double-glazed window to the rear, built-in wardrobes, a radiator, and wood effect flooring.

Bathroom 7'10" x 5'3" (2.39 x 1.62)



The bathroom features a double-glazed frosted window to the side and a three-piece suite with a low-level W.C. with a concealed cistern, a wash hand basin set within a vanity unit, and a walk-in shower. Additional features include a wall-mounted chrome towel heater, tiled walls, porcelain tiled flooring, and spotlights.

Front Garden

The front of the property features a spacious block-paved driveway offering ample off-road parking and a well-maintained front lawn

Rear Garden



The rear garden includes a paved patio terrace, ideal for al fresco dining or entertaining. The remainder of the garden is laid with astroturf for easy maintenance. There is a large storage shed located in the corner, and

the garden is fully enclosed, ensuring a high degree of privacy.

Rear Garden



Rear Garden



Rear Garden



Garage

A double garage provides parking and has water and power supply with plumbing for a washing machine.

Services

Mains Gas. Mains Water and sewerage. Broadband - Ultrafast available. Phone Signal available with multiple providers.

Aerial



Aerial

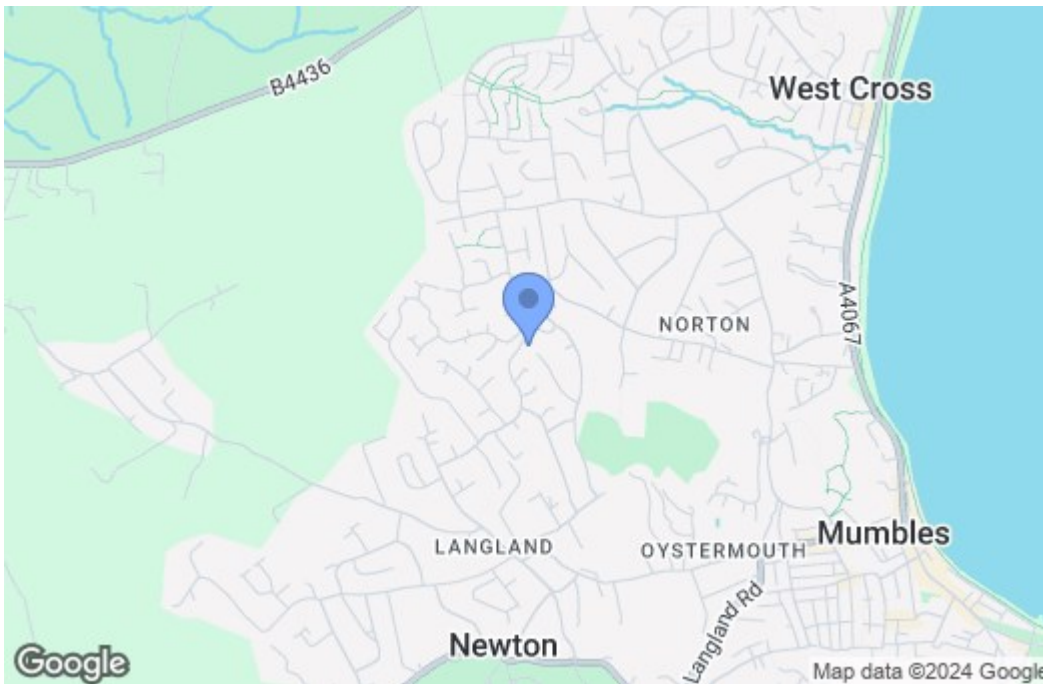
Floor Plan



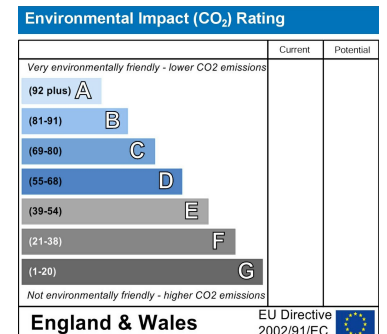
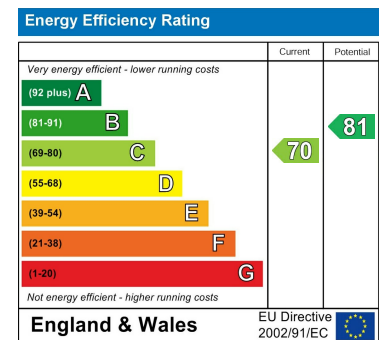
Total area: approx. 178.0 sq. metres (1916.4 sq. feet)

Astleys use all reasonable endeavours to supply accurate property information in line with the consumer protection from unfair trading regulations 2008. These property details do not constitute any part of the offer or contract and all measurements are approximate. The notes to these particulars should be independently verified by prospective purchasers and it should not be assumed that property has all the necessary building regulations and planning permission. Any heating, services and appliances have not been checked or noted. These plans are not to scale and are for illustrative purposes only.
Plan produced using FloorPlan.

Area Map



Energy Efficiency Graph



These particulars, whilst believed to be accurate are set out as a general outline only for guidance and do not constitute any part of an offer or contract. Intending purchasers should not rely on them as statements of representation of fact, but must satisfy themselves by inspection or otherwise as to their accuracy. No person in this firm's employment has the authority to make or give any representation or warranty in respect of the property.