



## 38 Linkside Drive, Southgate, Swansea, City & County Of Swansea, SA3 2BR

**£325,000**

Nestled in the heart of Southgate, this spacious three-bedroom semi-detached property presents a fantastic opportunity for those looking to create their dream home. Although the property requires updating throughout, it offers massive potential to add your personal touch and modernize to your taste.

The accommodation includes a welcoming porch leading to a spacious hallway, a comfortable lounge perfect for family gatherings, and a functional kitchen awaiting your modernization ideas. There is a family bathroom and a separate W/C, along with three well-proportioned bedrooms. Additionally, there is an attic room offering versatile space for an office, playroom, or extra bedroom.

Externally, the front of the property features private driveway parking for one vehicle leading to the garage, and a low-maintenance gravelled garden adorned with a variety of flowers, trees, and shrubs. At the rear,



### Entrance

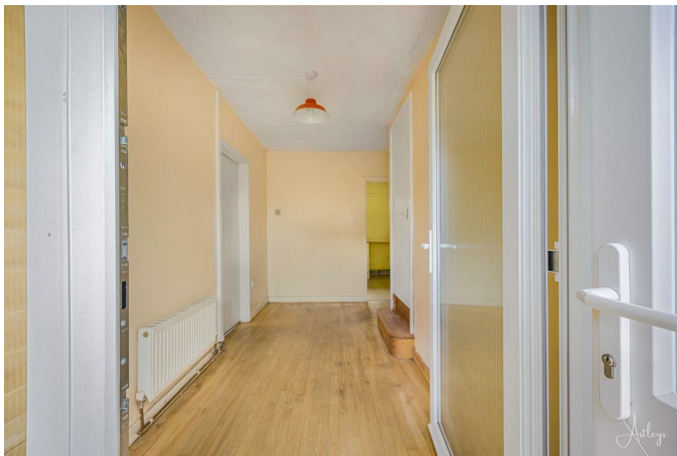
Via a double glazed PVC door into the porch.

### Porch



With a frosted double glazed side panel into the hallway. Tiled floor.

### Hallway



With stairs leading up the attic room. Door to the lounge. Door to the kitchen. Door to the bathroom. Door to the w/c. Doors to bedrooms. Radiator.

### Hallway



### Lounge 23'5" x 11'7" (7.157 x 3.554 )



With a set of double glazed windows to the front. Double glazed windows to the rear. Two radiators. Feature fireplace.

## Lounge



**Kitchen 8'5" x 10'6" (2.575 x 3.217 )**



With a double glazed PVC door to the rear. Double glazed window to the rear. Radiator. The kitchen is fitted with a range of base and wall units, running work surface incorporating a stainless steel sink and drainer unit. Space for cooker. Plumbing for washing machine. Space for fridge/freezer.

## Kitchen



**Bathroom 7'9" x 5'1" (2.372 x 1.567 )**



With a set of frosted double glazed windows to the rear. Large walk in shower. Wash hand basin. Radiator.

**W/C 7'6" x 2'7" (2.289 x 0.812 )**

With a frosted double glazed window to the rear. W/C.

**Bedroom One 11'0" x 11'5" (3.368 x 3.498 )**



With a set of double glazed windows to the front. Radiator. Doors to built in wardrobes.

**Bedroom One**



**Bedroom Two 12'2" x 9'11" (3.724 x 3.035 )**



With a set of double glazed windows to the rear. Radiator. Doors to built in wardrobes.

**Bedroom Two**



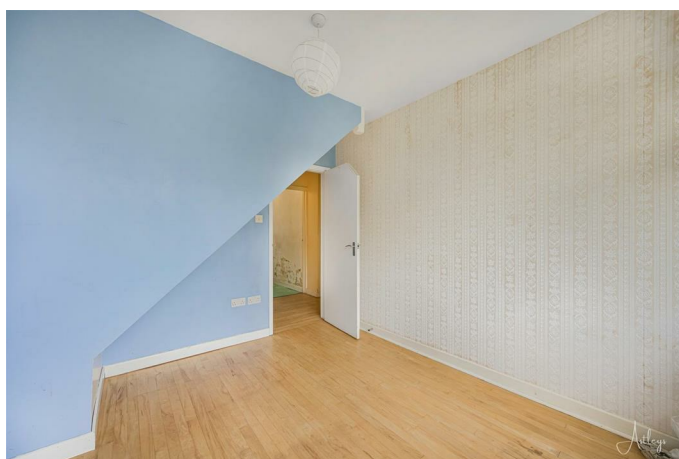


**Bedroom Three 10'11" x 8'10" (3.330 x 2.704 )**



With a set of double glazed windows to the front.  
Radiator.

**Bedroom Three**



**Attic Room 37'10" x 13'2" (11.54 x 4.025 )**

**External**

**Aerial Aspect**



**Aerial Aspect**





**Another Aspect**



**Front**



**Front**



**Front**



You have private driveway parking for one vehicle leading to the garage. Low maintenance graveled garden home to a variety of flowers, trees and shrubs.

**Front**





### Garage

Via 'up & over' door. Power and light. Frosted double glazed window to the rear.

### Rear



You have a patio seating area. Lawned garden home to a variety of flowers, trees and shrubs. Side access.

### Rear



### Rear



### Rear



### Rear



### **Services**

Mains electric. Mains sewerage. Mains water. Mains Gas. Broadband type - ultrafast fibre. Mobile phone coverage available with EE, O2, Three & Vodafone.

### **Council Tax Band**

Council Tax Band - E

### **Tenure**

Freehold.



## Floor Plan



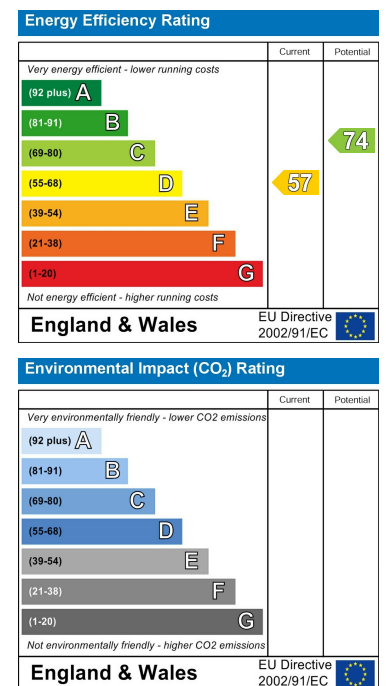
Total area: approx. 139.1 sq. metres (1497.8 sq. feet)

Astleys use all reasonable endeavours to supply accurate property information in line with the consumer protection from unfair trading regulations 2008. These property details do not constitute any part of the offer or contract and all measurements are approximate. The status in these particulars should be independently verified by prospective purchasers and it should not be assumed this property has all the necessary building regulations and planning permissions. Any building, services and regulations have not been checked or issued. Floor plan is not to scale and is for illustrative purposes only.  
View produced using Floorify.

## Area Map



## Energy Efficiency Graph



These particulars, whilst believed to be accurate are set out as a general outline only for guidance and do not constitute any part of an offer or contract. Intending purchasers should not rely on them as statements of representation of fact, but must satisfy themselves by inspection or otherwise as to their accuracy. No person in this firm's employment has the authority to make or give any representation or warranty in respect of the property.