



## 11 Gower Holiday Village, Scurlage, Gower, Swansea, City & County Of Swansea, £70,000

Nestled in the picturesque village of Scurlage, Gower, this charming two-bedroom semi-detached holiday chalet offers an exceptional opportunity for a tranquil coastal retreat. Currently operating as a successful holiday let, this property is conveniently situated near the renowned award-winning beaches of Rhossili Bay and Port Eynon. Located within the UK's first designated Area of Outstanding Natural Beauty, this chalet provides an enchanting escape surrounded by breathtaking landscapes.

The chalet is thoughtfully designed, providing a comfortable and inviting space for guests. With two bedrooms, it accommodates small families or groups, ensuring a restful stay. The open plan living area offers a welcoming ambiance, combining a cozy lounge, a dining area, and a fully equipped kitchen. The interior is bathed in natural light, creating a bright and airy atmosphere that complements the coastal surroundings.

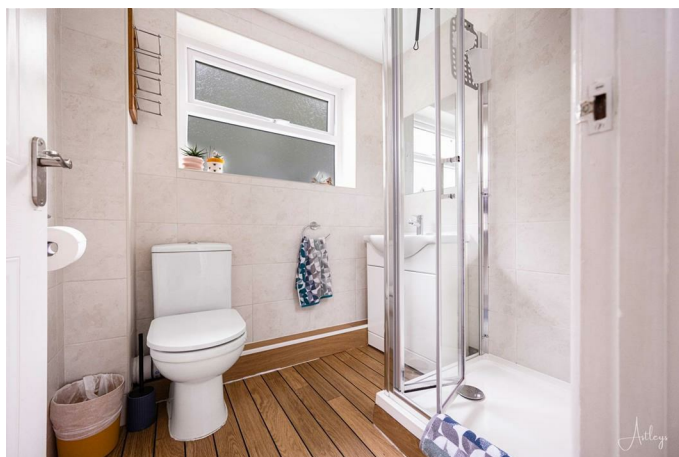
### Entrance

Via a frosted double glazed PVC door into the hall.

### Hall

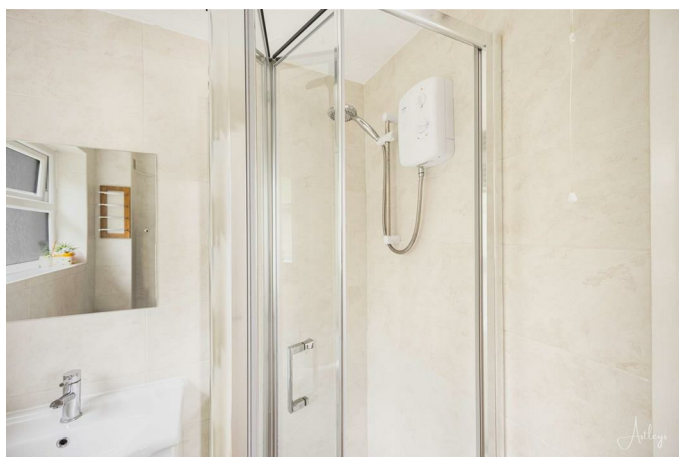
With a door to the bathroom. Door to the lounge/dining area. Door to storage cupboard.

### Bathroom 6'4" x 6'3" (1.931 x 1.925)



With a frosted double glazed window to the rear. Suite comprising; corner shower cubicle. Low level w/c. Wash hand basin. Tiled walls. Wall mounted electric heater.

### Bathroom



### Lounge/Dining Area 15'5" x 10'3" (4.722 x 3.142)



With a double glazed bay window to the front. Opening to the kitchen. Wall mounted electric radiator. Doors to bedrooms.

### Lounge/Dining Area



### Lounge/Dining Area



### Lounge/Dining Area



### Lounge/Dining Area



### Kitchen 8'9" x 9'7" (2.679 x 2.938)



With a double glazed window to the rear. The kitchen is fitted with a range of base and wall units, running work surface incorporating a one and a half bowl stainless steel sink and drainer unit. Four ring induction hob with extractor hood over. Neff oven & grill under. Integral fridge.

### Kitchen



### Kitchen



### Kitchen

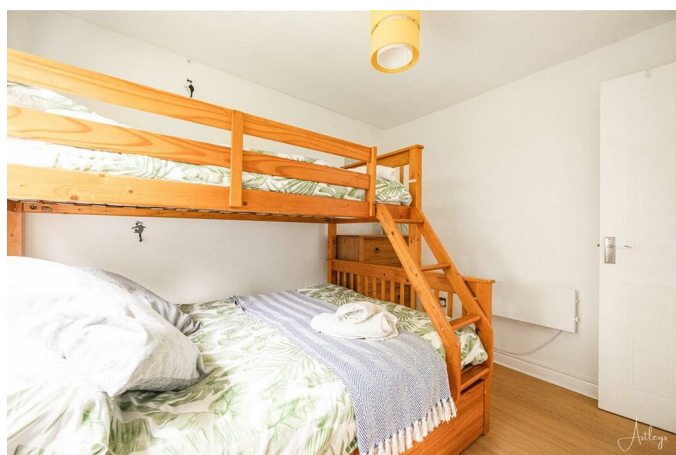


### Bedroom One 8'10" x 10'0" (2.695 x 3.055)



With a double glazed window to the rear. Wall mounted electric radiator.

### Bedroom One



### Bedroom Two 8'9" x 9'11" (2.691 x 3.047)



With a double glazed window to the front. Wall mounted electric radiator.

### Bedroom Two



### External

You have private driveway parking for two vehicles. Lawned area to the front & rear of the property.

### Aerial Aspect



### Aerial Aspect



## Aerial Aspect



## Another Aspect

### Rear



### Council Tax Band

Council Tax Band - A

Council Tax Estimate - £1,188

### Tenure

To be confirmed.

### Area

## Floor Plan



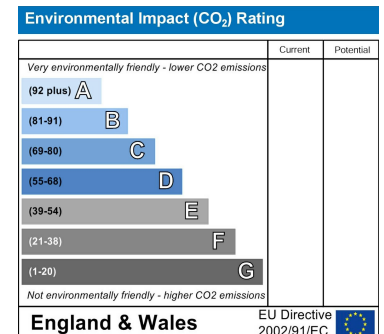
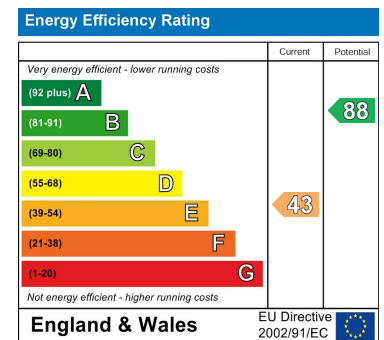
Total area: approx. 47.0 sq. metres (505.9 sq. feet)

Astleys use all reasonable endeavours to supply accurate property information in line with the consumer protection from unfair trading regulations 2008. These property details do not constitute any part of the offer or contract and all measurements are approximate. The matters in these particulars should be independently verified by prospective purchasers and it should not be assumed this property has all the necessary building regulations and planning permissions. Any heating, services and appliances have not been checked or tested. Floor plan is not to scale and is for illustrative purposes only.  
Plan produced using PlanUp.

## Area Map



## Energy Efficiency Graph



These particulars, whilst believed to be accurate are set out as a general outline only for guidance and do not constitute any part of an offer or contract. Intending purchasers should not rely on them as statements of representation of fact, but must satisfy themselves by inspection or otherwise as to their accuracy. No person in this firm's employment has the authority to make or give any representation or warranty in respect of the property.