



32 Wimblewood Close, West Cross, Swansea, City & County Of Swansea, SA3 5LQ

Offers Over £175,000

Discover your perfect first home in the heart of West Cross! This charming three-bedroom terraced property on Wimblewood Close offers comfortable living spaces and a convenient layout for modern family life.

On the ground floor, you are welcomed by a hallway that leads to all main rooms. There is a cloakroom conveniently located for guests and everyday use, and a well-appointed kitchen with ample storage and worktop space. The spacious and bright lounge is perfect for relaxing and entertaining, while the third bedroom on this level can serve as a guest bedroom, home office, or playroom.

The lower ground floor comprises a generously sized master bedroom with space for wardrobes and furnishings, a comfortable second bedroom ideal for children or guests, a bathroom with contemporary fixtures and fittings.

Entrance

Via frosted double glazed door into reception hall.

Hall

With a double glazed window to side, Velux roof window. Door to cloakroom, kitchen & lounge. Stairs to lower ground floor. Radiator, tiled floor.

Cloakroom 5'3" x 3'10" (1.617 x 1.189)

With a frosted double glazed window to side, tiled floor, low level w/c, corner wash hand basin.

Kitchen 17'0" x 8'5" (5.203 x 2.570)



With double glazed window to front. Well appointed kitchen is fitted with a range of base and wall units, running work surface incorporating stainless steel sink and drainer unit with mixer tap over, four ring gas hob with oven & grill under, extractor hood over. Integral fridge. Integral freezer. Plumbing for washing machine.

Kitchen



Kitchen



Lounge 17'7" x 14'4" (5.364 x 4.383)

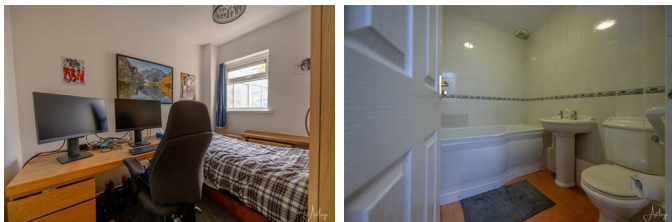


With two double glazed windows to rear overlooking woodland, electric fire set within fireplace on tiled hearth, two radiators.

Lounge



Bedroom Three 9'8" x 7'4" (2.969 x 2.249)



A versatile room currently used as a study with double glazed window to front, radiator, loft access.

Lower Ground Floor

With opening to under stairs storage space, doors to bedrooms & bathroom, door to airing cupboard.

Bedroom One 11'6" x 9'8" (3.511 x 2.969)



With double glazed patio door & windows to rear, radiator, door to built in wardrobe.

Bedroom One



Bedroom Two 10'5" x 7'6" (3.185 x 2.288)



With double glazed window to rear, radiator.

Bathroom 6'9" x 6'2" (2.077 x 1.886)

With low level w/c, pedestal wash hand basin, bathtub with shower over, tiled floor, tiled walls, chrome heated towel rail.

External

To the front you have a front garden bordered by wall. Pathway leading to front door. To the rear you have a lawned garden.

Rear



Rear



Front



Services

Mains electric. Mains sewerage. Mains water. Mains Gas. Broadband type - ultrafast fibre. Mobile phone coverage available with EE, O2, Three & Vodafone.

Aerial



Aerial



Council Tax Band

Council Tax Band - D

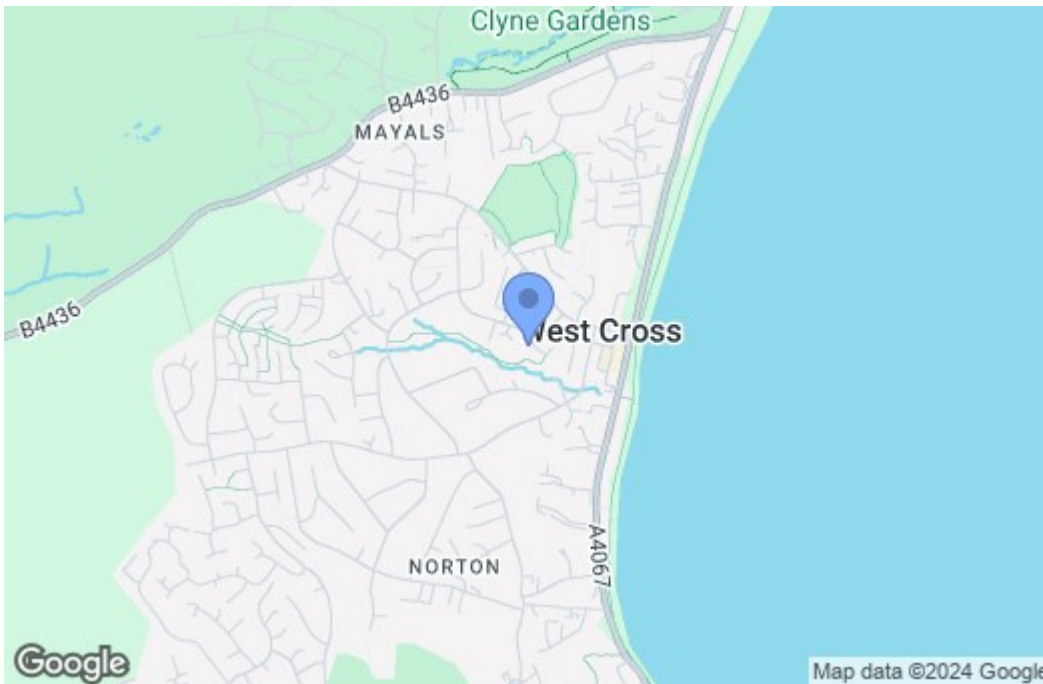
Tenure

Freehold.

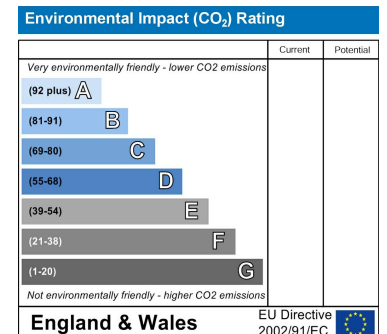
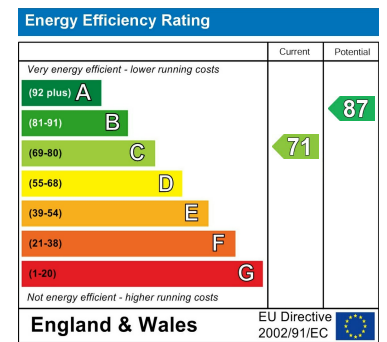
Floor Plan



Area Map



Energy Efficiency Graph



These particulars, whilst believed to be accurate are set out as a general outline only for guidance and do not constitute any part of an offer or contract. Intending purchasers should not rely on them as statements of representation of fact, but must satisfy themselves by inspection or otherwise as to their accuracy. No person in this firm's employment has the authority to make or give any representation or warranty in respect of the property.