



£450,000

🔑 TENURE: Freehold

📊 EPC RATING: D

💰 COUNCIL TAX BAND: E

Loggerheads Market Drayton

Mucklestone Wood Lane Loggerheads
Market Drayton Shropshire



If you go down to the woods today, you're sure of a BIG surprise..... Because we have a fantastic detached house on the highly regarded Mucklestone Wood Lane, facing open countryside to the front and is set on a generous sized landscaped corner plot.

The home is perfect for the largest of families and comprises entrance hall with guest WC off, large full length lounge, dining room, large full length breakfast kitchen which has an extensive range of units and orangery style conservatory with French doors from both the dining room and breakfast kitchen. Upstairs there are five bedrooms, en-suite shower room and family bathroom. As well as the landscaped gardens there is also a double width driveway and detached double garage.

- Five Bedroom Detached House
- Landscaped Gardens On Corner Plot
- Two Reception Rooms & Conservatory
- Large Breakfast Kitchen
- En-Suite, Family Bathroom & Guest WC
- Double Garage

You can reach us **9am to 9pm**, 7 days a week

28/29 High Street, Market Drayton, Shropshire, TF9 1QF

01630 658888

hellomarketdrayton@dourishandday.co.uk



Entrance Hallway

Having half glass double glazed front entrance door, stairs to the first floor and under stair store cupboard.

Guest WC

Fitted with a low level WC with concealed cistern and vanity wash basin with mixer tap. Tiling to the walls and floor, heated towel rail and double glazed window to the front.

Living Room 23' 8" x 11' 9" (7.21m x 3.57m)

A large reception room which has a fire surround with marble inset and hearth incorporating a coal effect gas fire and two radiators. The room has lots of natural light thanks to the double glazed window to the front, two double glazed windows to the side and double glazed French doors to the rear



You can reach us **9am to 9pm**, 7 days a week

28/29 High Street, Market Drayton, Shropshire, TF9 1QF

01630 658888

hellomarketdrayton@dourishandday.co.uk

Dining Room

The dining room is open plan to the lounge and has a radiator and double glazed French doors to the conservatory.

Breakfast Kitchen 27' 4" x 9' 10" (8.34m x 3.0m)

The large breakfast kitchen is fitted with an extensive range of base and wall units, work surfaces to three sides incorporating a one and a half bowl single drainer and mixer tap, work surface down lighting and tiled splash backs. A canopy cooker hood is located over a space for a range style cooker with further spaces for a washing machine and dishwasher. Tiling to the floor which continues into the breakfast area which has a radiator, half glass double glazed door to the side and French doors to the conservatory.

Conservatory 9' 1" x 18' 4" (2.78m x 5.6m)

A double glazed conservatory having an orangery style glass roof with inset ceiling spotlights surrounding. Radiator and double glazed French doors to the rear garden.

Landing

Loft access and door to the airing cupboard.

Bedroom One 11' 4" x 11' 7" (3.45m x 3.53m)

A generous sized double bedroom with radiator and double glazed window to the rear.

Bedroom One En-Suite 6' 7" x 5' 3" (2.0m x 1.61m)

Fitted with a white suite comprising tiled shower cubicle with mains fed shower, vanity wash basin and corner low level WC. Tiling to the walls and floor, heated towel rail and double glazed window to the rear.

Bedroom Two 12' 0" x 11' 7" (3.67m x 3.53m)

Another generous sized double bedroom with radiator and double glazed window to the front

Bedroom Three 12' 1" x 10' 11" (3.68m x 3.32m)

Yet another generous sized double bedroom with radiator and double glazed window to the front.

Bedroom Four 10' 1" x 8' 9" (3.07m x 2.67m)

Radiator and double glazed window to the rear.





Bedroom Five 10' 5" x 7' 7" (3.17m x 2.32m)

Currently used as an office having radiator and double glazed window to the front.

Family Bathroom 6' 7" x 6' 9" (2.01m x 2.07m)

Fitted with a white suite comprising panel bath with hand held shower mixer tap, vanity wash basin and low level WC with concealed cistern. Tiling to the walls and floor, heated towel rail and double glazed window to the rear.



Outside Front

The home is located on a corner plot facing fields to the front. The garden has lawns to the front and side with central path to the front entrance door, There is a variety of established plants, shrubs and conifers including two circular beds. There are also two established trees.



You can reach us **9am to 9pm**, 7 days a week

28/29 High Street, Market Drayton, Shropshire, TF9 1QF

01630 658888

hellomarketdrayton@dourishandday.co.uk

Outside Rear

The garden is again landscaped with a variety of established shrubs to the side and adjacent to the home is a block paved patio and further garden with paved circular patio with decorative stone surround. There is a gate to the driveway.

Detached Garage 15' 11" x 18' 2" (4.84m x 5.53m)

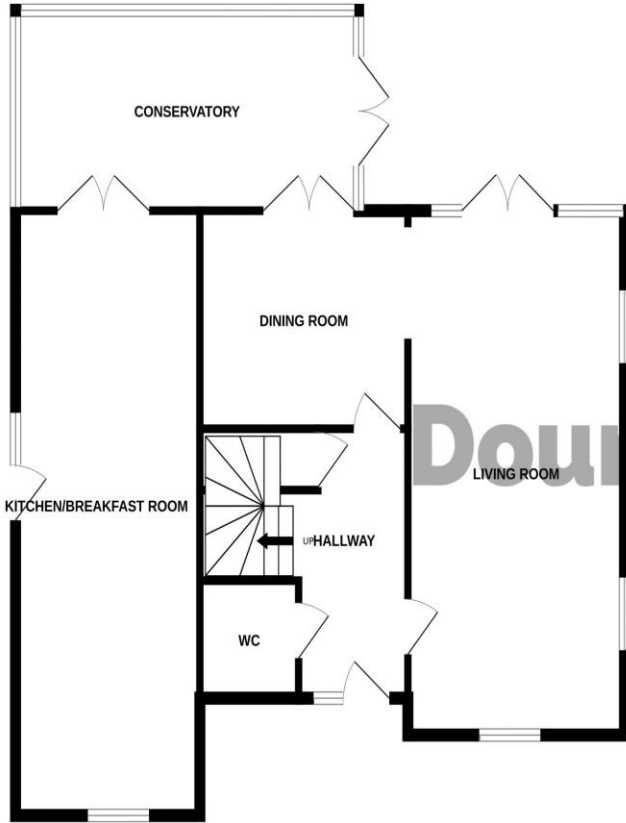
A double garage with electric remote up and over door, power, lighting and two double glazed windows to the rear.

ID Checks

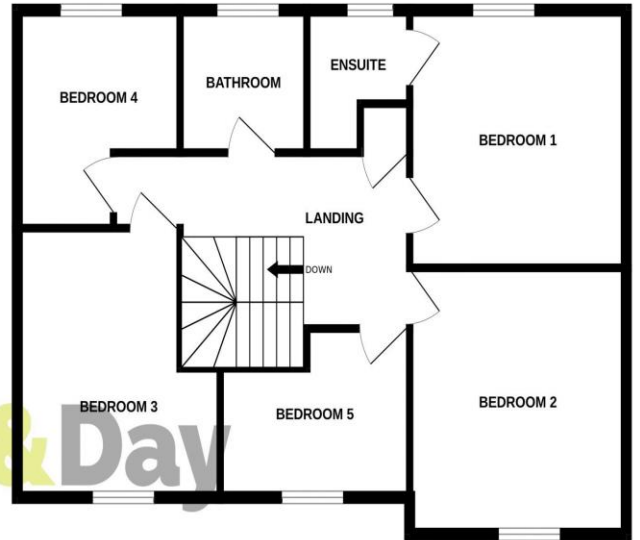
Once an offer is accepted on a property marketed by Dourish & Day estate agents we are required to complete ID verification checks on all buyers and to apply ongoing monitoring until the transaction ends. Whilst this is the responsibility of Dourish & Day we may use the services of MoveButler, to verify Clients' identity. This is not a credit check and therefore will have no effect on your credit history. You agree for us to complete these checks, and the cost of these checks is £30.00 inc. VAT per buyer. This is paid in advance, when an offer is agreed and prior to a sales memorandum being issued. This charge is non-refundable.



GROUND FLOOR



1ST FLOOR



Dourish & Day

Whilst every attempt has been made to ensure the accuracy of the floorplan contained here, measurements of doors, windows, rooms and any other items are approximate and no responsibility is taken for any error, omission or mis-statement. This plan is for illustrative purposes only and should be used as such by any prospective purchaser. The services, systems and appliances shown have not been tested and no guarantee as to their operability or efficiency can be given.
Made with Metropix ©2024

Energy Efficiency Rating		Current	Potential
92+1	A		82
81-91	B		
69-80	C		
55-68	D	65	
39-54	E		
21-38	F		
1-20	G		

Best energy efficient - higher running costs
EU Directive 2002/91/EC
www.epca.gov.uk



IMPORTANT NOTICE Dourish & Day for themselves and for the vendor or lessors of this property whose agents they are given notice that: (i) the particulars are set out as a general outline only for the guidance of intending purchasers or lessees, and do not constitute, nor constitute part of, an offer of contract, (ii) all descriptions, dimensions, references to condition and necessary permissions for use and occupation, and other details are given in good faith and are believed to be correct but any intending purchasers or tenants should not rely on them as statement or representation of fact but must satisfy themselves by inspection or otherwise as to the correctness of each of them, (iii) no person in the employment of Dourish & Day has any authority to make or give any representation or warranty whatever in relation to this property.

You can reach us **9am to 9pm**, 7 days a week

28/29 High Street, Market Drayton, Shropshire, TF9 1QF

01630 658888

hellomarketdrayton@dourishandday.co.uk