



£485,000

🔑 TENURE: Freehold

📊 EPC RATING: B

£ COUNCIL TAX BAND: F

## Knighton Market Drayton

Chetwode Close Knighton  
Market Drayton Shropshire



***This fantastic double fronted, four bedroom detached family home is sure to get the heart racing! located in the highly desirable Village of Knighton enjoying excellent access into Newcastle Under Lyme, Market Drayton, Nantwich and superb nearby commuter links.***

The property is discreetly located on a large plot within in a small cul-de-sac and is approached via a long gravel driveway which provides parking for numerous vehicles as well as the added benefit of a detached double garage and a private landscaped rear garden. To the property embraces open plan living having a contemporary open plan breakfast kitchen with island and built in appliances, open plan lounge with wood burner, study/snug, guest w.c and utility room. To the first floor there are four bedrooms, En-suite and family bathroom.

- Superb Four Bedroom Detached Property
- Parking For Numerous Vehicles & Double Garage
- Contemporary Open Plan Breakfast Kitchen
- Living Room & Study/Sitting Room
- Guest W.C & Utility Room
- Desirable Rural Village Location

You can reach us **9am to 9pm**, 7 days a week

28/29 High Street, Market Drayton, Shropshire, TF9 1QF

**01630 658888**

hellomarketdrayton@dourishandday.co.uk



## Entrance Porch

Accessed through a double glazed entrance door with double glazed window to the front elevation, and a further glazed door to the open-plan entrance hallway.

## Open-Plan Entrance Hallway

A spacious & light entrance hallway, having a contemporary styled radiator, ceiling coving, a double glazed window to the front elevation, stairs off, rising to the first floor landing & accommodation with a useful understairs storage cupboard, opening into open-plan family/breakfast kitchen & glazed internal door to lounge.

## Lounge 12' 5" x 20' 6" (3.79m x 6.26m)

A spacious & beautifully presented open-plan lounge, having wood effect flooring, ceiling coving, a feature exposed brick chimney breast housing a multi-fuel cast-iron stove on a slate hearth, a contemporary styled radiator and double glazed window with further double glazed double doors leading onto the adjacent cut Indian stone paved patio seating/entertaining area &



You can reach us **9am to 9pm**, 7 days a week

28/29 High Street, Market Drayton, Shropshire, TF9 1QF

**01630 658888**

[hellomarketdrayton@dourishandday.co.uk](mailto:hellomarketdrayton@dourishandday.co.uk)

out to the private rear garden. A further opening leads through into the open-plan family/breakfast kitchen.

## **Family/Breakfast Kitchen** 12' 2" x 19' 1" (3.72m x 5.82m)

A modern contemporary styled refitted open-plan family/breakfast kitchen, fitted with a matching range of wall, base & drawer units with fitted work surfaces over incorporating an electric glass halogen hob with a glass splashback rising to a glass extractor canopy over and a 1.5 bowl stainless steel sink/drainage with a contemporary styled mixer tap over, and a further range of appliances which include; integrated wine cooler, integrated dishwasher, integrated refrigerator & integrated freezer. Additional units include a useful pull-out larder configuration, discreet cupboard lighting, a matching central breakfast island with further pan drawers. The room also benefits from a vertical contemporary styled radiator, inset ceiling downlighting throughout with inset ceiling mounted audio speakers, wood effect flooring and two double glazed windows to the front elevation.

## **Study/Snug** 13' 7" x 9' 0" (4.13m x 2.74m)

A spacious second reception room offering flexible usage, ceiling coving, wood effect flooring, a double glazed window to the front elevation & contemporary styled radiator.

## **Utility Room** 12' 4" x 6' 10" (3.77m x 2.08m) maximum measurements

Fitted with work surfaces incorporating an inset sink/drainage with mixer tap over, with matching wall & base unit with space for plumbed appliances. The room also benefits from having ceramic splashback tiling to the wall surfaces, wood effect flooring, a contemporary styled radiator and a double glazed window & door to the rear elevation leading out to the garden.

## **Guest WC**

Fitted with a low-level WC & wash hand basin with mixer tap over. The room also benefits from having a towel radiator, ceramic splashback tiling to the wall surfaces and a double glazed window to the side elevation.

## **First Floor Landing**

Featuring a porthole style double glazed window to the side elevation and having access to loft space via a pull-down ladder for ease of access, ceiling coving, a contemporary styled radiator and internal doors off to all bedrooms & bathroom.

## **Bedroom One** 12' 5" x 9' 6" (3.79m x 2.89m) (measurements exclude the dressing area space)

A double bedroom having a double glazed window to the rear elevation, ceiling coving, a contemporary styled radiator and an open-archway leading through into a walk-in dressing area.



You can reach us **9am to 9pm**, 7 days a week

28/29 High Street, Market Drayton, Shropshire, TF9 1QF

**01630 658888**

[hellomarketdrayton@dourishandday.co.uk](mailto:hellomarketdrayton@dourishandday.co.uk)



**Walk-in Dressing Area (Bedroom One)** 6' 1" x 6' 11" (1.85m x 2.11m)

Having a double glazed window to the rear elevation, a contemporary styled radiator, ceiling coving and further internal door leading through to the En-suite.

**En-suite (Bedroom One)** 5' 11" x 6' 9" (1.81m x 2.07m)

Fitted with a modern contemporary styled suite comprising of a double walk-in shower cubicle with overhead ceiling mounted monsoon style shower head & screen, a wash hand basin with chrome mixer tap over & storage beneath and a low-level WC. The En-suite also benefits from having ceramic tiling to the floor, ceramic tiled walls, inset ceiling downlighting, a contemporary styled towel radiator and a double glazed window to the side elevation.

**Bedroom Two** 12' 4" x 10' 8" (3.77m x 3.25m)

A second double bedroom, having ceiling coving, a contemporary styled radiator and double glazed window to the front elevation.



You can reach us **9am to 9pm**, 7 days a week

28/29 High Street, Market Drayton, Shropshire, TF9 1QF

**01630 658888**

[hellomarketdrayton@dourishandday.co.uk](mailto:hellomarketdrayton@dourishandday.co.uk)

## **Bedroom Three** 8' 9" x 11' 3" (2.67m x 3.43m)

A third double bedroom, having ceiling coving, a contemporary styled radiator and double glazed window to the front elevation.

## **Bedroom Four** 12' 5" x 7' 6" (3.78m x 2.28m)

A fourth double bedroom, having ceiling coving, a contemporary styled radiator and double glazed window to the front elevation.

## **Family Bathroom** 8' 8" x 8' 3" (2.65m x 2.51m) maximum measurements

Fitted with a suite comprising of a panelled bath with electric shower over & screen to side, a pedestal wash hand basin & low-level WC. The room also benefits from having a radiator and a double glazed window to the front elevation.

## **Externally**

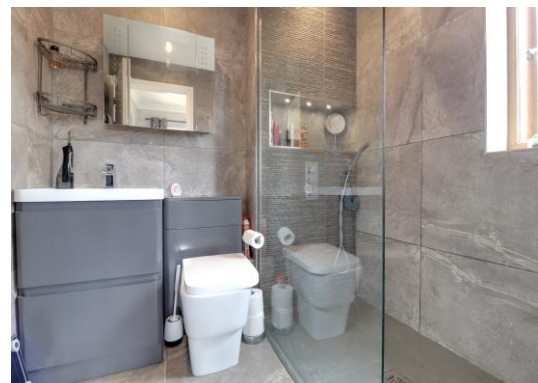
The property is positioned on an impressive large plot well back from the service road and is approached over a large gravelled driveway with wrought iron gated access to the main entrance door to the front elevation & double detached brick & pitched roof constructed garage. There is a large beautifully presented lawned foregarden with a feature pond and the garden is bordered by a variety of mature plants, shrubs & trees with access from each side of the property of a beautifully presented & landscaped private rear garden which features cut Indian stone paved outdoor seating/entertaining areas and a further two raised decked seating areas. The garden also benefits from an external cold water tap supply, lighting & power points.

## **Detached Double Garage** 17' 2" x 17' 11" (5.24m x 5.46m)

A pitched roof & brick constructed garage which offers good boarded loft space, power, lighting, two double glazed windows & two up and over garage doors to the front elevation.

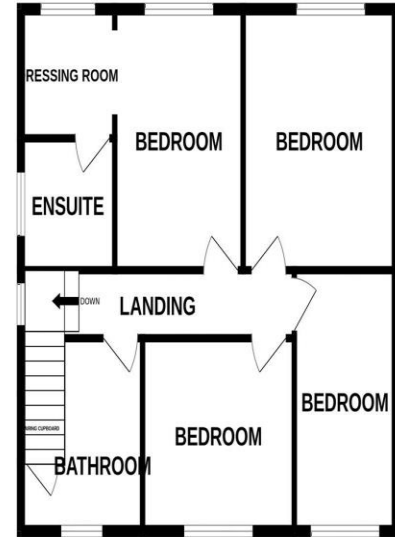
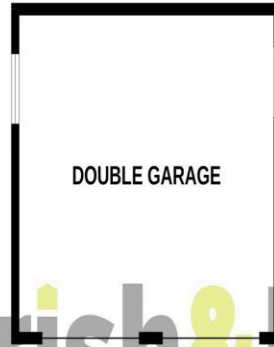
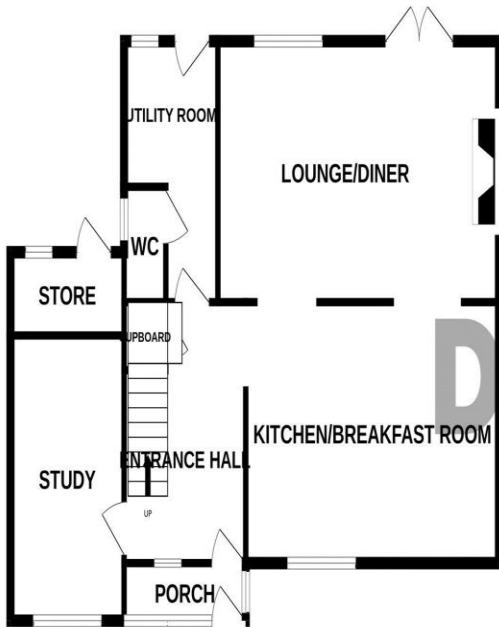
## **ID Checks**

Once an offer is accepted on a property marketed by Dourish & Day estate agents we are required to complete ID verification checks on all buyers and to apply ongoing monitoring until the transaction ends. Whilst this is the responsibility of Dourish & Day we may use the services of MoveButler, to verify Clients' identity. This is not a credit check and therefore will have no effect on your credit history. You agree for us to complete these checks, and the cost of these checks is £30.00 inc. VAT per buyer. This is paid in advance, when an offer is agreed and prior to a sales memorandum being issued. This charge is non-refundable.



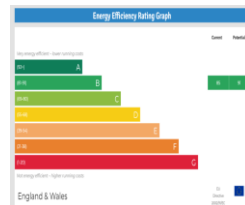
GROUND FLOOR

1ST FLOOR



Dourish&Day

Whilst every attempt has been made to ensure the accuracy of the floorplan contained here, measurements of doors, windows, rooms and any other items are approximate and no responsibility is taken for any error, omission or mis-statement. This plan is for illustrative purposes only and should be used as such by any prospective purchaser. The services, systems and appliances shown have not been tested and no guarantee as to their operability or efficiency can be given.  
Made with Metropix ©2024



**IMPORTANT NOTICE** Dourish & Day for themselves and for the vendor or lessors of this property whose agents they are given notice that: (i) the particulars are set out as a general outline only for the guidance of intending purchasers or lessees, and do not constitute, nor constitute part of, an offer of contract, (ii) all descriptions, dimensions, references to condition and necessary permissions for use and occupation, and other details are given in good faith and are believed to be correct but any intending purchasers or tenants should not rely on them as statement or representation of fact but must satisfy themselves by inspection or otherwise as to the correctness of each of them, (iii) no person in the employment of Dourish & Day has any authority to make or give any representation or warranty whatever in relation to this property.

You can reach us **9am to 9pm**, 7 days a week

28/29 High Street, Market Drayton, Shropshire, TF9 1QF

**01630 658888**

[hellomarketdrayton@dourishandday.co.uk](mailto:hellomarketdrayton@dourishandday.co.uk)