



Offers Over £350,000

🔑 TENURE: Freehold

☰ EPC RATING: D

£ COUNCIL TAX BAND: D

Loggerheads Market Drayton

Mucklestone Wood Lane Loggerheads
Market Drayton Shropshire



Mucklestone Wood Lane is one of the villages most sought after roads to live and this particular detached bungalow is situated opposite the countryside fronted with established trees.

The home is set on a generous sized plot with established southerly facing gardens, double width driveway and double garage. Internally the principle rooms are all of a generous size and perfect for buyers looking to retain room sized but all on one level. Comprising entrance porch, reception hall, large lounge, fitted kitchen, separate utility, two large bedrooms, contemporary fitted en-suite and separate shower room both with digital controlled showers. This is a deceptively spacious home which will not disappoint.

- Spacious Detached Bungalow
- Large Lounge
- Fitted Kitchen & Separate Utility
- Two Bedrooms
- En-Suite & Family Shower Room
- Private Gardens & Double Garage

You can reach us 9am to 9pm, 7 days a week

28/29 High Street, Market Drayton, Shropshire, TF9 1QF

01630 658888

hellomarketdrayton@dourishandday.co.uk



Entrance Porch

Side entrance door with glass side panel and further door to the hallway.

Entrance Hallway

The large hallway has double doors off to the lounge and doors to the bedrooms, shower room and kitchen. Loft access, additional store cupboard and radiator.

Lounge 20' 0" x 12' 4" (6.1m x 3.76m)

A spacious reception room which has a fireplace and hearth incorporating a coal effect gas fire. Radiator, double glazed French doors and window to the rear.

Kitchen 12' 3" x 10' 9" (3.74m x 3.27m)

Fitted with a range of base and wall units, work surfaces to two sides and inset single drainer sink unit and mixer tap. Integrated electric oven and four ring gas hob and high gloss splash backs.



You can reach us **9am to 9pm**, 7 days a week

28/29 High Street, Market Drayton, Shropshire, TF9 1QF

01630 658888

hellomarketdrayton@dourishandday.co.uk

Utility Room 12' 3" x 7' 2" (3.74m x 2.18m)

Fitted with base and larder units, work surfaces to two sides and stainless steel sink unit, drainer and mixer tap. Spaces for a washer, dryer and dishwasher. Double glazed doors to both front and rear gardens.

Bedroom One 15' 4" x 10' 4" (4.67m x 3.16m)

A spacious bedroom with fitted wardrobes and dressing table, radiator and double glazed window to the front.

En-Suite (Bedroom One) 8' 9" x 3' 4" (2.66m x 1.02m)

Fitted with a tiled shower cubicle with digitally controlled shower, space saver vanity wash basin and low level WC. Fitted wall mirror, heated towel rail and window to the side.

Bedroom Two 9' 10" x 14' 2" (3m x 4.32m)

Another spacious bedroom having radiator and double glazed window to the front.

Shower Room 7' 6" x 6' 6" (2.28m x 1.97m)

Fitted with a double width shower cubicle with drying area and digitally controlled shower, vanity wash basin and low level WC with concealed cistern. Heated towel rail and window to the side.

Outside Front

The home has a lawned front garden and double width tarmac driveway up to the double garage. Adjacent to the entrance is a paved courtyard area with two doors into the property.

Double Garage 16' 11" x 16' 1" (5.15m x 4.9m)

Remote up and over door, power, lighting, door and window to the rear.

Outside Rear

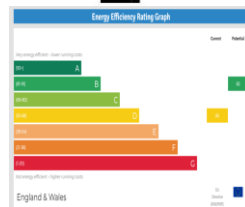
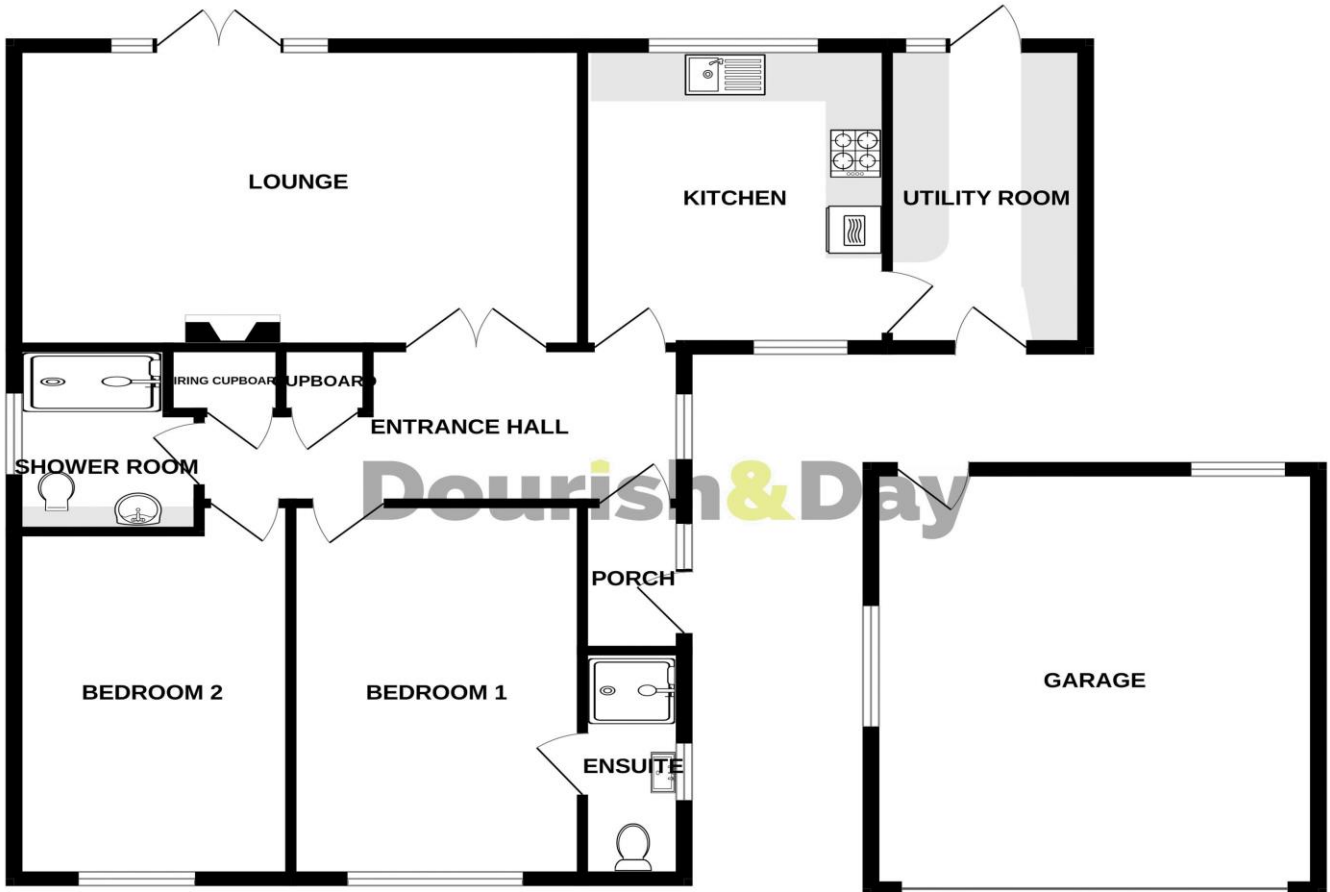
There is a full width paved and decking sun terrace with steps to a lawned garden with rockery borders. Access to both sides of the bungalow.

ID Checks

Once an offer is accepted on a property marketed by Dourish & Day estate agents we are required to complete ID verification checks on all buyers and to apply ongoing monitoring until the transaction ends. Whilst this is the responsibility of Dourish & Day we may use the services of MoveButler, to verify Clients' identity. This is not a credit check and therefore will have no effect on your credit history. You agree for us to complete these checks, and the cost of these checks is £30.00 inc. VAT per buyer. This is paid in advance, when an offer is agreed and prior to a sales memorandum being issued. This charge is non-refundable.



GROUND FLOOR



Whilst every attempt has been made to ensure the accuracy of the floorplan contained here, measurements of doors, windows, rooms and any other items are approximate and no responsibility is taken for any error, omission or mis-statement. This plan is for illustrative purposes only and should be used as such by any prospective purchaser. The services, systems and appliances shown have not been tested and no guarantee as to their operability or efficiency can be given.
Made with Metropix ©2024



IMPORTANT NOTICE Dourish & Day for themselves and for the vendor or lessors of this property whose agents they are given notice that: (i) the particulars are set out as a general outline only for the guidance of intending purchasers or lessees, and do not constitute, nor constitute part of, an offer of contract, (ii) all descriptions, dimensions, references to condition and necessary permissions for use and occupation, and other details are given in good faith and are believed to be correct but any intending purchasers or tenants should not rely on them as statement or representation of fact but must satisfy themselves by inspection or otherwise as to the correctness of each of them, (iii) no person in the employment of Dourish & Day has any authority to make or give any representation or warranty whatever in relation to this property.

You can reach us **9am to 9pm**, 7 days a week

28/29 High Street, Market Drayton, Shropshire, TF9 1QF

01630 658888

hellomarketdrayton@dourishandday.co.uk