



£350,000

KEY TENURE: Freehold

≡ EPC RATING: E

£ COUNCIL TAX BAND: B

Market Drayton

The Burgage
Market Drayton Shropshire



This stunning, detached, double bay fronted Victorian home has it all, finished to a high standard and situated with all of Market Drayton's comprehensive range of Town Centre shops and amenities literally on your doorstep!

This beautifully presented and much improved home internally comprises of an entrance hallway, spacious living room, refitted open plan breakfast kitchen with built in appliances, large open plan dining room with contemporary style fitted storage units, entrance hallway with a traditional style tiled floor and garden/store room. To the first floor there are three bedrooms, En-suite shower room and a family bathroom. Externally the property has a driveway and private rear garden with paved seating area. This superb home is being offered with No Upward Chain.

- Stunning Detached Dbl Fronted Victorian Home
- Large Living Room & Open Plan Dining Room
- Refitted Contemporary Kitchen With Appliances
- Three Bedroom & En-Suite to Bedroom One
- Driveway & Private Rear Garden Area

You can reach us **9am to 9pm**, 7 days a week

14 Salter Street, Stafford, Staffordshire, ST16 2JU

01785 223344

hello@dourishandday.co.uk



Entrance Hallway

Accessed through a modern composite entrance door, having Minton patterned tiled flooring, a feature wood & cast-iron turned staircase off, rising to the first floor landing & accommodation, feature double height double glazed window, dado rail, radiator, spacious understairs storage cupboard with radiator, and glazed door to the open-plan breakfast kitchen.

Open-Plan Breakfast Kitchen 8' 10" x 15' 0" (2.69m x 4.58m)

A refitted modern contemporary style open-plan kitchen, comprising of wall mounted units, worktop incorporating a composite sink with contemporary style mixer tap, and 4-ring gas hob with a contemporary extractor over. There is a breakfast bar area, matching base units, integrated eye-level double oven/grill, integrated microwave & washing machine, splashback tiling, part-wood panelled wall, radiator, numerous downlights, window & glazed door to the rear garden room & large opening into the dining room.

Dining Room 12' 9" x 11' 11" (3.89m x 3.63m) excluding bay window recess

A beautifully presented, spacious & light open-plan reception room, having double height contemporary styled storage units, feature opening into chimney breast, numerous downlights, radiator, and a walk-in bay window to the front elevation.



You can reach us **9am to 9pm**, 7 days a week

14 Salter Street, Stafford, Staffordshire, ST16 2JU

01785 223344

hello@dourishandday.co.uk

Living Room 15' 2" x 16' 1" (4.62m x 4.89m) measured into bay window

A spacious & bright beautifully presented living room, having the original tiled fire surround with decorative cast-iron inset housing an open fire grate on a quarry tiled hearth, dado rail, ceiling rose, picture rail, radiator, window to the side elevation, and the original sash walk-in bay window to the front elevation.

Garden Room 5' 8" x 15' 3" (1.72m x 4.65m)

Accessed via a glazed door from the kitchen, having wall mounted shaker style units, wood worktop with contemporary styled base units, and glazed door to the side elevation leading to the private, part-walled rear garden.

First Floor Landing

With coving, numerous downlights, airing cupboard with shelving & radiators, doors off to bedrooms & bathroom.

Bedroom One 9' 7" x 13' 3" (2.93m x 4.05m) max

Having fitted double height double wardrobes to one wall with mirrored doors, two sash windows to the front elevation, coving, radiator door to en-suite.

En-suite (Bedroom One)

Comprising of a ceramic tiled shower cubicle housing mains shower, rectangular wash hand basin with chrome mixer tap & vanity unit, low-level WC. There is also double height contemporary styled wall mounted units, wall mounted mirror, contemporary styled towel radiator, downlights, access to ceiling void, and a double glazed window to the side elevation.

Bedroom Two 9' 9" x 10' 11" (2.96m x 3.33m)

Having a built-in wardrobe, an additional single wardrobe/storage cupboard, radiator, and a sash window to the front elevation.

Bedroom Three 8' 11" x 9' 1" (2.71m x 2.78m)

Having a radiator, downlights, access to loft space, sliding doors to a spacious walk-in wardrobe, storage cupboard, access to loft space, and a double glazed window to the rear elevation.

Bathroom 6' 4" x 5' 7" (1.94m x 1.70m)

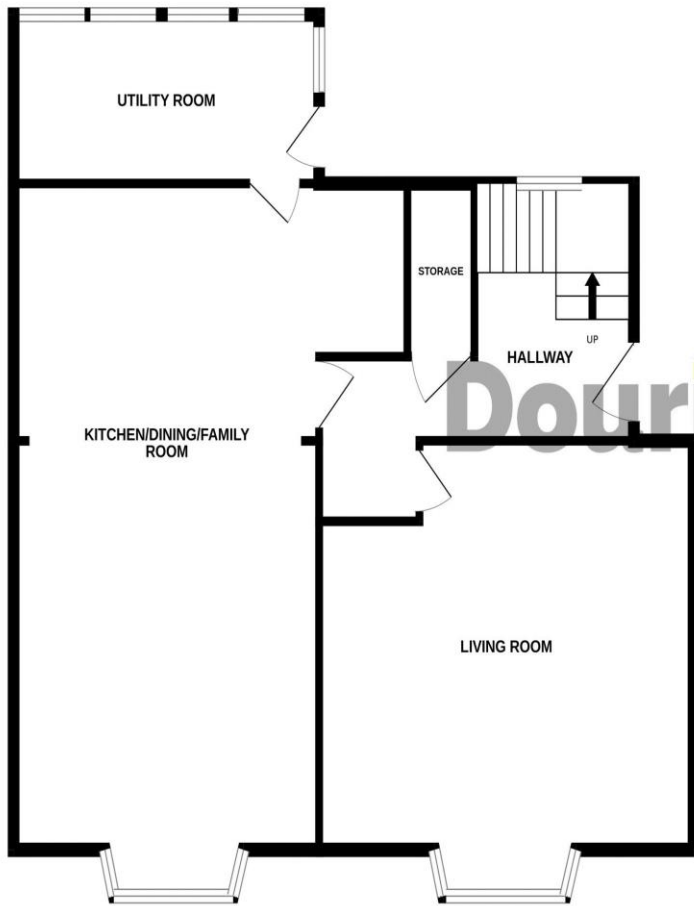
Comprising of a panelled bath with folding shower screen to side & mains shower over, a pedestal wash hand basin & low-level WC. There is also ceramic tiled walls, LED lighting, coving, a chrome towel radiator, access to loft space, and a double glazed window to the rear elevation.

Outside

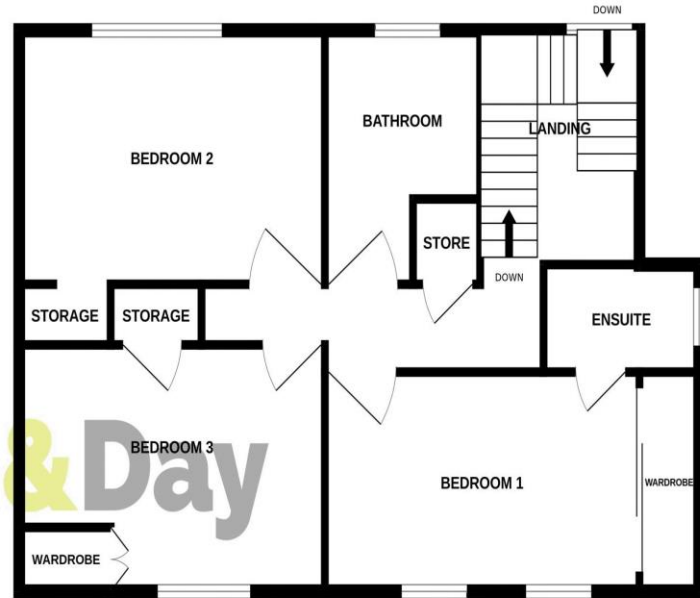
The property has a tarmac driveway to the side elevation, and a private partially walled rear garden with a paved seating area, shale borders, and laid mainly to artificial turf for ease of maintenance.



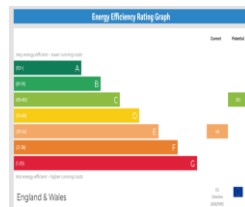
GROUND FLOOR



1ST FLOOR



Whilst every attempt has been made to ensure the accuracy of the floorplan contained here, measurements of doors, windows, rooms and any other items are approximate and no responsibility is taken for any error, omission or mis-statement. This plan is for illustrative purposes only and should be used as such by any prospective purchaser. The services, systems and appliances shown have not been tested and no guarantee as to their operability or efficiency can be given.
Made with Metropix ©2024



IMPORTANT NOTICE Dourish & Day for themselves and for the vendor or lessors of this property whose agents they are given notice that: (i) the particulars are set out as a general outline only for the guidance of intending purchasers or lessees, and do not constitute, nor constitute part of, an offer of contract, (ii) all descriptions, dimensions, references to condition and necessary permissions for use and occupation, and other details are given in good faith and are believed to be correct but any intending purchasers or tenants should not rely on them as statement or representation of fact but must satisfy themselves by inspection or otherwise as to the correctness of each of them, (iii) no person in the employment of Dourish & Day has any authority to make or give any representation or warranty whatever in relation to this property.

You can reach us **9am to 9pm**, 7 days a week

14 Salter Street, Stafford, Staffordshire, ST16 2JU

01785 223344

hello@dourishandday.co.uk