

Parkville Highway **, Coventry, CV6 4HT** **Offers over £215,000**

Evans Estates are Very Proud to Present this Stunning Three Bedroom End of Terrace Family Home Offered with No Upward Chain. The property has the benefits of double glazing and gas central heating (as specified). The property is situated in the Holbrooks area of the city and within The President Kennedy School Catchment. The accommodation comprises of an entrance hall, lounge, and refitted kitchen diner. To the first floor there are three bedrooms and refitted family bathroom. Externally there are gardens to the front and rear.

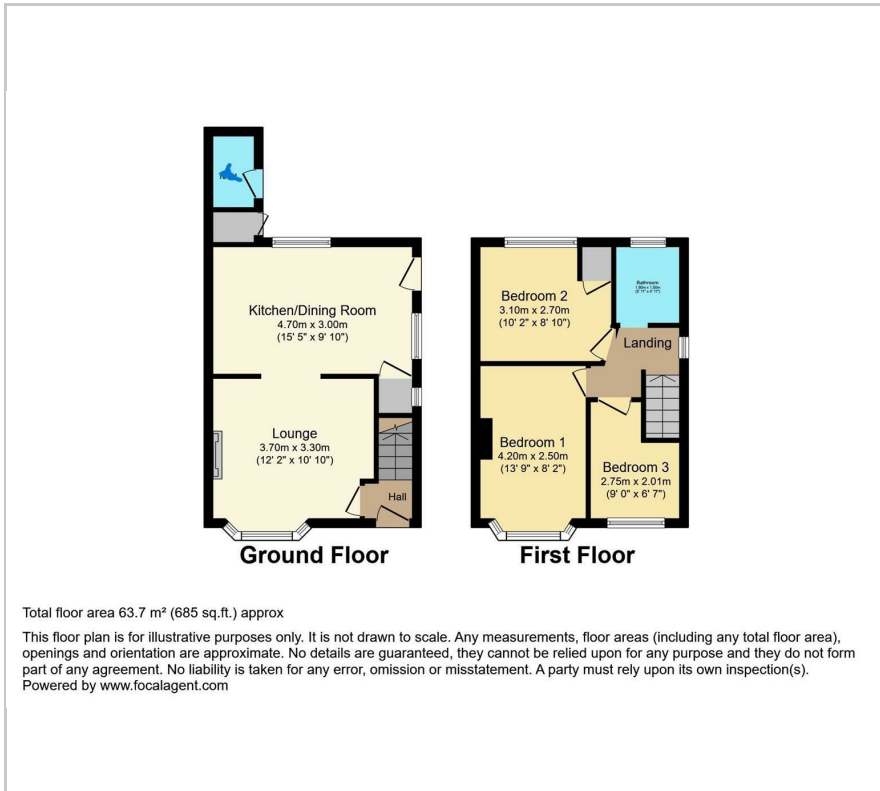
- **Stunning Three Bedroom House**
- **No Upward Chain**
- **Lounge and Refitted Kitchen Diner**
- **Refitted Family Bathroom**

Viewing

Please contact our Evans Estates Office on 02476333363 if you wish to arrange a viewing appointment for this property or require further information.



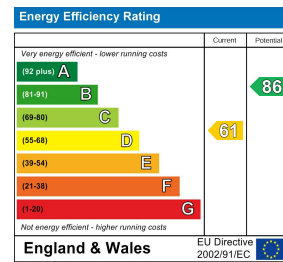
Floor Plan



Area Map



Energy Efficiency Graph



These particulars, whilst believed to be accurate are set out as a general outline only for guidance and do not constitute any part of an offer or contract. Intending purchasers should not rely on them as statements of representation of fact, but must satisfy themselves by inspection or otherwise as to their accuracy. No person in this firm's employment has the authority to make or give any representation or warranty in respect of the property.

47 Headington Avenue, Coventry, West Midlands, CV6 2GX

Tel: 02476333363 Email: info@evans-estates.co.uk <https://www.evans-estates.co.uk>