



EVANS
ESTATES



Frilsham Way , Coventry, CV5 9LS Asking price £260,000

Nestled in the charming area of Frilsham Way, Coventry, this delightful end terrace house presents an excellent opportunity for families and first-time buyers alike. With three well-proportioned bedrooms, this home offers ample space for comfortable living. The property features two inviting reception rooms, perfect for entertaining guests or enjoying quiet family evenings.

The layout is both practical and welcoming, ensuring that every corner of the home is utilised effectively. The bathroom is conveniently located, catering to the needs of the household. The end terrace position provides added privacy and a sense of space, making it an appealing choice for those seeking a tranquil environment.

Frilsham Way is situated in a friendly neighbourhood, with local amenities and schools within easy reach, enhancing the convenience of daily life. This property is not just a house; it is a place where memories can be made and cherished.

With its combination of comfort, space, and a prime location, this end terrace house is a wonderful opportunity for anyone looking to settle in Coventry. Do not miss the chance to make this lovely property your new home.

Viewing

Please contact our Evans Estates Office on 02476333363 if you wish to arrange a viewing appointment for this property or require further information.

- Three Bedroom End of Terrace
- Corner Plot
- Refitted Kitchen Diner
- Off Road Parking
- Garage



3



1

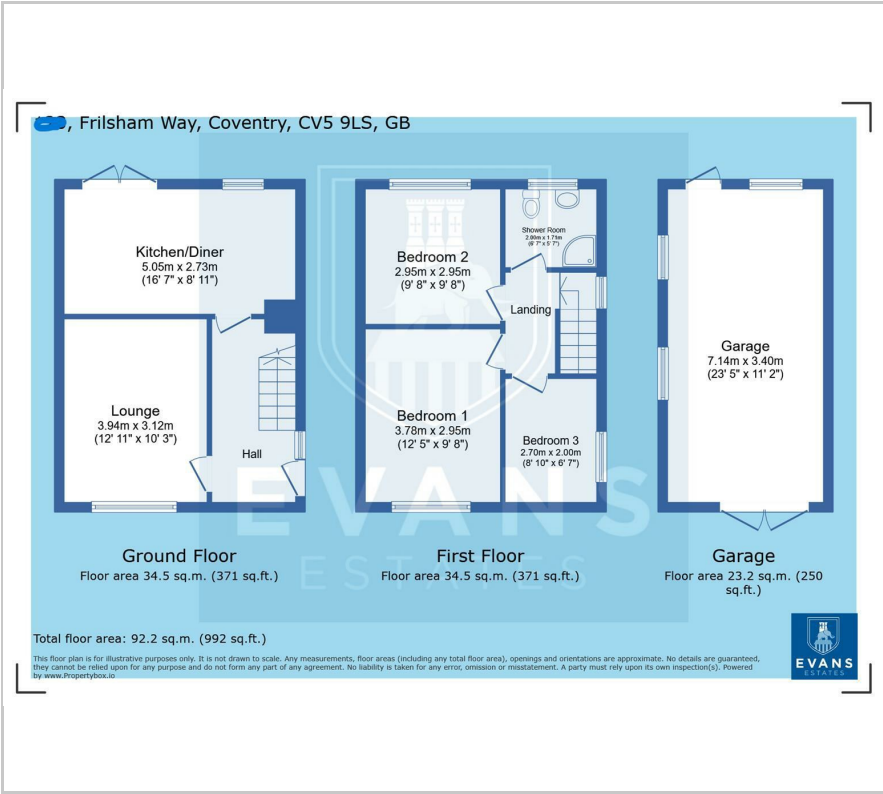


2

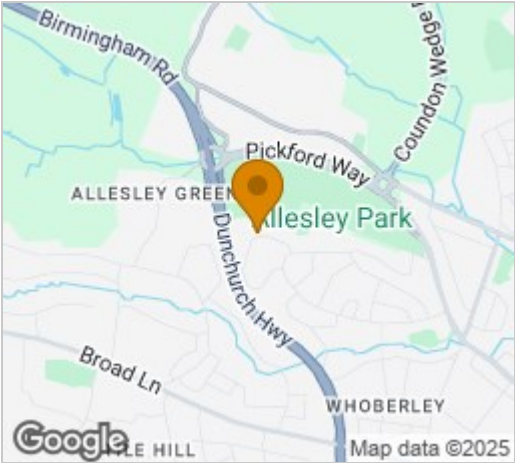


C

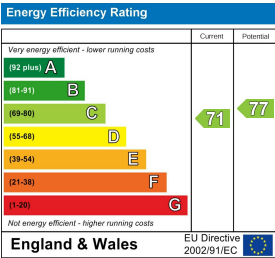
Floor Plan



Area Map



Energy Efficiency Graph



These particulars, whilst believed to be accurate are set out as a general outline only for guidance and do not constitute any part of an offer or contract. Intending purchasers should not rely on them as statements of representation of fact, but must satisfy themselves by inspection or otherwise as to their accuracy. No person in this firms employment has the authority to make or give any representation or warranty in respect of the property.