



EVANS
ESTATES



Wheelwright Lane , Coventry, CV6 4HH Offers over £170,000

Evans Estates is delighted to present this charming three-bedroom end of terrace family home, ideally situated on Wheelwright Lane in the desirable area of Holbrooks and within The President Kennedy School Catchment. This property is offered with no upward chain, making it an excellent opportunity for those looking to move in without delay.

Upon entering, you are welcomed by a spacious entrance hall that leads to two inviting reception rooms, perfect for both relaxation and entertaining. The extended kitchen and dining room provide a wonderful space for family meals and gatherings, ensuring that this home is both functional and comfortable.

The first floor features a well-appointed bathroom and two generously sized double bedrooms, offering ample space for family living. Ascending to the second floor, you will find an additional double bedroom, which could serve as a guest room, home office, or children's bedroom.

The property benefits from double glazing throughout, enhancing energy efficiency and comfort. Externally, there is off-road parking available at the front, providing convenience for residents and visitors alike. Additionally, the rear workshop, measuring 5.93m x 4.37m, offers a versatile space that could be used for hobbies, storage, or even a small home.

- No Upward Chain
- Three Bedooms
- Off Road Parking
- Extended

Viewing

Please contact our Evans Estates Office on 02476333363 if you wish to arrange a viewing appointment for this property or require further information.



3



1

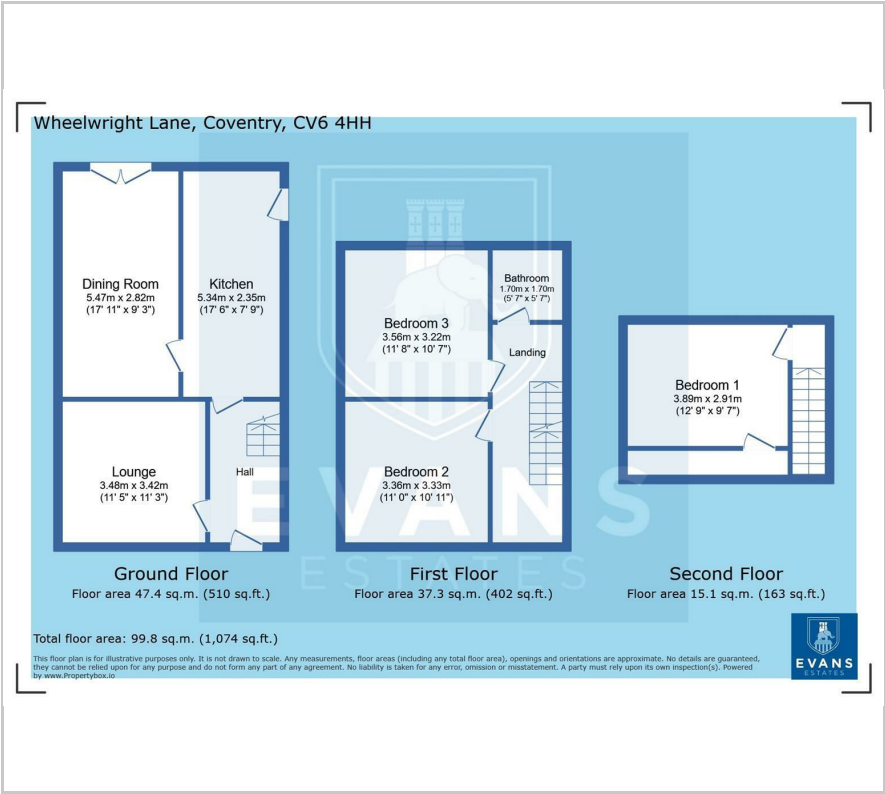


2



D

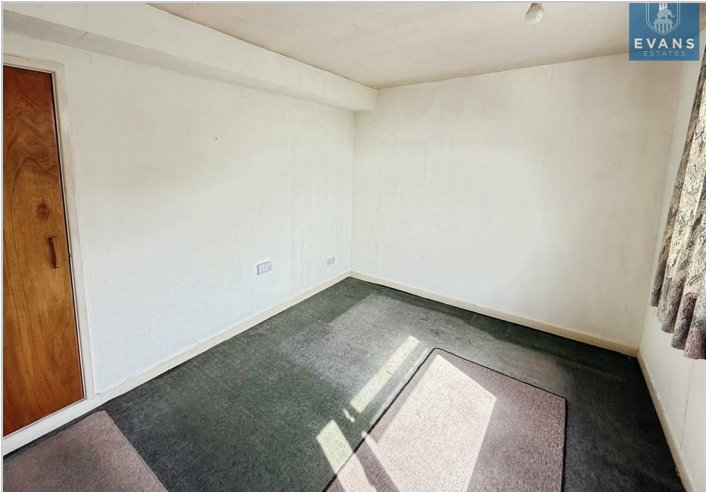
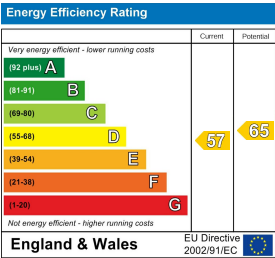
Floor Plan



Area Map



Energy Efficiency Graph



These particulars, whilst believed to be accurate are set out as a general outline only for guidance and do not constitute any part of an offer or contract. Intending purchasers should not rely on them as statements of representation of fact, but must satisfy themselves by inspection or otherwise as to their accuracy. No person in this firms employment has the authority to make or give any representation or warranty in respect of the property.