



## Oldfield Road , Coventry, CV5 8FW Offers over £230,000

Evans Estates is delighted to present this charming three-bedroom mid-terrace family home, located on Oldfield Road in the desirable Chapelfields area of Coventry. This property offers a perfect blend of comfort and convenience, making it an ideal choice for families or first-time buyers and is offered with no upward chain.

Upon entering, you are welcomed by a spacious entrance hall that leads to two inviting reception rooms, providing ample space for relaxation and entertaining. The well-appointed kitchen diner is perfect for family meals and gatherings, while the utility area adds practicality to daily living.

The first floor boasts three generously sized bedrooms, each offering a peaceful retreat for rest and relaxation. The family bathroom is conveniently located to serve all bedrooms, ensuring ease of access for the entire household.

This home benefits from double glazing and gas central heating, providing warmth and energy efficiency throughout the year. Externally, the property features gardens to both the front and rear, offering outdoor space for children to play or for gardening enthusiasts to cultivate their green thumbs.

- No Upward Chain
- Lounge and Kitchen Diner
- Three Bedrooms

### Viewing

Please contact our Evans Estates Office on 02476333363 if you wish to arrange a viewing appointment for this property or require further information.



3



1



2



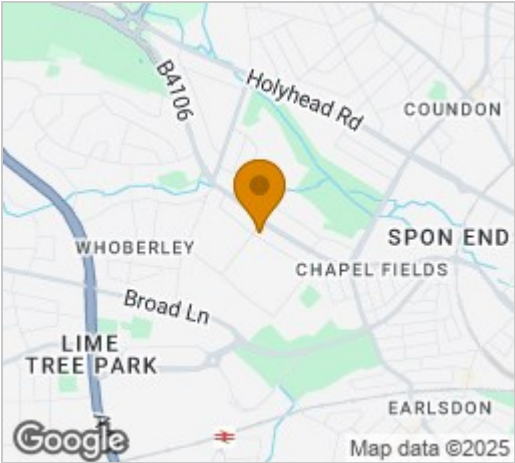
c



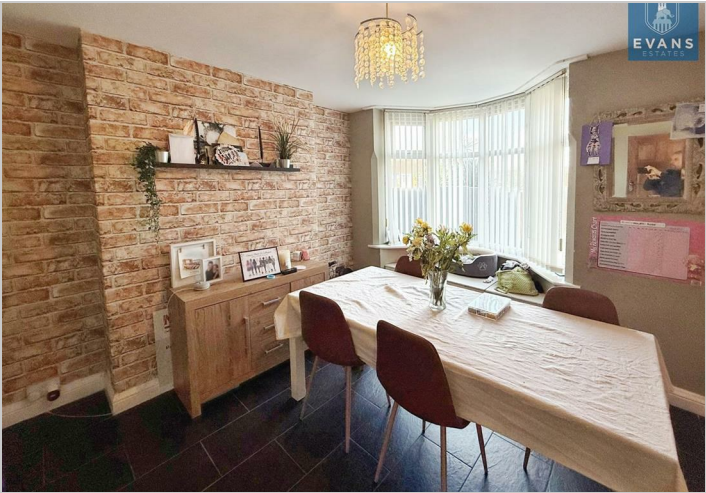
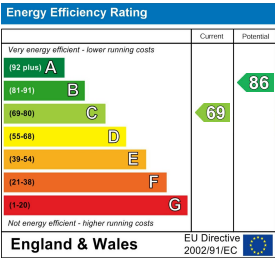
Floor Plan



Area Map



Energy Efficiency Graph



These particulars, whilst believed to be accurate are set out as a general outline only for guidance and do not constitute any part of an offer or contract. Intending purchasers should not rely on them as statements of representation of fact, but must satisfy themselves by inspection or otherwise as to their accuracy. No person in this firms employment has the authority to make or give any representation or warranty in respect of the property.