



Moseley Avenue , Coventry, CV6 1HT Offers over £270,000



Evans Estates is delighted to present this stunning three-bedroom semi-detached family home, located on the desirable Moseley Avenue in Coventry. This property is perfect for families seeking a comfortable and modern living space in a vibrant community.

Upon entering, you are welcomed by a spacious entrance hall that leads to two inviting reception rooms. The lounge offers a warm and relaxing atmosphere, ideal for family gatherings or quiet evenings. The heart of the home is undoubtedly the refitted kitchen diner, which boasts contemporary fixtures including a built-in induction hob, electric oven, and fridge freezer. This space is perfect for both cooking and entertaining, providing a seamless flow for family meals and social occasions.

The first floor features three well-proportioned bedrooms, each offering ample natural light and space for personalisation. The refitted family bathroom is modern and stylish, ensuring convenience for all family members.

Externally, the property benefits from off-road parking for two vehicles, a valuable asset in this bustling area. The rear enclosed garden provides a private outdoor space, perfect for children to play or for hosting summer barbecues.

- Semi Detached Family Home
- Refitted Kitchen Diner
- Off Road Parking
- Three Bedrooms

Viewing

Please contact our Evans Estates Office on 02476333363 if you wish to arrange a viewing appointment for this property or require further information.



3



1

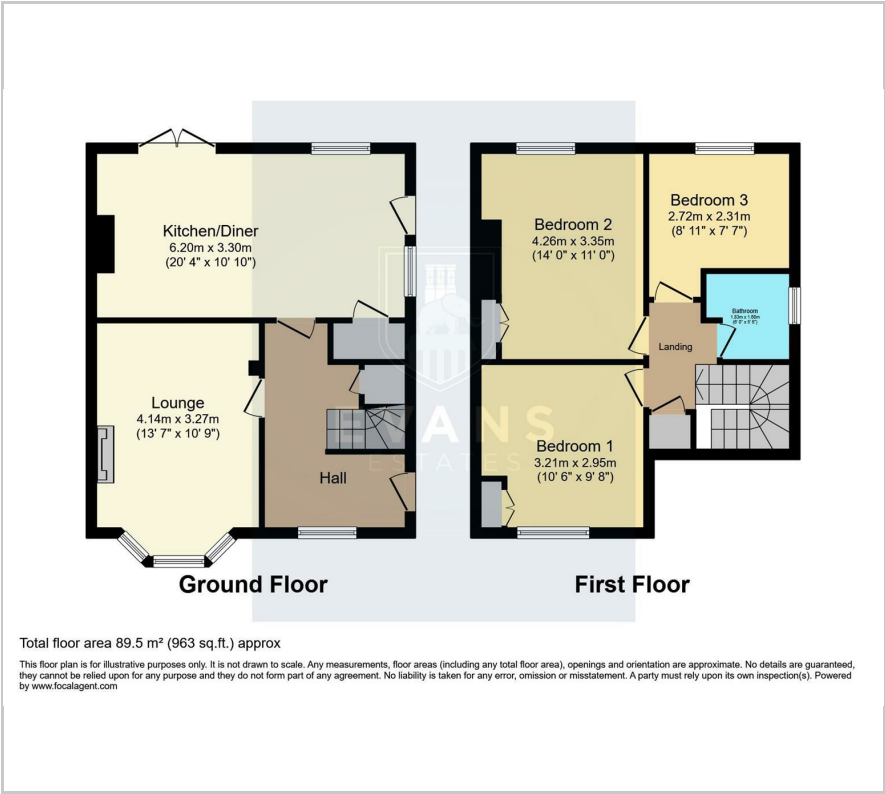


2



D

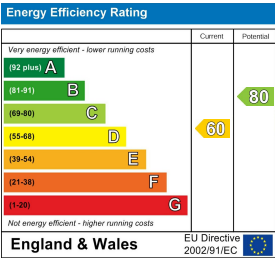
Floor Plan



Area Map



Energy Efficiency Graph



These particulars, whilst believed to be accurate are set out as a general outline only for guidance and do not constitute any part of an offer or contract. Intending purchasers should not rely on them as statements of representation of fact, but must satisfy themselves by inspection or otherwise as to their accuracy. No person in this firms employment has the authority to make or give any representation or warranty in respect of the property.