



Oakwood Avenue , Coventry, CV3 3DL Offers over £230,000

Nestled on Oakwood Avenue in the charming area of Willenhall, Coventry, this delightful semi-detached family home is now available for sale with no upward chain. This property is an excellent opportunity for first-time buyers or those seeking a comfortable family residence.

Upon entering, you are welcomed by a spacious entrance hall that leads to a convenient ground floor cloakroom. The heart of the home is the beautifully refitted kitchen, which boasts modern built-in appliances, making it a joy for any culinary enthusiast. The inviting lounge, with its doors opening directly to the garden, creates a seamless flow between indoor and outdoor living, perfect for entertaining or enjoying quiet evenings.

The first floor comprises two well-proportioned bedrooms, providing ample space for relaxation and rest. A family bathroom serves this level, ensuring convenience for all. Additionally, the property features a boarded loft space, offering potential for further development or simply extra storage.

Externally, the property is enhanced by a charming garden office, fully insulated and equipped with air conditioning and heating, finished with elegant Siberian larch cladding. This versatile space can serve as a home office, studio, or a quiet retreat.

Viewing

Please contact our Evans Estates Office on 02476333363 if you wish to arrange a viewing appointment for this property or require further information.



2



1

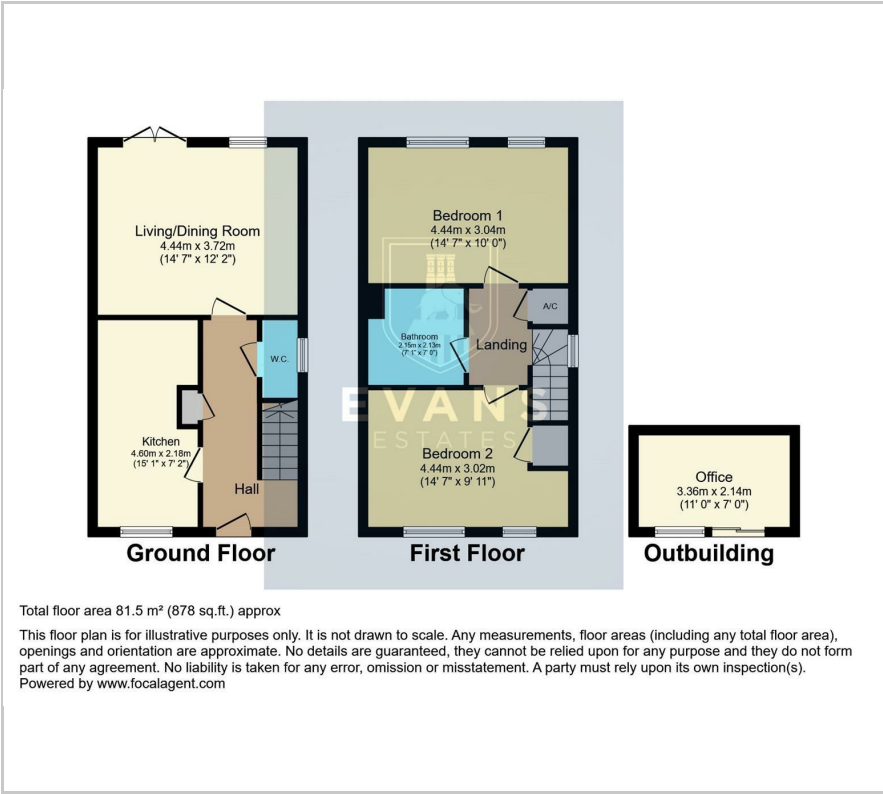


1



B

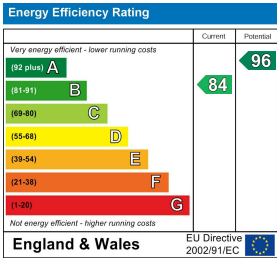
Floor Plan



Area Map



Energy Efficiency Graph



These particulars, whilst believed to be accurate are set out as a general outline only for guidance and do not constitute any part of an offer or contract. Intending purchasers should not rely on them as statements of representation of fact, but must satisfy themselves by inspection or otherwise as to their accuracy. No person in this firms employment has the authority to make or give any representation or warranty in respect of the property.