



## Parkgate Road , Coventry, CV6 4GD Offers over £185,000

Evans Estates is delighted to present this charming two-bedroom semi-detached house located on Parkgate Road in the desirable Holbrooks area of Coventry. This character property boasts the advantages of double glazing and gas central heating, ensuring comfort throughout the seasons.

Upon entering, you will find a spacious lounge diner, perfect for both relaxation and entertaining. The refitted kitchen diner is a modern delight, providing an ideal space for culinary pursuits and family gatherings. Additionally, the ground floor features a convenient shower room, enhancing the practicality of the home.

As you ascend to the first floor, you will discover two well-proportioned bedrooms, each offering a peaceful retreat. The en suite bathroom adds a touch of luxury and convenience, making it an excellent feature for family living or hosting guests.

Externally, the property is complemented by gardens to both the front and rear, providing a lovely outdoor space for gardening or leisure activities. Off-road parking is available at the front, along with a garage at the rear, ensuring ample space for vehicles and storage.

Situated within the catchment area of The President Kennedy School, this home is ideal

- No Upward Chain
- Off Road Parking
- Lounge Diner
- Kitchen Diner
- Two Bedrooms

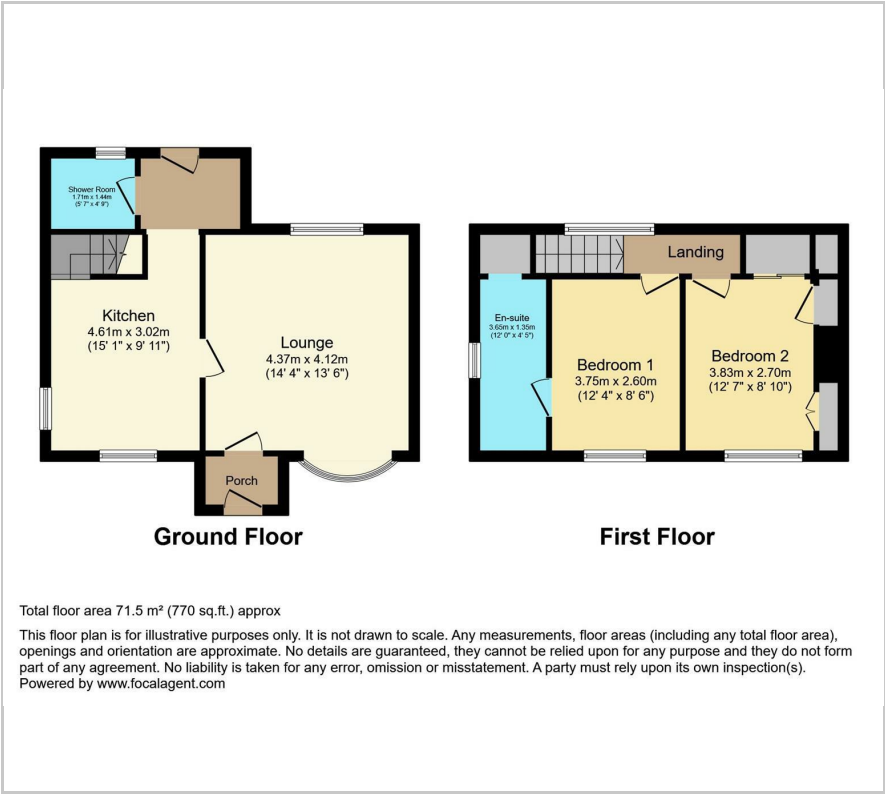
### Viewing

Please contact our Evans Estates Office on 02476333363 if you wish to arrange a viewing appointment for this property or require further information.





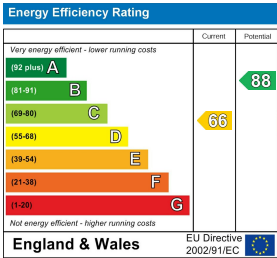
Floor Plan



Area Map



Energy Efficiency Graph



These particulars, whilst believed to be accurate are set out as a general outline only for guidance and do not constitute any part of an offer or contract. Intending purchasers should not rely on them as statements of representation of fact, but must satisfy themselves by inspection or otherwise as to their accuracy. No person in this firms employment has the authority to make or give any representation or warranty in respect of the property.