

## **Billesden Close**

**Binley, Coventry, CV3 2GA**

**Offers over £400,000**

Evans Estates are Very Proud to Present this Stunning Three Bedroom Detached Family Home. The property has the benefits of double glazing and gas central heating (as specified) and is situated in the Binley area of the city. The accommodation comprises of an entrance hall, open plan living are with refitted kitchen with built in induction hob, microwave oven and double oven. There is also a built in fridge and freezer. The living area also has a dining area, lounge and a separate office. To the first floor there are three bedrooms and a refitted family bathroom. Externally there is off road parking to the front with direct access to a double garage. To the rear there is an extensive garden.

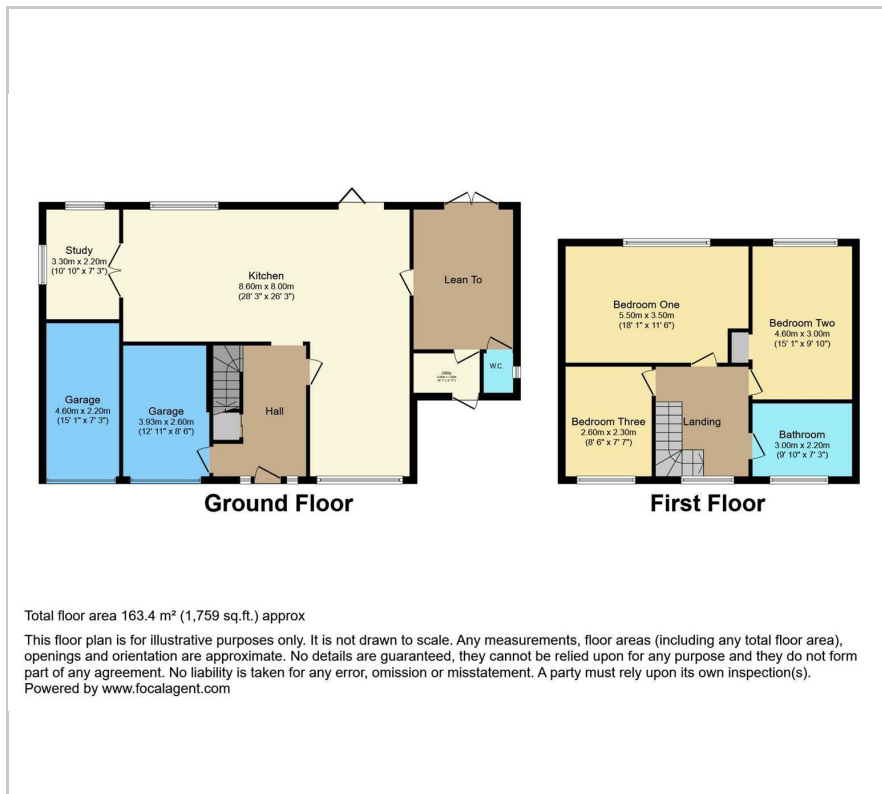
- **Stunning Family Home**
- **Open Plan Living**
- **Refitted Kitchen**
- **Lounge and Dining Area**
- **Refitted Bathroom**

### **Viewing**

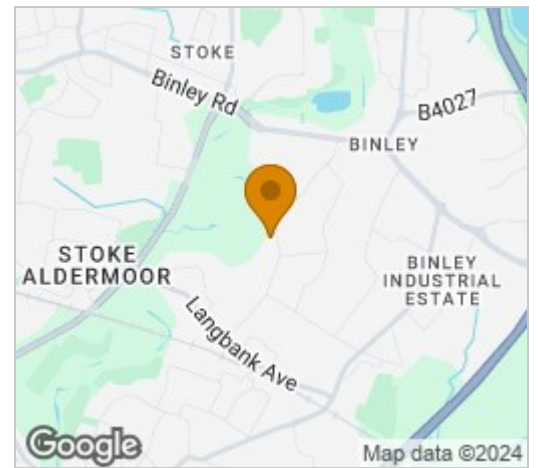
Please contact our Evans Estates Office on 02476333363 if you wish to arrange a viewing appointment for this property or require further information.



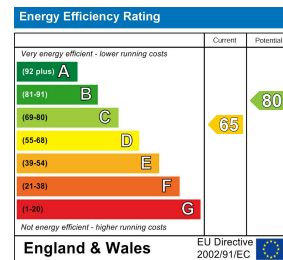
## Floor Plan



## Area Map



## Energy Efficiency Graph



These particulars, whilst believed to be accurate are set out as a general outline only for guidance and do not constitute any part of an offer or contract. Intending purchasers should not rely on them as statements of representation of fact, but must satisfy themselves by inspection or otherwise as to their accuracy. No person in this firm's employment has the authority to make or give any representation or warranty in respect of the property.

47 Headington Avenue, Coventry, West Midlands, CV6 2GX

Tel: 02476333363 Email: info@evans-estates.co.uk <https://www.evans-estates.co.uk>