



Yewdale Crescent

, Coventry, CV2 2FF

Offers over £95,000

Evans Estates are Proud to Present This Two Bedroom First Floor Flat Offered with No Upward Chain. The property is situated in the Potters Green area of the city and has the benefits of double glazing and gas central heating (as specified). The accommodation comprises of an entrance hall, lounge, kitchen and two bedrooms. Externally there is a balcony to the rear. We have been advised the property has approximately 934 years left on the lease , £75 per month service and maintenance charge and £5 per year ground rent charge.

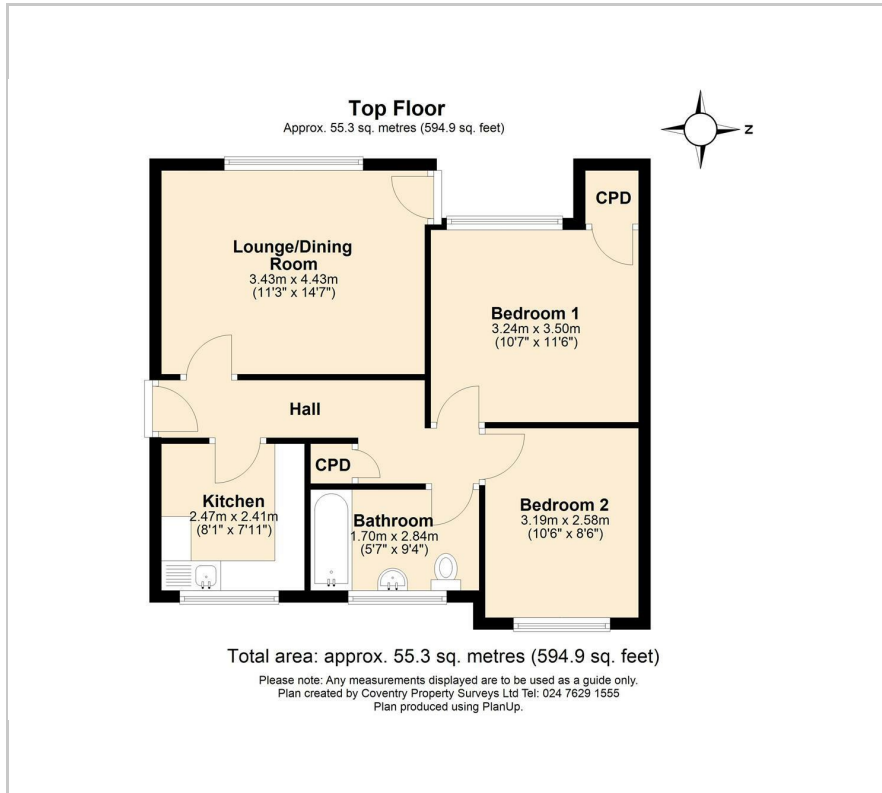
- NO CHAIN
- TWO BEDROOMS
- 1ST FLOOR
- LONG LEASE

Viewing

Please contact our Evans Estates Office on 02476333363 if you wish to arrange a viewing appointment for this property or require further information.



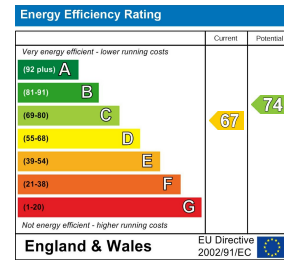
Floor Plan



Area Map



Energy Efficiency Graph



These particulars, whilst believed to be accurate are set out as a general outline only for guidance and do not constitute any part of an offer or contract. Intending purchasers should not rely on them as statements of representation of fact, but must satisfy themselves by inspection or otherwise as to their accuracy. No person in this firm's employment has the authority to make or give any representation or warranty in respect of the property.

47 Headington Avenue, Coventry, West Midlands, CV6 2GX
Tel: 02476333363 Email: info@evans-estates.co.uk <https://www.evans-estates.co.uk>