



Roland Mount , Coventry, CV6 4HP Offers over £200,000

Evans Estates are Very Proud to Present this Three Bedroom Semi Detached House Offered with No Upward Chain. The property is situated in the Holbrooks area of the city and within The President Kennedy School Catchment. The accommodation comprises of an entrance hall, lounge, dining area and kitchen diner. To the first floor there are three bedrooms and, separate toilet and bathroom. Externally there are gardens to the front side and rear with off road parking to the front and rear extensive garden. There is also a garage.

- Semi Detached
- No Upward Chain
- President Kennedy School Catchment
- Three Bedrooms
- Extensive Gardens
- Off Road Parking

Viewing

Please contact our Evans Estates Office on 02476333363 if you wish to arrange a viewing appointment for this property or require further information.



3



1

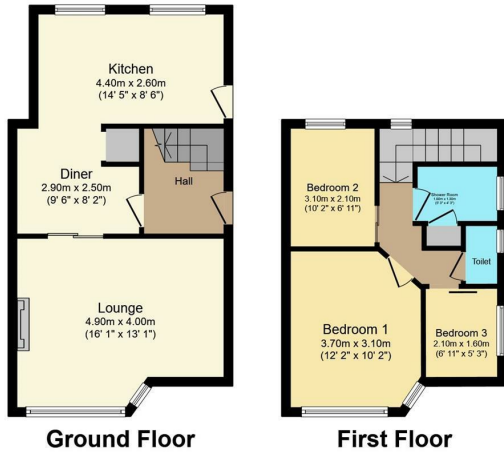


2



D

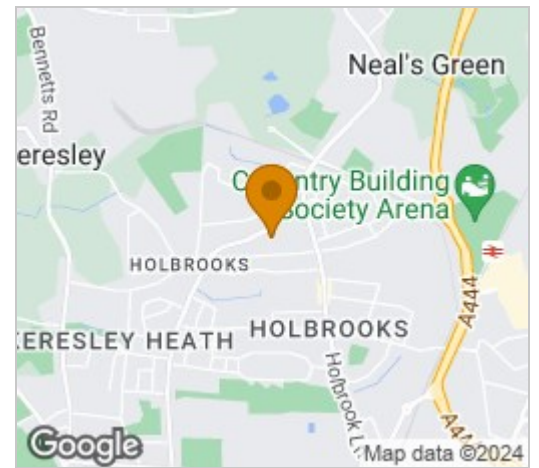
Floor Plan



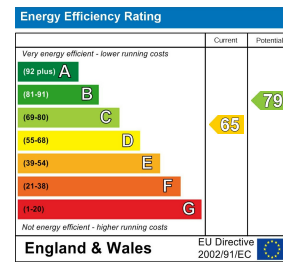
Total floor area 73.6 m² (792 sq.ft.) approx

This floor plan is for illustrative purposes only. It is not drawn to scale. Any measurements, floor areas (including any total floor area), openings and orientation are approximate. No details are guaranteed, they cannot be relied upon for any purpose and they do not form part of any agreement. No liability is taken for any error, omission or misstatement. A party must rely upon its own inspection(s).
Powered by www.focalagent.com

Area Map



Energy Efficiency Graph



These particulars, whilst believed to be accurate are set out as a general outline only for guidance and do not constitute any part of an offer or contract. Intending purchasers should not rely on them as statements of representation of fact, but must satisfy themselves by inspection or otherwise as to their accuracy. No person in this firm's employment has the authority to make or give any representation or warranty in respect of the property.

47 Headington Avenue, Coventry, West Midlands, CV6 2GX

Tel: 02476333363 Email: info@evans-estates.co.uk <https://www.evans-estates.co.uk>