

## Gregory Hood Road , Coventry, CV3 5AP Offers over £135,000

Evans Estates are Proud to Present this Two Bedroom First Floor Apartment Offered with No Upward Chain. The property has the benefits of double glazing and gas central heating (as specified) The property is situated in the Stivichall area of the city close to JLR. The accommodation comprises of an entrance hall, lounge and kitchen. There are two bedrooms and a bathroom. Externally there is a balcony and a communal garden.

- NO CHAIN
- TWO BEDROOM
- REFITTED KITCHEN
- REFITTED BATHROOM
- BALCONY

### Viewing

Please contact our Evans Estates Office on 02476333363 if you wish to arrange a viewing appointment for this property or require further information.



2



1

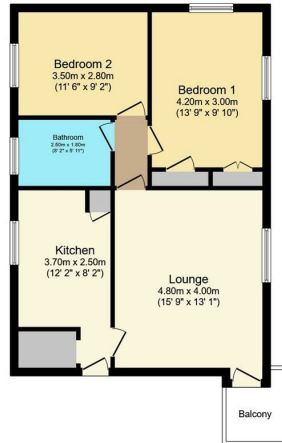


1



D

## Floor Plan



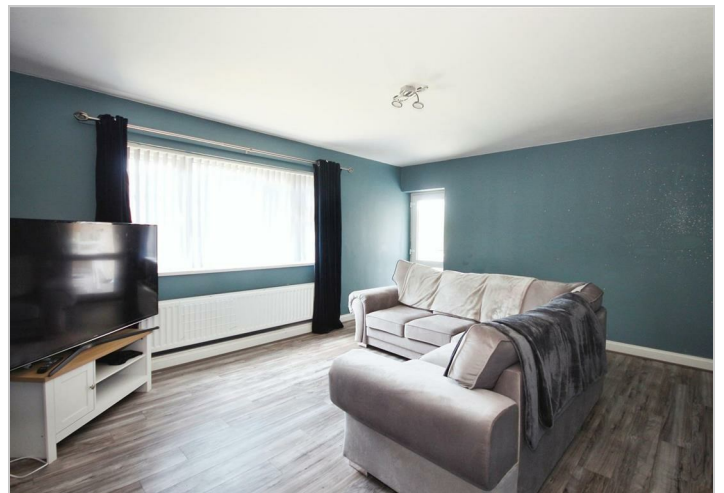
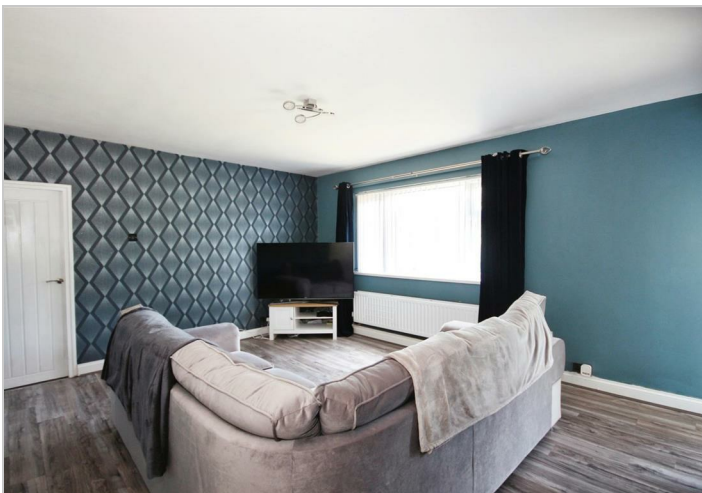
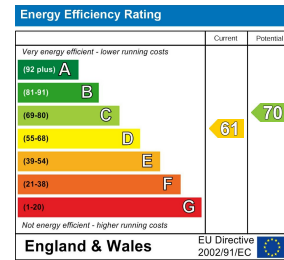
Total floor area 63.6 m<sup>2</sup> (685 sq.ft.) approx

This floor plan is for illustrative purposes only. It is not drawn to scale. Any measurements, floor areas (including any total floor area), openings and orientation are approximate. No details are guaranteed, they cannot be relied upon for any purpose and they do not form part of any agreement. No liability is taken for any error, omission or misstatement. A party must rely upon its own inspection(s).  
Powered by [www.focalagent.com](http://www.focalagent.com)

## Area Map



## Energy Efficiency Graph



These particulars, whilst believed to be accurate are set out as a general outline only for guidance and do not constitute any part of an offer or contract. Intending purchasers should not rely on them as statements of representation of fact, but must satisfy themselves by inspection or otherwise as to their accuracy. No person in this firm's employment has the authority to make or give any representation or warranty in respect of the property.

47 Headington Avenue, Coventry, West Midlands, CV6 2GX

Tel: 02476333363 Email: [info@evans-estates.co.uk](mailto:info@evans-estates.co.uk) <https://www.evans-estates.co.uk>