

Somers Road

Keresley End, Coventry, CV7 8LS

Offers over £190,000

Evans Estates are Very Proud to Present this Four Bedroom Semi Detached House Offered with No Upward Chain. The property is situated in Keresley End. The property has the benefits of double glazing and gas central heating (as specified). The accommodation comprises of an entrance hall, ground floor cloakroom, through lounge diner, refitted kitchen and utility room. To the first floor there are four bedrooms and family bathroom. Externally there is off road parking to the front and a rear an extensive rear garden.

- Four Bedroom Semi Detached House
- No Upward Chain
- Lounge and Refitted Kitchen
- Ground Floor Cloakroom
- Utility Room
- Rear Extensive Garden
- Off Road Parking

Viewing

Please contact our Evans Estates Office on 02476333363 if you wish to arrange a viewing appointment for this property or require further information.



4



2



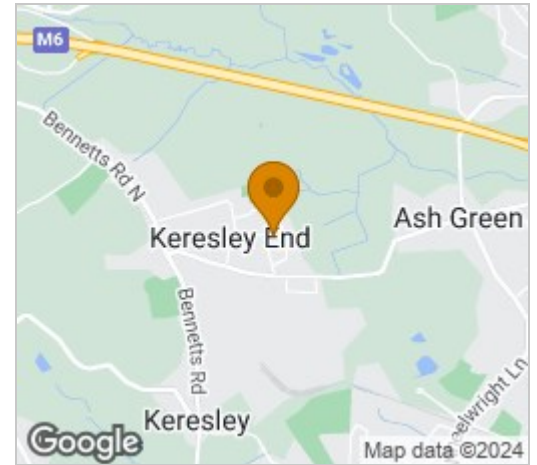
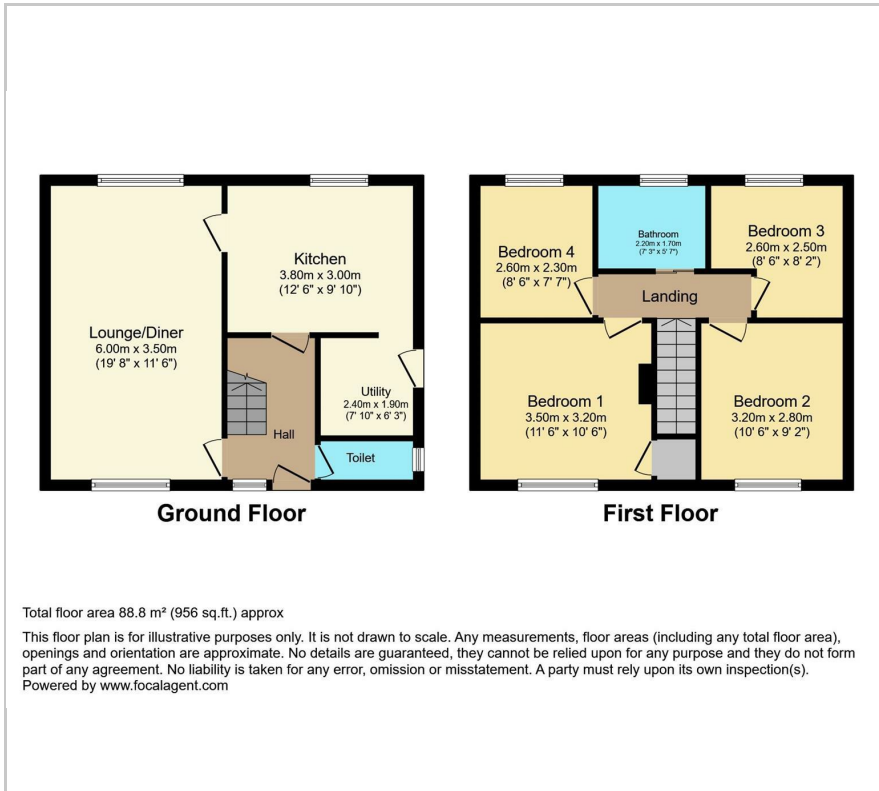
1



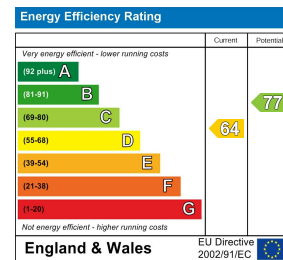
D

Floor Plan

Area Map



Energy Efficiency Graph



These particulars, whilst believed to be accurate are set out as a general outline only for guidance and do not constitute any part of an offer or contract. Intending purchasers should not rely on them as statements of representation of fact, but must satisfy themselves by inspection or otherwise as to their accuracy. No person in this firm's employment has the authority to make or give any representation or warranty in respect of the property.

47 Headington Avenue, Coventry, West Midlands, CV6 2GX

Tel: 02476333363 Email: info@evans-estates.co.uk <https://www.evans-estates.co.uk>