

## Kingsbury Road , Coventry, CV6 1PU Offers over £320,000

Evans Estates are Very Proud to Present This Stunning Extended Three Bedroom End of Terrace Family Home. The property is situated in the Coundon area of the city and is offered with no upward chain. The accommodation comprises of an entrance hall, lounge, extended refitted kitchen diner with built in Neff induction hob, Neff cooker, Neff microwave, fridge, freezer, washing machine and dishwasher. There is a utility room and a refitted ground floor shower room. To the first floor there are three bedrooms and a refitted family bathroom. Externally there is a rear landscaped garden with summer house/salon. To the front there is landscaped front garden.

- No Upward Chain
- Stunning Extended Family Home
- Extended Kitchen Diner
- Utility Room
- Refitted Ground Floor Shower Room
- Refitted Family Bathroom
- Rear Landscaped Garden

### Viewing

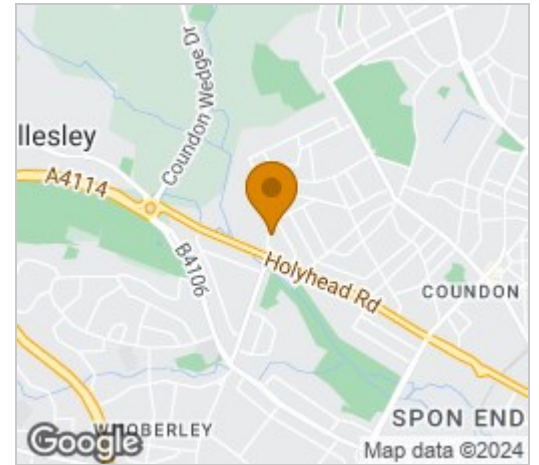
Please contact our Evans Estates Office on 02476333363 if you wish to arrange a viewing appointment for this property or require further information.



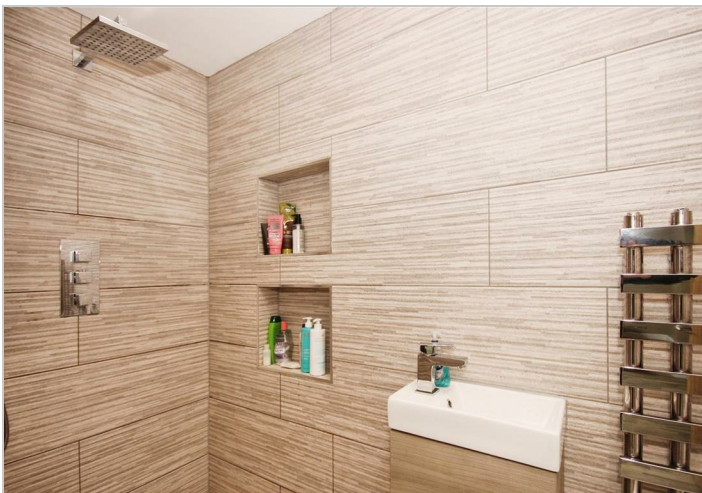
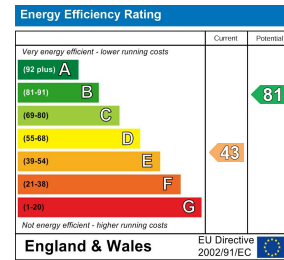
## Floor Plan



## Area Map



## Energy Efficiency Graph



These particulars, whilst believed to be accurate are set out as a general outline only for guidance and do not constitute any part of an offer or contract. Intending purchasers should not rely on them as statements of representation of fact, but must satisfy themselves by inspection or otherwise as to their accuracy. No person in this firm's employment has the authority to make or give any representation or warranty in respect of the property.

47 Headington Avenue, Coventry, West Midlands, CV6 2GX  
Tel: 02476333363 Email: [info@evans-estates.co.uk](mailto:info@evans-estates.co.uk) <https://www.evans-estates.co.uk>