



Swan Lane , Coventry, CV2 4GB Offers over £140,000

Evans Estates are Proud to Present this Two Bedroom Terrace House in Need of Modernisation. The property has the benefits of double glazing and is situated in the Stoke area of the city. The accommodation comprises of a lounge, dining room, kitchen and ground floor bathroom. To the first floor there are two bedrooms. Externally there are gardens to the front and rear.

- Two Up Two Down
- No Chain
- In Need Of Modernisation
- Close to City Centre

Viewing

Please contact our Evans Estates Office on 02476333363 if you wish to arrange a viewing appointment for this property or require further information.



2



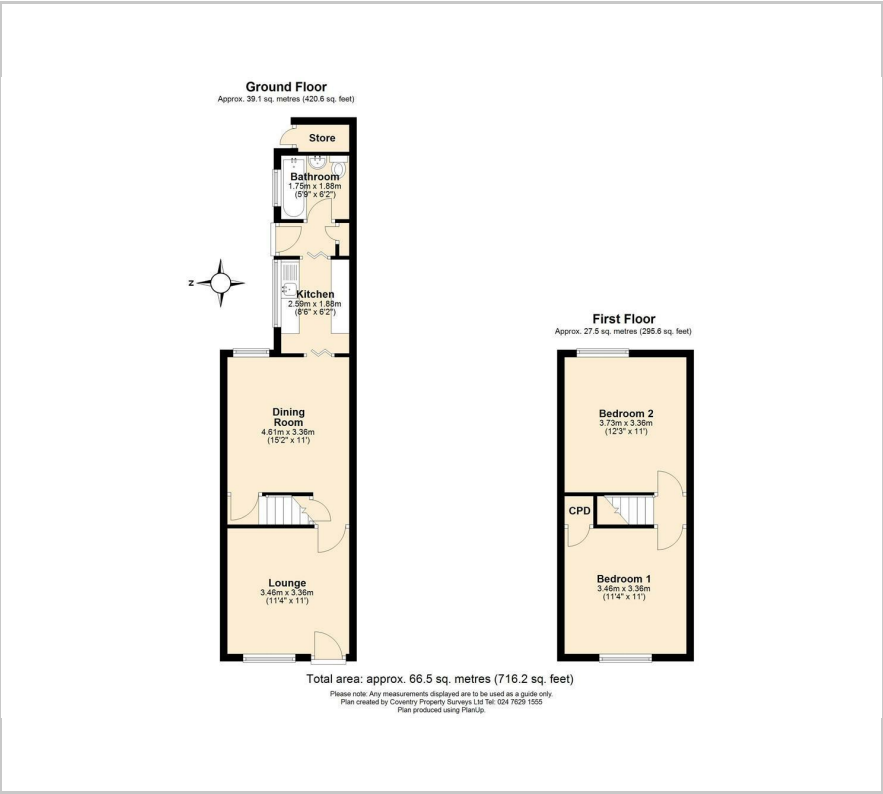
1



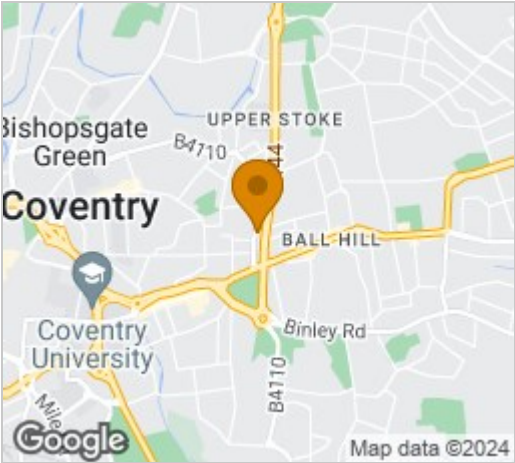
2



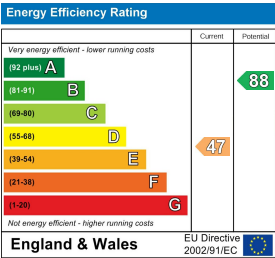
Floor Plan



Area Map



Energy Efficiency Graph



These particulars, whilst believed to be accurate are set out as a general outline only for guidance and do not constitute any part of an offer or contract. Intending purchasers should not rely on them as statements of representation of fact, but must satisfy themselves by inspection or otherwise as to their accuracy. No person in this firms employment has the authority to make or give any representation or warranty in respect of the property.

47 Headington Avenue, Coventry, West Midlands, CV6 2GX
Tel: 02476333363 Email: info@evans-estates.co.uk <https://www.evans-estates.co.uk>