

## Beake Avenue , Coventry, CV6 2HL Offers over £230,000

Evans Estates are Very Proud to Present This Three Bedroom End of Terrace House. The property has the benefits of double glazing and gas central heating (as specified). The property is situated in the Keresley area of the city and within The President Kennedy School Catchment. The accommodation comprises of an entrance hall, through lounge diner and kitchen. To the first floor there are three bedrooms and family bathroom. Externally there are gardens to the front and rear with off road parking to the front.

- Three Bedroom Family Home
- Through Lounge Diner
- Refitted Kitchen
- Off Road Parking
- President Kennedy School Catchment

### Viewing

Please contact our Evans Estates Office on 02476333363 if you wish to arrange a viewing appointment for this property or require further information.



3



1

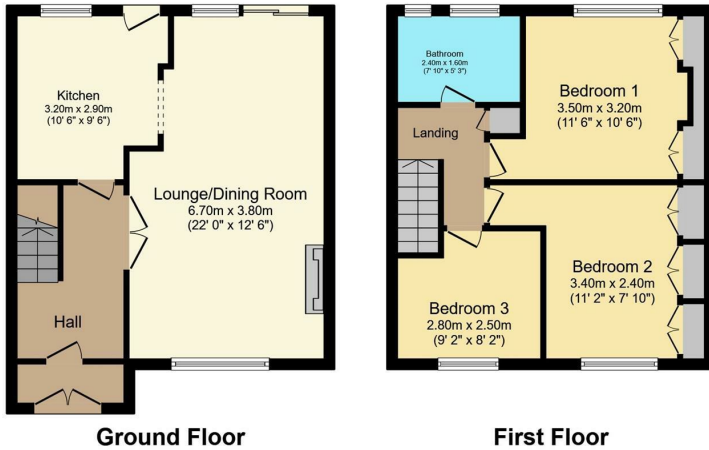


1



C

## Floor Plan



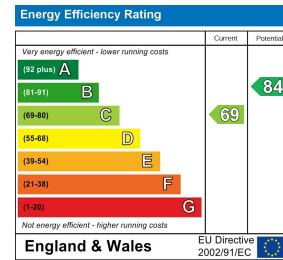
Total floor area 82.2 m<sup>2</sup> (885 sq.ft.) approx

This floor plan is for illustrative purposes only. It is not drawn to scale. Any measurements, floor areas (including any total floor area), openings and orientation are approximate. No details are guaranteed, they cannot be relied upon for any purpose and they do not form part of any agreement. No liability is taken for any error, omission or misstatement. A party must rely upon its own inspection(s).  
Powered by [www.focalagent.com](http://www.focalagent.com)

## Area Map



## Energy Efficiency Graph



These particulars, whilst believed to be accurate are set out as a general outline only for guidance and do not constitute any part of an offer or contract. Intending purchasers should not rely on them as statements of representation of fact, but must satisfy themselves by inspection or otherwise as to their accuracy. No person in this firm's employment has the authority to make or give any representation or warranty in respect of the property.

47 Headington Avenue, Coventry, West Midlands, CV6 2GX

Tel: 02476333363 Email: [info@evans-estates.co.uk](mailto:info@evans-estates.co.uk) <https://www.evans-estates.co.uk>