

Butt Lane

Allesley, Coventry, CV5 9EU

Offers over £435,000

Evans Estates are Very Proud to Present this Stunning Extended Detached Two Bedroom Bungalow. The property is situated in the Semi Rural Lane in Allesley. The property has the benefits of double glazing and gas central heating (as specified) The accommodation comprises of an entrance hall, lounge, dining room and a refitted kitchen diner. There are two refitted shower room, two double bedroom and utility room/gym. Externally there is a rear landscaped garden, there is off road parking with direct access to a garage.

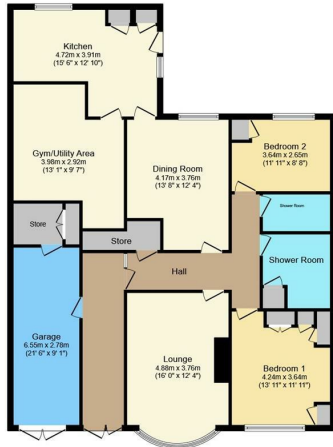
- Two Bedroom Detached Bungalow
- Two Refitted Shower Room
- Rear Landscaped Garden
- Refitted Kitchen Diner
- Utility/ Gym Room
- Off Road Parking

Viewing

Please contact our Evans Estates Office on 02476333363 if you wish to arrange a viewing appointment for this property or require further information.



Floor Plan



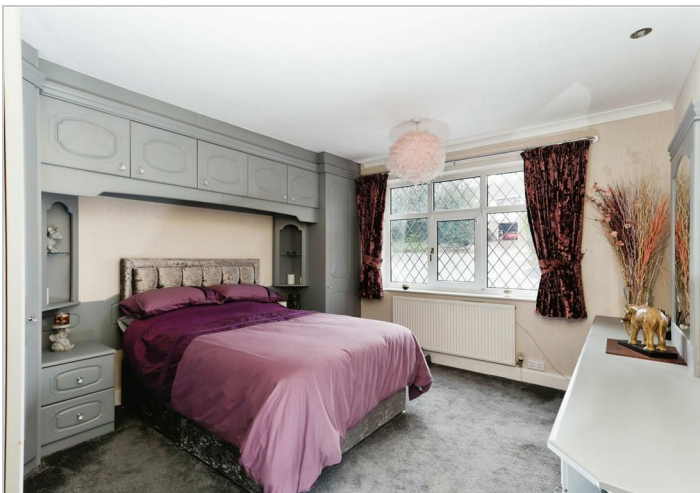
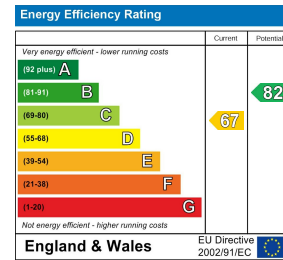
Total floor area 154.5 m² (1,663 sq.ft.) approx

This floor plan is for illustrative purposes only. It is not drawn to scale. Any measurements, floor areas (including any total floor area), openings and orientation are approximate. No details are guaranteed, they cannot be relied upon for any purpose and they do not form part of any agreement. No liability is taken for any error, omission or misstatement. A party must rely upon its own inspection(s).
Powered by www.focalagent.com

Area Map



Energy Efficiency Graph



These particulars, whilst believed to be accurate are set out as a general outline only for guidance and do not constitute any part of an offer or contract. Intending purchasers should not rely on them as statements of representation of fact, but must satisfy themselves by inspection or otherwise as to their accuracy. No person in this firm's employment has the authority to make or give any representation or warranty in respect of the property.

47 Headington Avenue, Coventry, West Midlands, CV6 2GX

Tel: 02476333363 Email: info@evans-estates.co.uk <https://www.evans-estates.co.uk>