



## Halford Lane , Coventry, CV6 2HG Offers over £290,000

Evans Estates are Very Proud to Present this Three Bedroom Semi Detached Family Home Situated in The Keresley are of the City. The property has the benefits of double glazing and gas central heating (as specified). The accommodation comprises of an entrance hall, lounge, dining room, refitted kitchen and utility room. To the first floor there are three bedrooms and refitted family bathroom. There is also a boarded loft space. Externally there is off road parking to the front with direct access to a garage. To the rear there is a mature garden.

- Semi Detached Family Home
- Three Bedrooms
- Off Road Parking
- Refitted Family Bathroom
- Lounge and Dining Room
- Utility Room and Kitchen

### Viewing

Please contact our Evans Estates Office on 02476333363 if you wish to arrange a viewing appointment for this property or require further information.



3



1

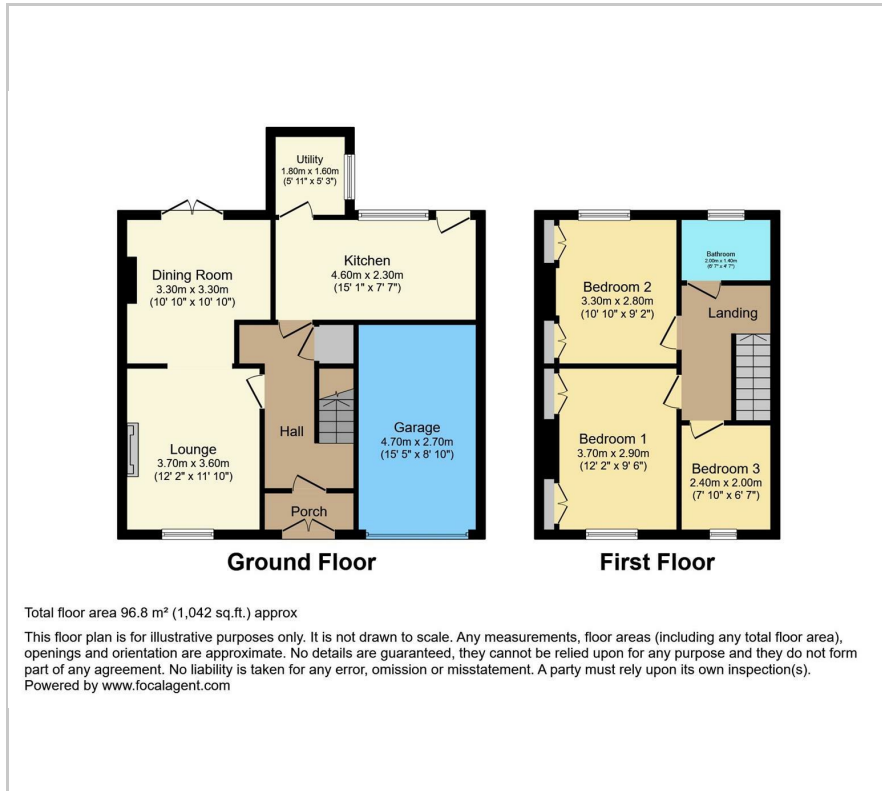


2

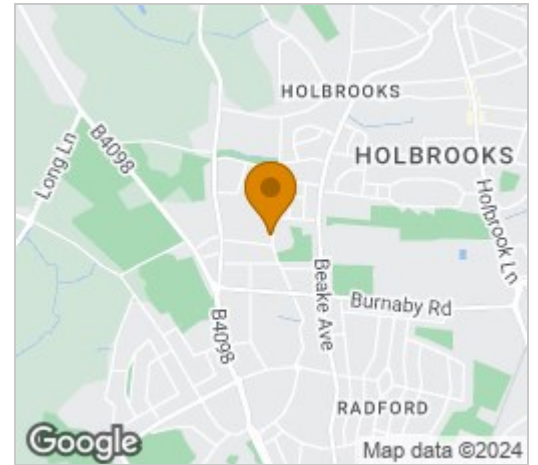


E

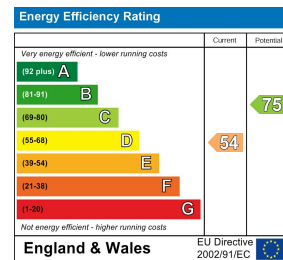
## Floor Plan



## Area Map



## Energy Efficiency Graph



These particulars, whilst believed to be accurate are set out as a general outline only for guidance and do not constitute any part of an offer or contract. Intending purchasers should not rely on them as statements of representation of fact, but must satisfy themselves by inspection or otherwise as to their accuracy. No person in this firm's employment has the authority to make or give any representation or warranty in respect of the property.

47 Headington Avenue, Coventry, West Midlands, CV6 2GX  
Tel: 02476333363 Email: info@evans-estates.co.uk <https://www.evans-estates.co.uk>