



Keresley Close , Coventry, CV6 2GA Offers over £195,000

Evans Estates are Very Proud to Present this well presented End of Terrace Family Home and is Offered With No Upward Chain. The property is situated in the Keresley area of the city in a Cul De Sac location. The property has the benefits of gas central heating (as specified) The accommodation comprises of an entrance hall, lounge, refitted kitchen, dining area, downstairs shower room and a utility room. To the first floor there are three bedrooms and a family bathroom. Externally there are gardens to the front and rear. Call the team to arrange a viewing!

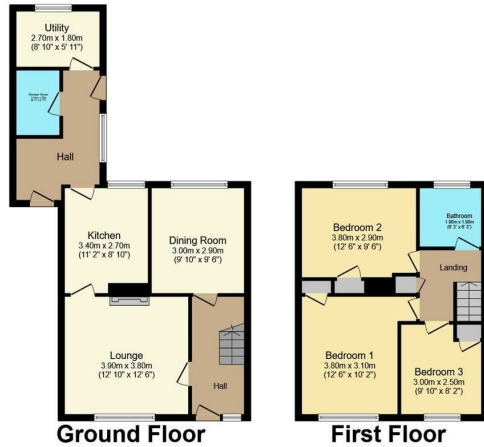
- End of Terrace
- No Chain
- Three Bedrooms
- Two Reception Rooms
- Refitted Kitchen
- Utility Room

Viewing

Please contact our Evans Estates Office on 02476333363 if you wish to arrange a viewing appointment for this property or require further information.



Floor Plan



Ground Floor

First Floor

Total floor area 100.7 m² (1,084 sq.ft.) approx

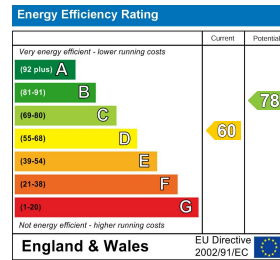
This floor plan is for illustrative purposes only. It is not drawn to scale. Any measurements, floor areas (including any total floor area), openings and orientation are approximate. No details are guaranteed, they cannot be relied upon for any purpose and they do not form part of any agreement. No liability is taken for any error, omission or misstatement. A party must rely upon its own inspection(s).

Powered by www.focalagent.com

Area Map



Energy Efficiency Graph



These particulars, whilst believed to be accurate are set out as a general outline only for guidance and do not constitute any part of an offer or contract. Intending purchasers should not rely on them as statements of representation of fact, but must satisfy themselves by inspection or otherwise as to their accuracy. No person in this firm's employment has the authority to make or give any representation or warranty in respect of the property.

47 Headington Avenue, Coventry, West Midlands, CV6 2GX

Tel: 02476333363 Email: info@evans-estates.co.uk <https://www.evans-estates.co.uk>