

Alderney Close , Coventry, CV6 4FG Offers over £175,000

Evans Estates are Proud to Present this Two Bedroom Terraced House Offered with No Upward Chain. The property has the benefits of double glazing and gas central heating (as specified). The accommodation comprises of an entrance hall, kitchen and lounge. To the first floor there are two bedrooms and a bathroom. Externally there is a rear garden and and two allocated parking spaces.

- No Upward Chain
- Two Bedrooms
- Lounge and Kitchen
- Two Allocated Parking Spaces

Viewing

Please contact our Evans Estates Office on 02476333363 if you wish to arrange a viewing appointment for this property or require further information.



2



1

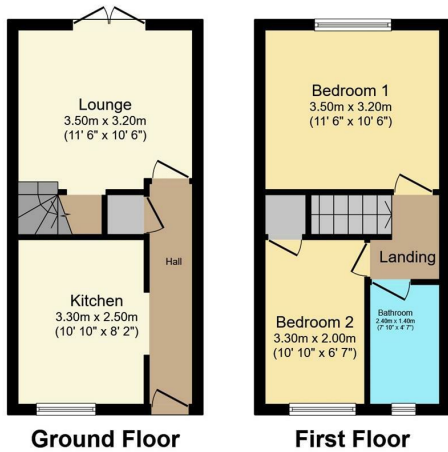


1



D

Floor Plan



Total floor area 52.5 sq.m. (565 sq.ft.) approx

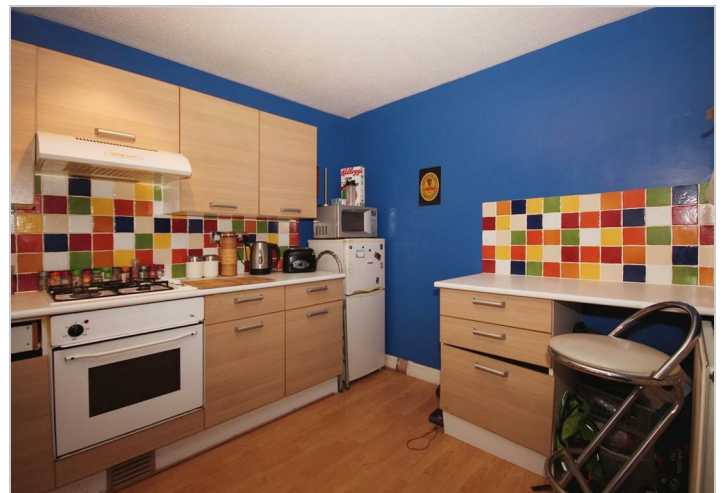
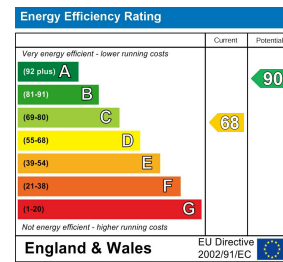
This floor plan is for illustrative purposes only. It is not drawn to scale. Any measurements, floor areas (including any total floor area), openings and orientation are approximate. No details are guaranteed, they cannot be relied upon for any purpose and they do not form part of any agreement. No liability is taken for any error, omission or misstatement. A party must rely upon its own inspection(s).

Powered by www.focalagent.com

Area Map



Energy Efficiency Graph



These particulars, whilst believed to be accurate are set out as a general outline only for guidance and do not constitute any part of an offer or contract. Intending purchasers should not rely on them as statements of representation of fact, but must satisfy themselves by inspection or otherwise as to their accuracy. No person in this firm's employment has the authority to make or give any representation or warranty in respect of the property.

47 Headington Avenue, Coventry, West Midlands, CV6 2GX

Tel: 02476333363 Email: info@evans-estates.co.uk <https://www.evans-estates.co.uk>