

FREEHOLD



House - Semi-Detached

# 6 GROVE GARDENS, LONDON, NW4 4SA

Asking Price

## £600,000

FEATURES



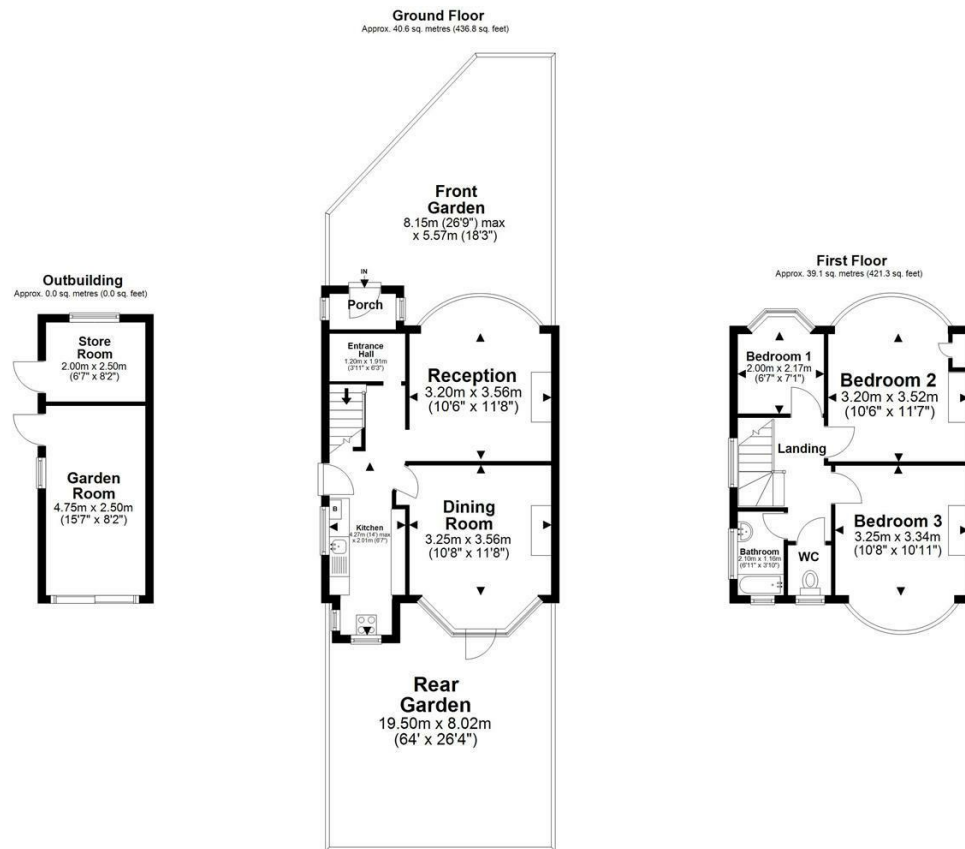
# 3 Bedroom House - Semi-Detached located in London

Spacious 3-Bedroom Semi-Detached Home with Excellent Potential – Grove Gardens, London

Located in the desirable Grove Gardens area, this three-bedroom semi-detached house offers a fantastic opportunity for families and investors alike. With generously sized rooms and a well-balanced layout, the property provides a solid foundation for creating a comfortable and stylish home.

Ideally situated for commuters, the property is within easy reach of Hendon Station, offering fast and reliable transport links into Central London. Excellent road connectivity also ensures convenient access to surrounding areas and major routes.

While the home requires modernisation, it presents a rare chance to add value and tailor the interiors to your own tastes. Whether you're looking to create a forever family home or a rewarding investment, the scope for transformation is considerable.



Total area: approx. 79.7 sq. metres (858.1 sq. feet)

All images used are for illustrative purposes only. Floor plan are intended to give a general indication of proposed layout only. All images and dimensions do not form of any contract or warranty. For the exclusive use of Maxwell Estate Agents Plan produced using PlanItUp

Grove Gardens, London, NW4 4SA

Call us on

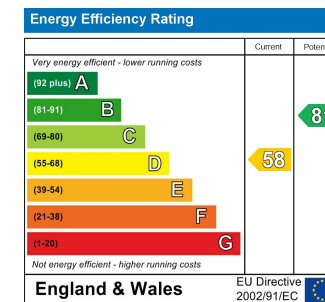
0208 952 0808

[info@maxwellestates.co.uk](mailto:info@maxwellestates.co.uk)

[www.maxwellestates.co.uk](http://www.maxwellestates.co.uk)

Council Tax Band

E



Agents Note: Whilst every care has been taken to prepare these particulars, they are for guidance purposes only. All measurements are approximate and are for general guidance purposes only and whilst every care has been taken to ensure their accuracy, they should not be relied upon and potential buyers are advised to recheck the measurements.

