

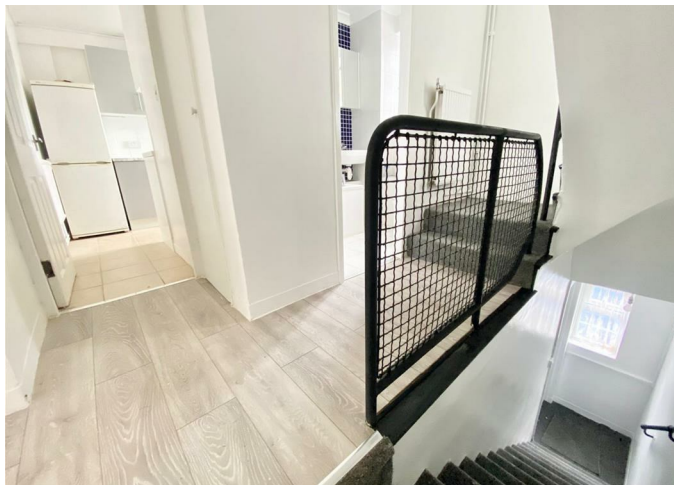
Maisonette

SHEAVESHILL COURT, THE HYDE LONDON, NW9 6BP

Per Calendar Month

£2,100 Per

FEATURES



4 Bedroom Maisonette located in London

Maxwell Estates are pleased to offer this spacious 4 bedroom duplex maisonette.


Located in Colindale, this property is within walking distance to Colindale Underground Station (Northern Line) and all essential amenities, including a variety of local shops, restaurants, and cafes along the vibrant high street.

Just moments away is Bang Bang Oriental Food Hall, offering a wide array of international cuisines, as well as a large Morrisons supermarket for convenient grocery shopping. The property includes access to private residential parking where a permit is required.

This well-proportioned maisonette features one reception room, a separate kitchen, four bedrooms, and a family bathroom. The property also benefits from excellent transport links.

Call us on
0208 952 0808
info@maxwellestates.co.uk
www.maxwellestates.co.uk

Council Tax Band
C

Energy Efficiency Rating		
	Current	Potential
Very energy efficient - lower running costs		
(92 plus) A		
(81-91) B		
(69-80) C		
(55-68) D		
(39-54) E		
(21-38) F		
(1-20) G		
Not energy efficient - higher running costs		
England & Wales		EU Directive 2002/91/EC 

Agents Note: Whilst every care has been taken to prepare these particulars, they are for guidance purposes only. All measurements are approximate and are for general guidance purposes only and whilst every care has been taken to ensure their accuracy, they should not be relied upon and potential buyers are advised to recheck the measurements.

