

FREEHOLD



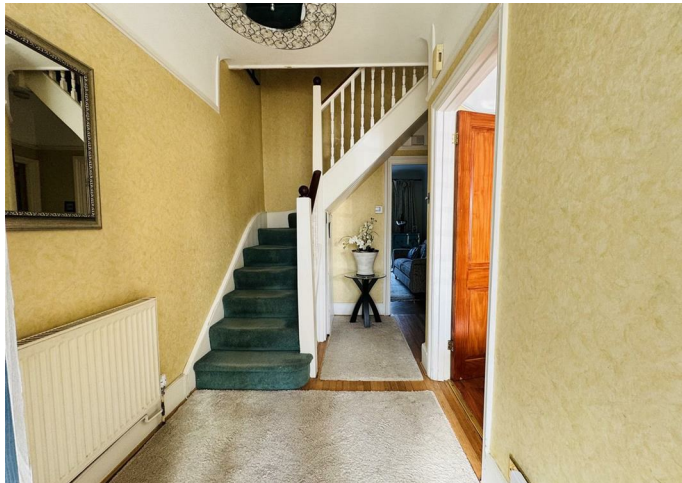
House - Semi-Detached

HEMING ROAD, EDGWARE HA8 9AB

Asking Price

£600,000

FEATURES



4 Bedroom House - Semi-Detached located in Edgware

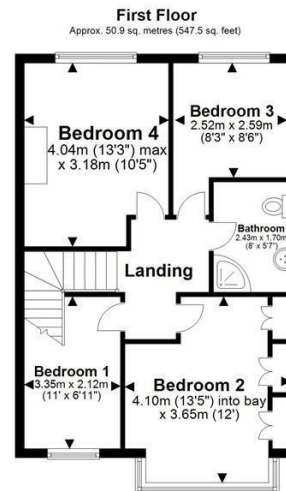
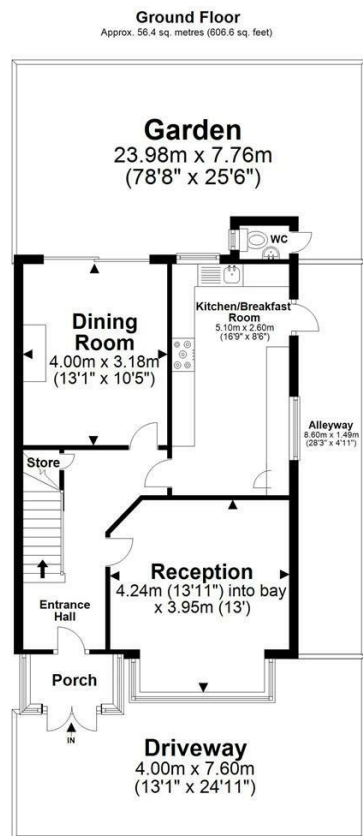
Spacious 4-Bedroom Semi-Detached Home in Sought-After Edgware (HA8), Located on the desirable Heming Road, Edgware (HA8), this generously sized 4-bedroom semi-detached home offers an excellent opportunity for families seeking space, comfort, and convenience.

Key Features:

Four Well-Proportioned Bedrooms – Ideal for growing families or those needing extra space for home offices.

Large Private Garden – A fantastic outdoor space perfect for relaxation, entertaining, or potential extensions (STPP).

Spacious Interiors – A well-designed layout with ample living and dining areas.



Total area: approx. 107.2 sq. metres (1154.2 sq. feet)

All images used are for illustrative purposes only. Floor plans are intended to give a general indication of the proposed layout only. All images and dimensions do not form part of any contract or warranty. For the exclusive use of Maxwell Estate Agent
Plans produced using FloorUp

Heming Road, Edgware, HA8 9AB

Call us on

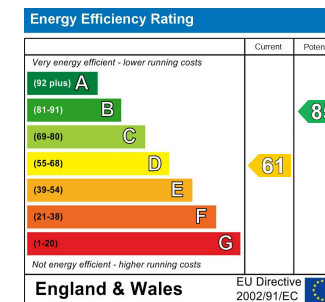
0208 952 0808

info@maxwellestates.co.uk

www.maxwellestates.co.uk

Council Tax Band

E



Agents Note: Whilst every care has been taken to prepare these particulars, they are for guidance purposes only. All measurements are approximate and are for general guidance purposes only and whilst every care has been taken to ensure their accuracy, they should not be relied upon and potential buyers are advised to recheck the measurements.

