

LEASEHOLD



Apartment

5 RUFFORTHCOURT,
PAGEANT AVENUE,
LONDON, NW9 5LZ

£255,000

FEATURES



1 Bedroom Apartment located in London

Welcome to this charming apartment located on quiet estate of Pageant Avenue! This delightful property boasts a spacious reception room with an open plan kitchen and access to a balcony. With one double bedroom, you'll have a comfortable retreat to unwind after a long day.

The apartment spanning 476 square feet offers a compact yet functional living space, ideal for individuals or couples looking for a cosy London abode.

Situated in a prime location, this apartment provides easy access to all the amenities and local tube stations making commuting very convenient.

Don't miss out on the opportunity to make this apartment your new home sweet home. Contact us today to arrange a viewing and experience the charm of Pageant Avenue for yourself!

Call us on

0208 952 0808

info@maxwellestates.co.uk

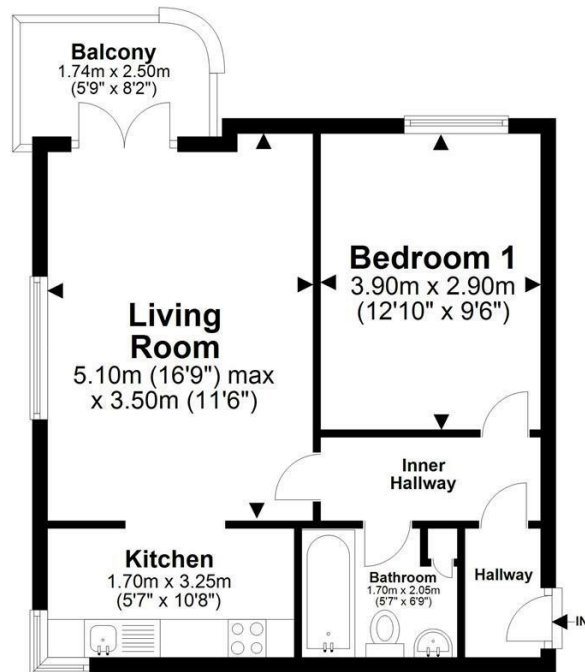
www.maxwellestates.co.uk

Council Tax Band

C

First Floor Flat

Approx. 44.2 sq. metres (476.1 sq. feet)



Total area: approx. 44.2 sq. metres (476.1 sq. feet)

All images used are for illustrative purposes only. Floor plans are intended to give a general indication of the proposed layout only. All images and dimensions are not intended to form part any contract or warranty
Plan produced using PlanUp.

Rufforth Court, 61 Pageant Avenue, London NW9 5LZ

Energy Efficiency Rating		
	Current	Potential
<i>Very energy efficient - lower running costs</i>		
(92 plus) A		
(81-91) B		
(69-80) C		
(55-68) D		
(39-54) E		
(21-38) F		
(1-20) G		
<i>Not energy efficient - higher running costs</i>		
England & Wales	EU Directive 2002/91/EC	

Agents Note: Whilst every care has been taken to prepare these particulars, they are for guidance purposes only. All measurements are approximate and are for general guidance purposes only and whilst every care has been taken to ensure their accuracy, they should not be relied upon and potential buyers are advised to recheck the measurements.

