

LEASEHOLD



Apartment

FLAT 10, 63,  
LINDHOLME COURT  
PAGEANT AVENUE,  
LONDON, NW9 5LZ

£275,000

FEATURES



# 1 Bedroom Apartment located in London

Call us on

0208 952 0808

[info@maxwellestates.co.uk](mailto:info@maxwellestates.co.uk)

[www.maxwellestates.co.uk](http://www.maxwellestates.co.uk)

Welcome to this charming apartment located on Pageant Avenue in London! This delightful property boasts a cosy reception room, perfect for relaxing or entertaining guests with access through to a balcony. With one bedroom, this apartment offers a comfortable living space ideal for individuals or couples looking for a stylish city dwelling.

The apartment features a bathroom, double glazed windows, engineered wood flooring, open plan living with a good sized kitchen. Built in 1997, this property combines modern amenities with a touch of character, offering a unique living experience in the heart of London.

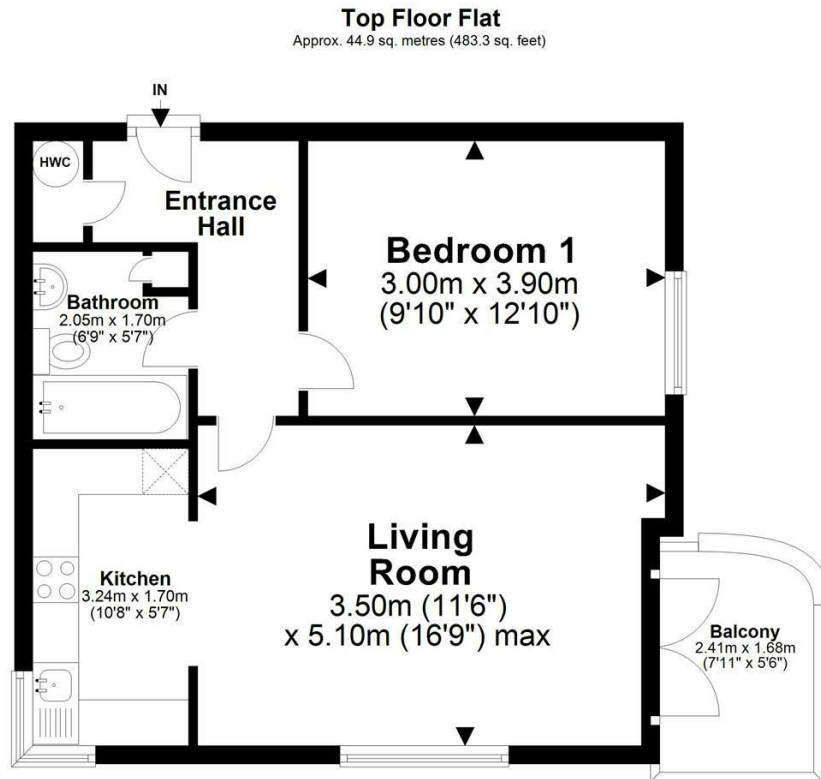
Spanning 549 square feet, this apartment provides a good balance of space for both living and storage needs. Whether you are a first-time buyer, a young professional this property would be a great fit for you.

Refurbished a few years ago and well maintained.

Don't miss out on the chance to make this apartment your own. Contact us today to arrange a viewing and take the first step towards owning this lovely property on Pageant Avenue!

Council Tax Band

C



Total area: approx. 44.9 sq. metres (483.3 sq. feet)

All images used are for illustrative purposes only. Floor plans are intended to give a general indication of the proposed layout only. All images and dimensions are not intended to form part any contract or warranty.  
Plan produced using PlanUp.

Lindholme Court, 63 Pageant Avenue, London NW9 5LZ

Energy Efficiency Rating		Current	Potential
<i>Very energy efficient - lower running costs</i>			
(92 plus)	A		
(81-91)	B		
(69-80)	C	70	76
(55-68)	D		
(39-54)	E		
(21-38)	F		
(1-20)	G		
<i>Not energy efficient - higher running costs</i>			
<b>England &amp; Wales</b>		EU Directive 2002/91/EC	

Agents Note: Whilst every care has been taken to prepare these particulars, they are for guidance purposes only. All measurements are approximate and are for general guidance purposes only and whilst every care has been taken to ensure their accuracy, they should not be relied upon and potential buyers are advised to recheck the measurements.

