

FREEHOLD



House - Semi-Detached

21 SHALDON ROAD,
EDGWARE, HA8 6AL

Guide Price

£535,000

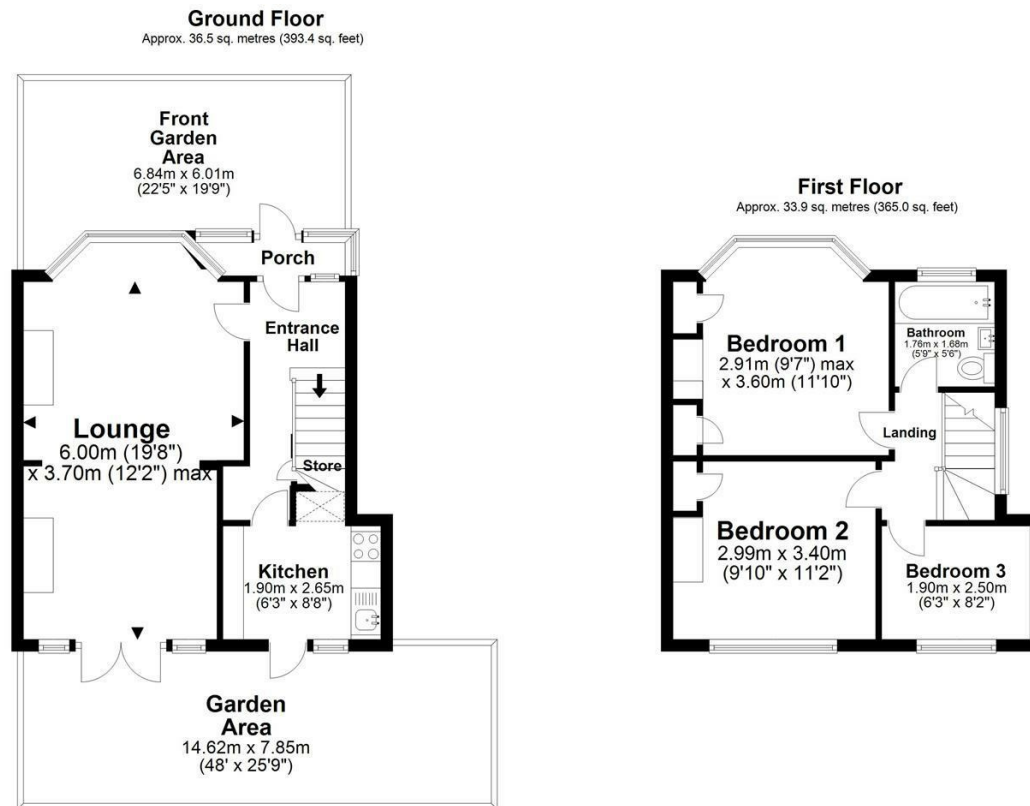
FEATURES



3 Bedroom House - Semi-Detached located in Edgware

Exclusively with Maxwell Estates this 3 bedrooms semi-detached house located close to Canons Park High School. This spacious property has a good sized through lounge and kitchen, along with 2 large double beds with a box room and family bathroom, good sized garden with garage and a large front garden with the potential to make a drive for 2 cars. The property is located in a desirable area close to a few good schools. In need to modernisation.

Call us now to arrange a viewing.



Total area: approx. 70.5 sq. metres (758.4 sq. feet)

All images used are for illustrative purposes only. Floor plans are intended to give a general indication of the proposed layout only. All images and dimensions are not intended to form part of any contract or warranty. Plan produced using PlanUp.

Shaldon Road, Edgware, HA8 6AL

Call us on

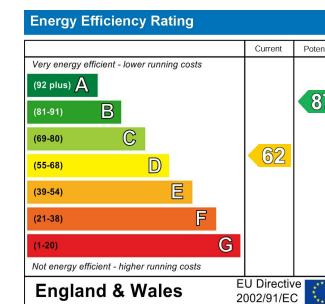
0208 952 0808

info@maxwellestates.co.uk

www.maxwellestates.co.uk

Council Tax Band

D



Agents Note: Whilst every care has been taken to prepare these particulars, they are for guidance purposes only. All measurements are approximate and are for general guidance purposes only and whilst every care has been taken to ensure their accuracy, they should not be relied upon and potential buyers are advised to recheck the measurements.

